

107 035

Issue Date June 1991

STARTER SWITCHES

155/200 155/500

~~155/501~~ 155/800

155/801

Identifications

Applications

The starter switch is a device which triggers an electrical pulse to start a fluorescent tube.

It also preheats the cathodes prior to starting, thus, extending lamp life.

The specific physical characteristics of a GE Thorn starter switch ensures high quality, reliability and safety in appearance and operation.

Description

GE Thorn starter switches consist of a glow bottle and capacitor housed within a polycarbonate canister.

A high temperature grade of polycarbonate plastic is used for the outer protective canister. The plastic is tough, virtually unbreakable, and ultra violet stable. (i.e. the plastic will not degrade if exposed to U.V.)

GE Thorn canisters are colour coded for convenience.

Physical Characteristics

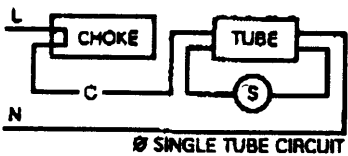
Dimensions

Dimensions in mm (Glowstarter switch)

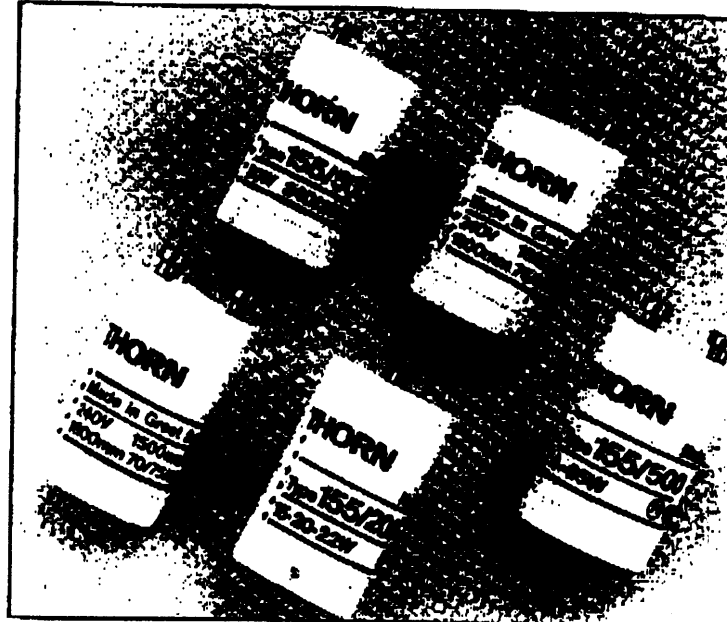
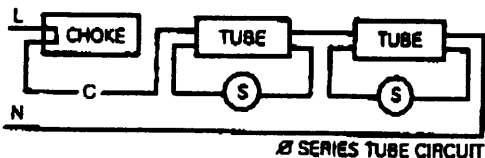
	A	B	D	E	H	L	S	T
Max	12.9	21.5	5.0	3.2	36.0	4.3	—	2.2
Min	12.5	—	4.7	2.8	33.0	—	1.7	1.9

The weight of a starter switch is 7gms.

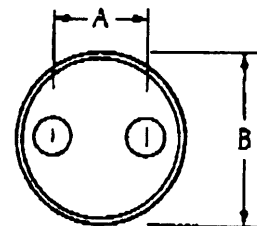
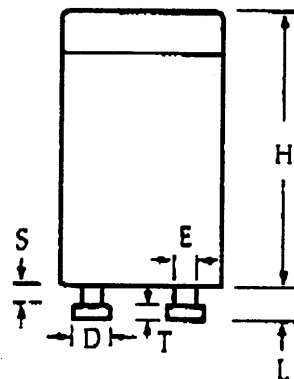
Circuit Diagram



- L — Line
- N — Neutral
- S — Starter
- C — Leading Circuit Capacitor



Now All GE Branded



No. of pages: 2 Date: 2/90
 Company: GE Lighting Co. Ltd. No. 0202774460
 From: SIMON SMITH
 Company: GE Lighting Co. Ltd. Fax No: 0115 2794499
 Monday fax notes
 P. 01/02 TO 901132794449



GE Thorn

The Starter Range

155/200. Mainly low wattage series tube operation and single lamp operation of those same tubes with 120v supplies. (See tables).

155/500. A universal switch for single tube operation of low and medium wattages. (See tables).

155/501. Specifically for T8 50W. *N/A*

155/800. Higher wattages. Specifically 75/85, 80, 100 and 125W.

155/801. Higher wattages. Specifically 70, 75/85, 80 and 100W.

Starter Switches For External Use

Lower Ambient Temp.

Market Area	Supply System	Circuit Type	600mm 18w	1200mm 38w	1500mm 58w	1800mm 70w
Below 0°C UK (240v) -15 to 0°C	Unearthed & Earthed	Lagging	155/500	155/801	155/801	155/801
		Leading	155/500	155/800	155/800	—

Above 0°C UK (240v)	Unearthed & Earthed	Lagging	155/500	155/500	155/500	155/801
	Unearthed & Earthed	Leading	155/500	—	—	155/801

Any Temp Down to -10°C	EUR (220v)	Unearthed & Earthed	Lagging	155/500	155/500	155/500	155/801 See (A)
------------------------	------------	---------------------	---------	---------	---------	---------	-----------------

(A) 1800mm lamp circuits will only work reliably on 220v supplies if a 220/240 step up transformer is used.

Starter Switches For Fluorescent Tubes at 25°C

LINEAR TUBES

Tube	Wattage	Starter Switch	Circuit
T5 6"	4W	155/200	Twin/Single
T5 9"	6W	155/200	Twin/Single
T5 12"	8W	155/200	Twin/Single
T5 21"	13W	155/500	Single
T8 18"	15W	155/200	Twin/Single
T8 2'	18W	155/200	Twin/Single
T8 3'	30W	155/500	Single
T8 4'	36W	155/500	Single
T8 1m	36W	155/500	Single
T8 1050mm	38W	155/500	Single
T8 5'	58W	155/500	Single
T8 5'	50W	155/501	Single
T8 6'	70W	155/801	Single
T12 2'	20W	155/200	Twin/Single
T12 2'	40W	155/500	Single
T12 3'	30W	155/500	Single
T12 4'	40W	155/500	Single
T12 5'	65W	155/500	Single
T12 6'	65/80W	155/800-155/801	Single
T12 8'	100W	155/800	Single
T12 8'	85/125W	155/800	Single

2D TUBES

- 10W 4 pin only: 155/500
- 16W 4 pin only: 155/500
- 21W 4 pin only: 155/500
- 28W 4 pin only: 155/500
- 38W 4 pin only: 155/500

'U' TUBES

- 20W : Series pair operation 155/200 - Single 155/500
- 40W : 155/500

2L TUBES

- 18W : 155/200 Twin/Single
- 24W : 155/500 Single
- 36W : 155/500 Single

GE Thorn Starter Switch

Catalogue Number

- 155/200 (1) 120v Supply & Series tube (twin) operation of 4, 6, 8, 15, 18, 20W.
- (2) 220v/240v Supply & Single Lamp operation of 15, 18, 20W.

- 155/500 4, 6, 8, 13, 24, 28, 30, 32, 36, 38, 40, 58, 65W
- 155/501 50W
- 155/800 75/85, 80, 100, 125W
- 155/801 70, 75/85, 80, 100W

Plastic Canisters

GE Thorn Canisters meet the physical marking, resistance to heat and flammability tests of EN60-155. They are:-

Torsion Test	PASS
Tumbling Barrel	PASS
Legibility of Marking	PASS
Ball Pressure	PASS
Dialectric Test	PASS

GE Thorn Canisters are colour coded for convenience.

Colour of Starter Print Ink

Red Print	— 155/200
Black Print	— 155/500
Black Print	— 155/501
Blue Print	— 155/800
Green Print	— 155/801

Starter Switch Safety Standards Table

		STARTER SWITCHES				
		Safety & Performance		Safety Standards only		
UK	— BS	155/200 EN60-155	155/500 EN60-155	155/501 EN60-155	155/800 EN60-155	155/801 EN60-155
Norway	— NEMKO	*	*	*	*	*
Sweden	— SEMKO	*	*	*	*	*
Finland	— FI	*	*	*	*	*
Denmark	— DEMKO	*	*	*	*	*
Germany	— VDE	*	*	*	*	*
Italy	— IMQ	*	*	*	*	*

KEY TO TABLE
EN60 This is a British and European Safety Standard
* — EN60-155 Applies
FI — Finnish Inspectorate

GE Thorn Lamps Limited reserve the right to alter specification without prior notice or public announcement.

GE Thorn Lamps Limited is affiliated with General Electric Company USA and is not connected with the English Company of a similar name.