

iQ Motor

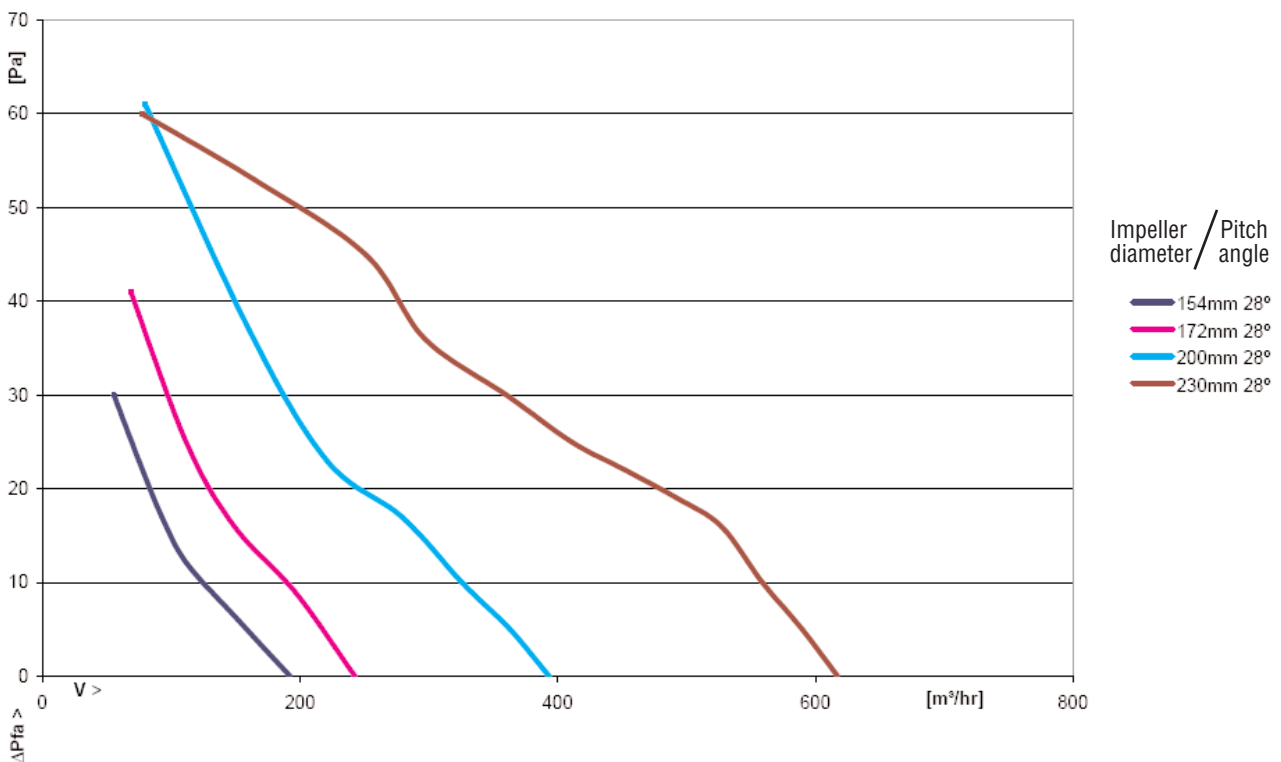


| | |
|-----------------------------------|--|
| Material: | Die-cast aluminium housing |
| Conveying direction: | “V” and “A” (depending on axial impeller used) |
| Direction of rotation: | Anticlockwise, viewing the shaft end |
| System of protection: | IP54 |
| Insulation class: | “F” |
| Mounting position: | “Any” |
| Mode of operation: | Continuous operation (S1) |
| Bearings: | Maintenance-free ball bearings |
| Motor protection: | Protected by electronics |
| Electrical connection: | Mains cable |
| Protection class: | I (II possible) |
| Approvals: | VDE and UL in progress |
| Mounting attachment parts: | Guard grille and wall ring are attached to the projecting thread ends on the A side |
| Axial impeller attachment: | A plastic adapter with catching peg and M4 screw are used to secure the impeller on the motor shaft. |

| Nominal data | Max output power | FNominal voltage | Frequency | Speed | Temperature range | Weight |
|--------------|------------------|------------------|-----------|-------|-------------------|--------|
| Type | W | V | Hz | 1/min | °C | kg |
| iQ3612 | 10 | 230 | 50/60 | 1300 | -40 - +50 | 0.6 |

subject to alterations

Air performance curves



iQ Motor

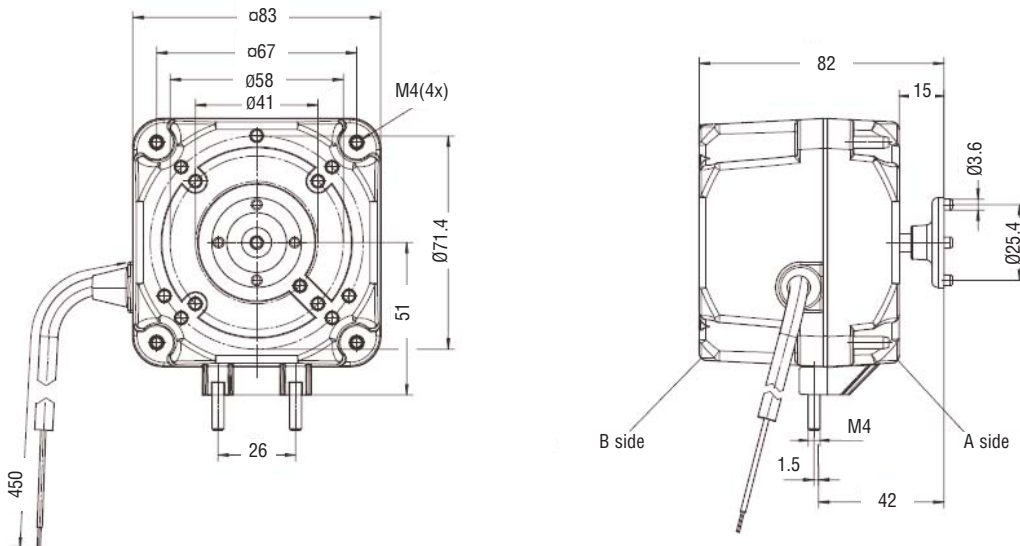
A one size fits all approach.

Impeller sizes that can be used with the iQ3612

| Diameter of impeller | Blade angle |
|----------------------|---------------|
| 154mm | 22°, 28°, 34° |
| 172mm | 22°, 28°, 34° |
| 200mm | 22°, 28°, 34° |
| 230mm | 22°, 28°, 34° |
| 254mm | 22° |



Diagram



Electrical connections

