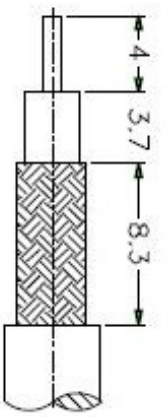
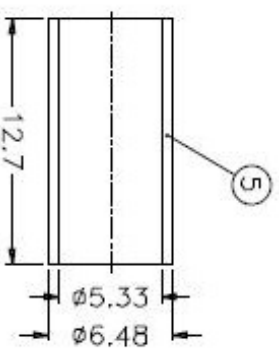
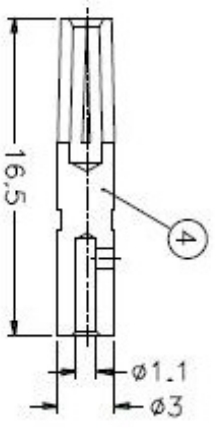
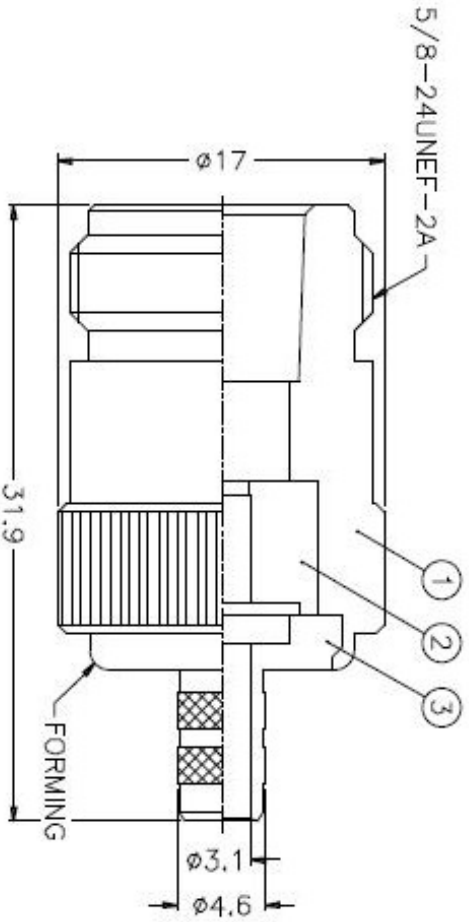


ISS	ZONE	DESCRIPTION \ PER REQUEST \ DATE



RECOMMENDED
CABLE STRIPPING DIM'S



- 1. CRIMPED FERRULE
HEX CRIMP SIZE .213"
- 2. CRIMPED CONTACT PIN
HEX CRIMP SIZE .100"

NOTES: FINISH (PLATING THICKNESS IN MICRO-INCHES)

- 1. BRASS PBR OO-B-625
- 2. NICKEL PL. 100 MIN. THICK OVER COPPER STRIKE
- 3. PHOSPHOR BRONZE PBR OO-B-750
- 4. GOLD PL. 5 MIN. THICK OVER NICKEL PL. 100 MIN. THICK OVER COPPER STRIKE
- 5. PTFE MIL-P-19468

NO.	DESCRIPTION	MATERIAL	FINISH	QTY	DRAWING NO.
5	FERRULE	COPPER	NOTE 2	1	FR-648/533X
4	CONTACT PIN	NOTE 3	NOTE 4	1	N7000-4-3/11
3	BARREL	NOTE 1	NOTE 2	1	N5000-3-46/31
2	INSULATOR	NOTE 5	NATURAL	1	N5000-4T-50-A
1	BODY	NOTE 1	NOTE 2	1	N7000-1

DIMENSIONS ARE IN MILLIMETERS
UNLESS OTHERWISE SPECIFIED
TOLERANCES

0.5-6	= ±0.2
8-30	= ±0.4
30-120	= ±0.6
120-315	= ±1
315-1000	= ±1.6
1000-2000	= ±2.4

PART NO.	N6121A1-NT3G-1-50
APPROVED	DATE 10-11-01'
CHECKED	DATE 10-11-01'
DRAWN	DATE 10-11-01'
SCALE	2.5/1
ISSUE	A
FILE NO.	

Amphenol

TITLE
N CRIMP JACK

DRAWING NO.
KJ-N6121A1-NT3G-58CU-50

ITEM NO.