



ALL RIGHTS RESERVED. NO PORTION OF THIS PUBLICATION, WHETHER IN WHOLE OR IN PART CAN BE REPRODUCED WITHOUT THE EXPRESS WRITTEN CONSENT OF SPC TECHNOLOGY.

SPC-F005.DWG

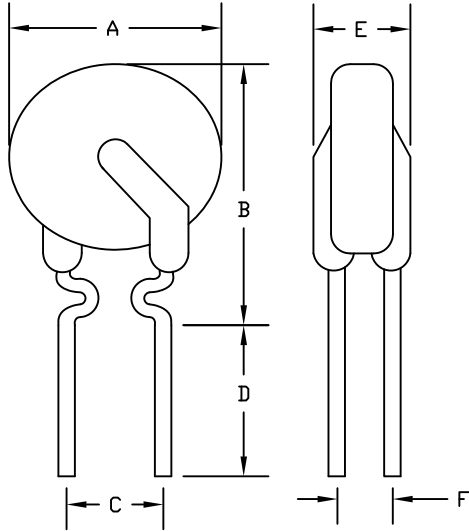
REVISIONS

DDC. NO. SPC-F005 * Effective: 7/8/02 * DCP No: 1398

DCP #	REV	DESCRIPTION	DRAWN	DATE	CHECKD	DATE	APPRVD	DATE
2063	A	RELEASED	JN	08/04/09	JWM	08/06/09	JWM	08/06/09

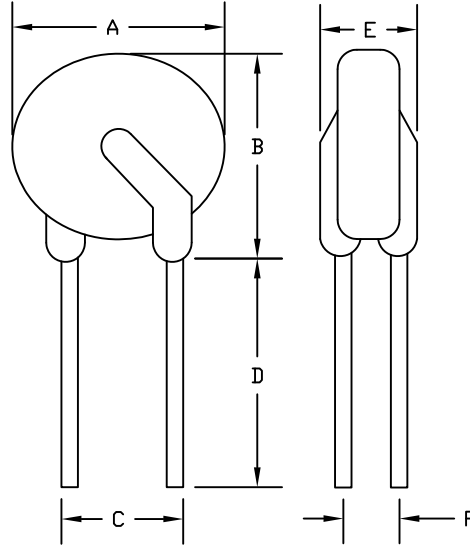


Option 1



Lead Size: 24 AWG
Ø0.51mm Diameter

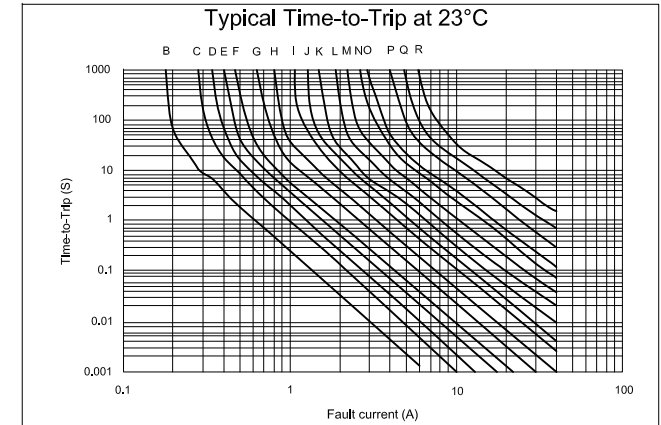
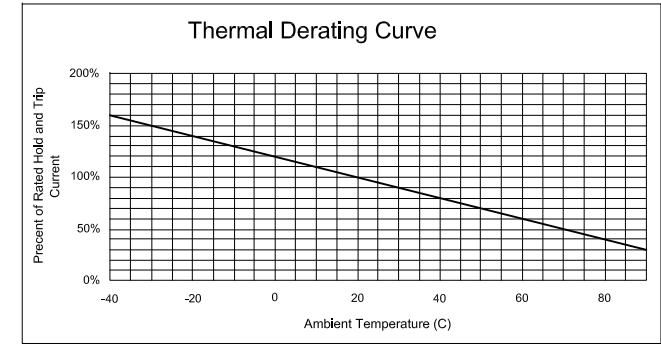
Option 2



Lead Size: 20 AWG
Ø0.81mm Diameter

SPECIFICATION

1. Lead Material: Tin plated copper
2. Soldering characteristic: MIL-STD-202, Method 208E.
3. Insulating coating: Flame retardant epoxy, UL-94V-0
4. Operating Current: 50mA~3.75A
5. Maximum Voltage: 60V
6. Temperature Range: -40°C to 85°C



Mfg. P/N	A Maximum	B Maximum	C Typical	D Minimum	E Maximum	F Typical	Hold Current I _H , A	Trip Current I _T , A	Max. Time To Trip at 5xI _H	Maximum Current I _{MAX} , A	Rated Voltage V _{MAX} , Vdc	Typical Power Pd, W	Resistance		Drawing Option	Time-to-Trip Curve Option
													R _{MIN} ohms	R _{MAX} ohms		
MC33169	7.4	12.7	5.1	7.6	3.1	1.1	0.1	0.2	4	40	60	0.38	2.5	7.5	Option 1	Option B
MC33170	7.4	12.7	5.1	7.6	3.1	1.1	0.17	0.34	3	40	60	0.48	2	8	Option 1	Option C
MC33171	7.4	12.7	5.1	7.6	3.1	1.1	0.2	0.4	2.2	40	60	0.41	1.83	4.4	Option 1	Option D
MC33172	7.4	12.7	5.1	7.6	3.1	1.1	0.25	0.5	2.5	40	60	0.45	1.25	3	Option 1	Option E
MC33173	7.4	13	5.1	7.6	3.1	1.1	0.3	0.6	3	40	60	0.49	0.88	2.1	Option 1	Option F
MC33174	7.6	13.5	5.1	7.6	3.1	1.1	0.4	0.8	3.8	40	60	0.56	0.55	1.29	Option 1	Option G
MC33175	7.9	13.7	5.1	7.6	3.1	1.1	0.5	1	4	40	60	0.77	0.5	1.17	Option 1	Option H
MC33176	9.7	14.5	5.1	7.6	3.1	1.1	0.65	1.3	5.3	40	60	0.88	0.31	0.72	Option 1	Option I
MC33177	10.4	15.2	5.1	7.6	3.1	1.1	0.75	1.5	6.3	40	60	0.92	0.25	0.6	Option 1	Option J
MC33178	11.7	15.8	5.1	7.6	3.1	1.1	0.9	1.8	7.2	40	60	0.99	0.2	0.47	Option 1	Option K
MC33179	13	18	5.1	7.6	3.1	1.4	1.1	2.2	8.2	40	60	1.5	0.15	0.38	Option 2	Option L
MC33180	14.5	19.6	5.1	7.6	3.1	1.4	1.35	2.7	9.6	40	60	1.7	0.12	0.3	Option 2	Option M
MC33181	16.3	21.3	5.1	7.6	3.1	1.4	1.6	3.2	11.4	40	60	1.9	0.09	0.22	Option 2	Option N
MC33182	17.8	22.9	5.1	7.6	3.1	1.4	1.85	3.7	12.6	40	60	2.1	0.08	0.19	Option 2	Option O
MC33183	21.3	26.4	10.2	7.6	3.1	1.4	2.5	5	15.6	40	60	2.5	0.05	0.13	Option 2	Option P
MC33184	24.9	30	10.2	7.6	3.1	1.4	3	6	19.8	40	60	2.8	0.04	0.1	Option 2	Option Q
MC33185	28.5	33.5	10.2	7.6	3.1	1.4	3.75	7.5	24	40	60	3.2	0.03	0.08	Option 2	Option R

DISCLAIMER:
ALL STATEMENTS AND TECHNICAL INFORMATION CONTAINED HEREIN ARE BASED UPON INFORMATION AND/OR TESTS WE BELIEVE TO BE ACCURATE AND RELIABLE. SINCE CONDITIONS OF USE ARE BEYOND OUR CONTROL, THE USER SHALL DETERMINE THE SUITABILITY OF THE PRODUCT FOR THE INTENDED USE AND ASSUME ALL RISK AND LIABILITY WHATSOEVER IN CONNECTION THEREWITH.

TOLERANCES:
UNLESS OTHERWISE SPECIFIED, DIMENSIONS ARE FOR REFERENCE PURPOSES ONLY.

DRAWN BY:	DATE:
Jason Nash	08/06/09
CHECKED BY:	DATE:
JWM	08/06/09
APPROVED BY:	DATE:
JWM	08/06/09

DRAWING TITLE:			
Radial Leaded PTC Resettable Fuse			
SIZE	DWG. NO.	ELECTRONIC FILE	REV
A	Ta-1190	Ta-1190.dwg	A
SCALE: NTS	U.O.M.: INCHES [mm]	SHEET: 1 OF 1	