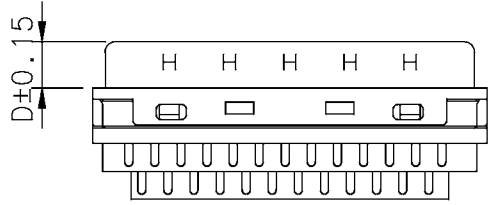
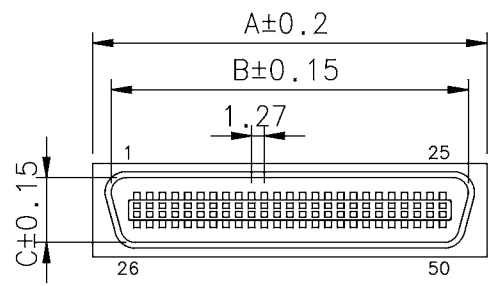
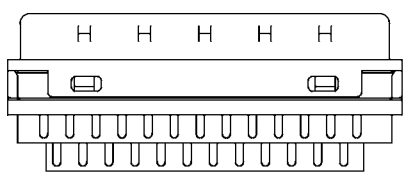
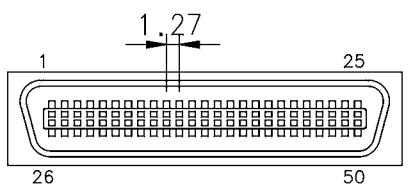
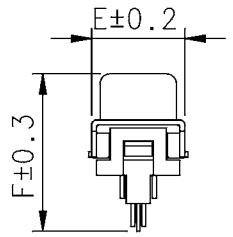


Dimensions

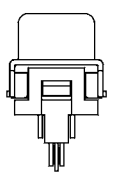
NO OF CONTACTS	A	B	C	D	E	F
14	16.45	12.80	6.46	4.60	8.50	16.40
20	20.00	16.60	6.40	4.60	9.30	15.20
26	24.00	20.40	6.46	4.60	9.30	15.50
36	30.40	26.70	6.46	4.60	8.50	15.20
50	39.30	35.60	6.46	4.60	9.30	15.50



A Type



M Type



FEATURES:

- Half pitch 1.27mm(.050") series
- Ribbon type male connector solder type for cable
- Assembly hood with plastic steel inner shell or Die-Cast metal hood
- Fully EMI/RFI shielded

MATERIALS:

- Housing: Thermoplastic P.B.T UL94V-0 black
- Contacts: Phosphor bronze mating end selective gold plated
- Shell: Steel nickel plated over copper

ELECTRICAL:

- Current Rating: 1 Amp
- Insulation Resistance: >500M Ω /in
- Withstanding Voltage: AC 500V/r.m.s for 1 Minute
- Contact Resistance: 35m Ω MAX
- Temperature Range: -55°C ~ +105°C

MD5 SC 50 M 0 A

SERIES

Solder termination
NUMBER OF CONTACT:
14, 20, 26, 36, 50

CONTACT TYPES:

M = male

CONTACT PLATING:

- 0 = selective flash gold
- 1 = selective 15u" gold
- 2 = selective 30u" gold

Hood option :
M : without hood
A : with hood



Amphenol Socapex		TOL. GEN.									
Usine de Dole		VOLUME PIECE									
		SURFACE PIECE									
		PROTECTION									
ECH. ENS.		TRAITEMENT									
N SERIE		MATIERE									
		DOSSIER		CLIENT		MODIFICATIONS		EXEC. DATE		Approb IND.	
DATE DU TIRAGE		DESIGNATION		N INTERNE							
		MINI D SERIES		MD5 SC xxM							