

MD5 ML 68 S14

SERIES
plastic hood
with spring latches

SIZE
Entry and hole size :
S11 : straight entry dia. 11.00
S14 : straight entry dia. 14.00

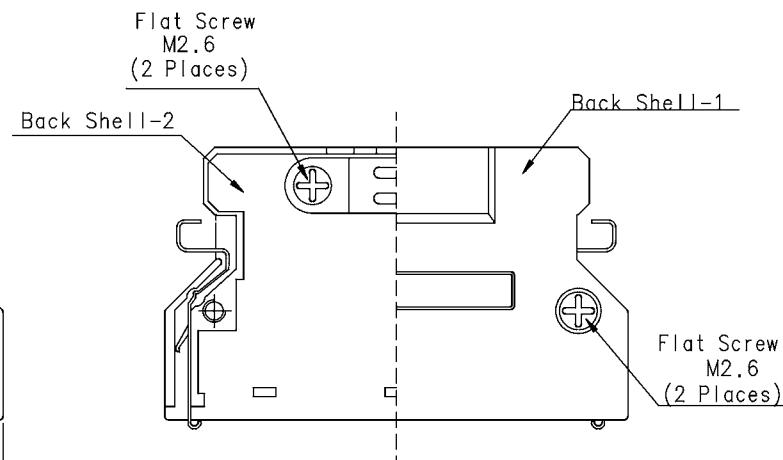
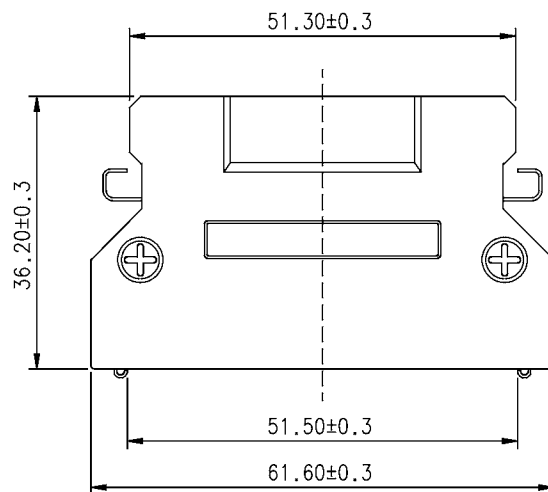
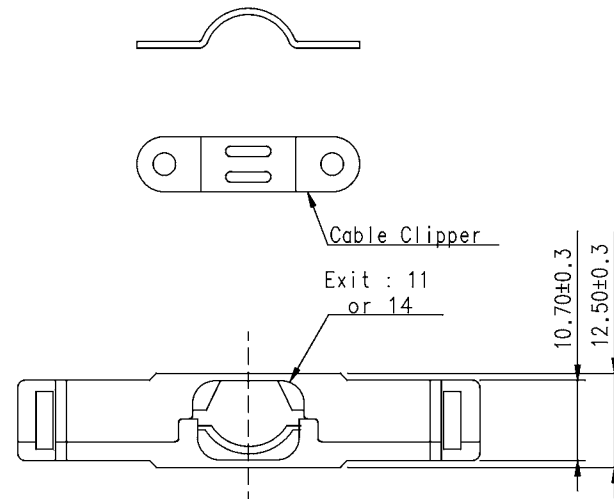
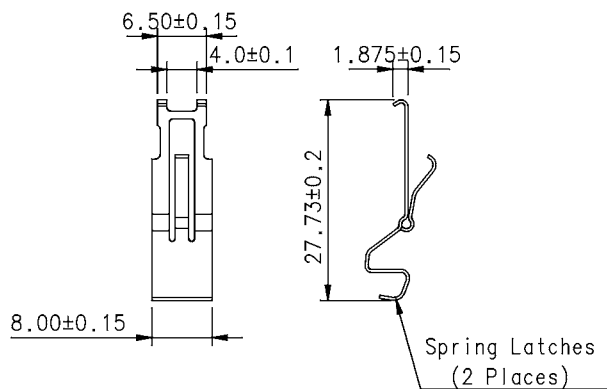


FEATURES:

- Round cable straight exit
- Strain relief staple with spring latches
- Backshell desing by Die-Cast
- Excellent EMI/RFI protection

MATERIALS:

- Backshell: Zinc plated nickel over copper
- Spring latches: Phosphor Bronze over Nickel
- Screw: steel nickel plated over copper
- Cable Clipper: steel nickel plated



Amphenol Socapex		TOL. GEN.							
Usine de Dole		VOLUME PIECE							
		SURFACE PIECE							
		PROTECTION							
		TRAITEMENT							
		MATIERE							
ECH. 1,5	ENS.	DOSSIER		CLIENT	MODIFICATIONS	ATO	30/05 2005	ATO	A
N SERIE									
DATE DU TIRAGE	DESIGNATION	N INTERNE							
	MINI D SERIES	MD5 ML 68							