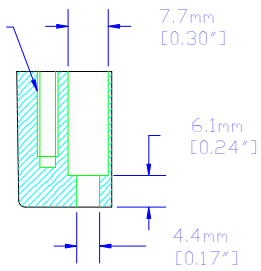
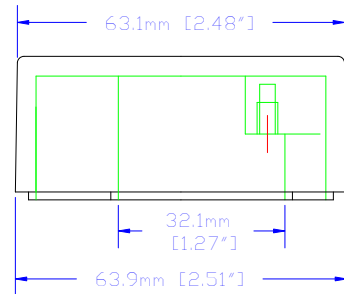


M4 THREAD FOR LID  
SCREWS 4 PLACES

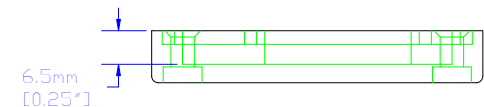
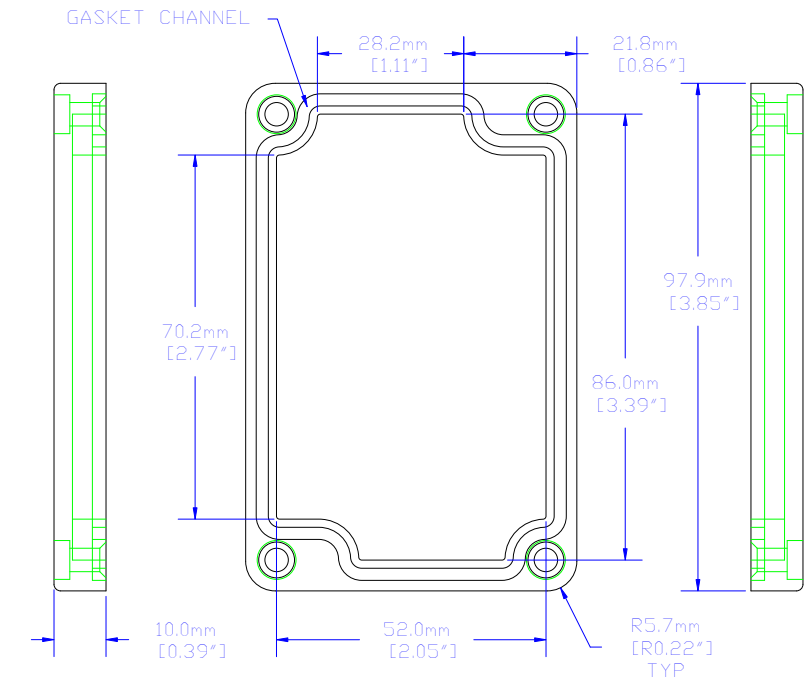
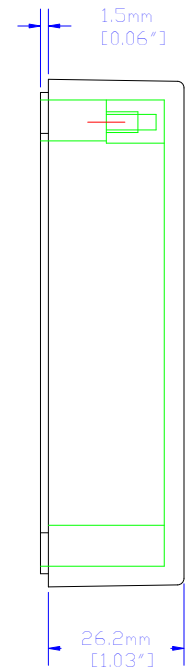
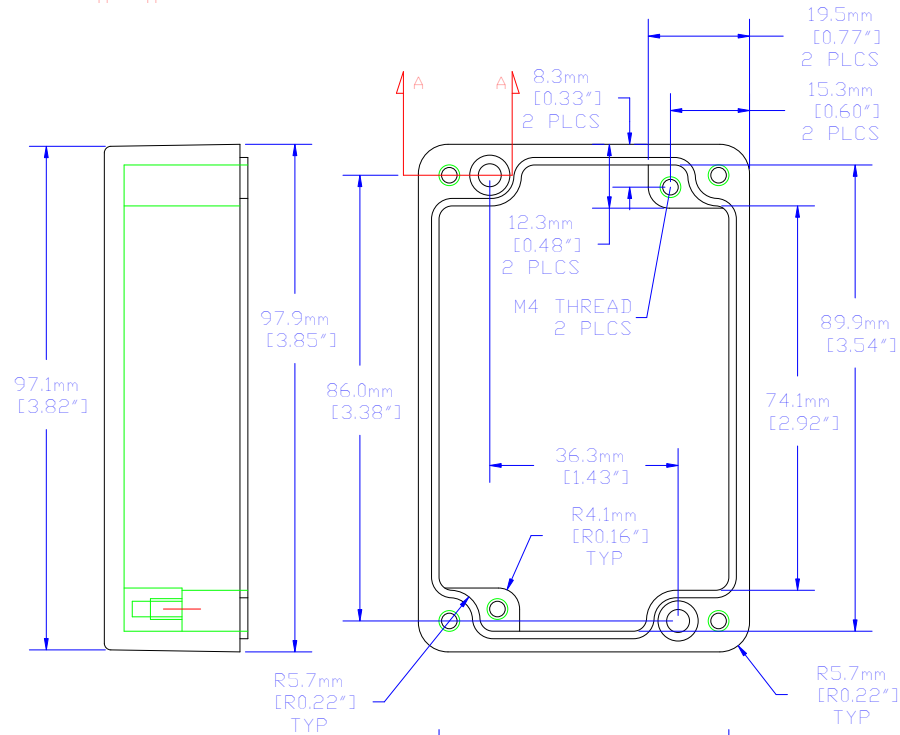
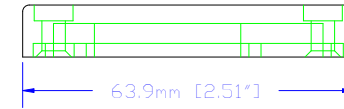


A - A

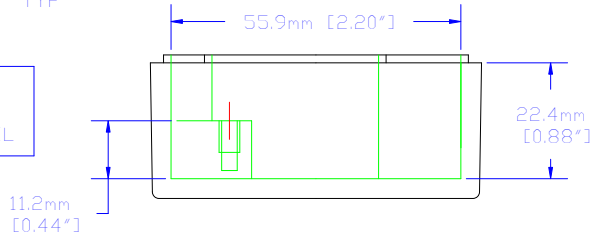


NOTES

DESIGNED TO MEET THE REQUIREMENTS OF IP65, & NEMA 4X  
TONGUE & GROOVE CONSTRUCTION WITH A MOLDED ONE PIECE SILICON GASKET.  
COMES WITH 4 STAINLESS STEEL MACHINE LID SCREWS, CAPTIVATED WITH 4 RUBBER O-RINGS.  
COMES WITH 2 GROUNDING SCREWS AND WASHERS.  
FINISH: NONE OR SUFFIX "BK" BLACK, OR SUFFIX "GY" GRAY (RAL 7001) POLYESTER POWDER



SIDE VIEWS DO NOT DETAIL  
SCREW CHANNELS SEE  
"A - A" FOR CHANNEL DETAIL



BOX

LID

For the best fit print  
on legal size paper.

THIS DRAWING IS PROPRIETARY INFORMATION OF  
HAMMOND MFG.CO.LTD. NOT TO BE USED WITHOUT  
EXPRESSED WRITTEN PERMISSION  
OF HAMMOND MFG.CO.LTD.

△	N/A	RELEASE	---	10/14/02	MJM
Rev	ECN	Description		Date	By

Unless otherwise spec'd  
dimensions are in  
millimeters Tolerances are:

X ±.25  
.XX ±.50  
.XXX ±.500  
.XXXX ±.1300  
Holes ±.1300  
Angles ±5°

Dwn	M. MERCER
Date	10/14/02
Chk	---
Mat'l	CAST ALUMINUM

HAMMOND MANUFACTURING CO. LTD.  
Electronics Group, Waterloo, Ont. - Cheektowaga, NY

HAMMOND 1590Z SERIES  
CASTED AL ENCLOSURES

Sheet	1 of 1	Part #	1590Z062	Dwg:	1590Z062/A
-------	--------	--------	----------	------	------------