

# CFPS-67, -68, -69

ISSUE 1; 20 APRIL 2006

## Delivery Options

- Please contact our sales office for current leadtimes

## Output Compatibility

- Tri-state CMOS
- Drive Capability 15pF max

## Package Outline

- 5.0 × 3.2 × 0.95mm SMD Ceramic Package

## Standard Frequency Stabilities

- ±25ppm, ±50ppm, ±100ppm (inclusive of supply voltage & output load variations over the operating temperature range)

## Operating Temperature Ranges

- -10 to 70°C ( CFPS-67, -68, -69 )
- -40 to 85°C ( CFPS-67I, -68I, -69I)

## Storage Temperature Range

- -55 to 125°C

## Tri-state Operation

- Logic '1' to pad 1 enables oscillator output ( $\geq 70\% V_s$ )
- Logic '0' to pad 1 disables oscillator output; when the oscillator output goes to the high impedance state ( $\leq 30\% V_s$ )
- No connection to pad 1 enables oscillator output
- Standby current 1µA max

## Solder Conditions

- For typical soldering conditions, please see the relevant pages in Applications Notes

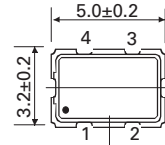
## Marking

- Model number
- Frequency

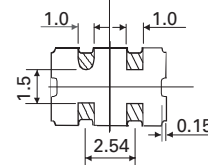
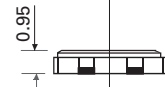
## Minimum Order Information Required

- Frequency + Model Number + Operating Temperature Code (if applicable) + Frequency Stability

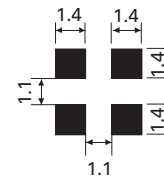
## Outline in mm



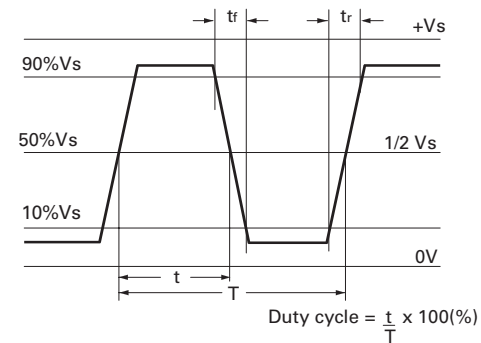
- Pad Connections
1. Enable/Disable
  2. GND
  3. Output
  4. +Vs



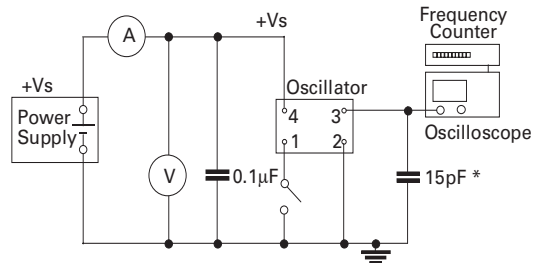
## Solder pad layout



## Output Waveform



## Test circuit



\* Inclusive of jiggging & equipment capacitance

SURFACE MOUNT  
SPXOs

**Electrical Specification - maximum limiting values when measured in test circuit**

Frequency Range	Frequency Stabilities	Supply Voltage	Supply Current	Rise Time (tr)	Fall Time (tf)	Duty Cycle	Model Number
1.8 to <32.0MHz	±25ppm*, ±50ppm, ±100ppm	2.5V ±5%	1.5mA	12ns	12ns	45/55%	CFPS-67
32.0 to 50.0MHz			2.5mA				CFPS-67I
1.8 to <32.0MHz		2.8V ±5%	2.0mA				CFPS-68
32.0 to 50.0MHz			3.0mA				CFPS-68I
1.8 to <32.0MHz		3.3V ±5%	2.5mA				CFPS-69
32.0 to 50.0MHz			3.5mA				CFPS-69I

**Ordering Example**

Frequency \_\_\_\_\_ 24.0MHz \_\_\_\_\_ CFPS-69 I C

Model No. \_\_\_\_\_

Operating Temperature Code: I = -40 to 85°C, Not applicable for -10 to 70°C \_\_\_\_\_

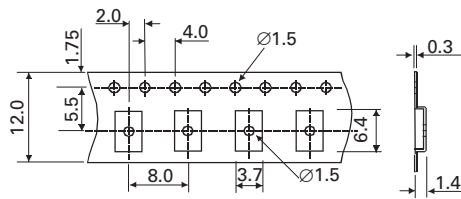
Frequency Stability: A = ±25ppm, B = ±50ppm, C = ±100ppm \_\_\_\_\_

\*Note - Code IA, ±25ppm over -40 to 85°C is not available

SURFACE MOUNT  
SPX08

Please note that the rise and fall times listed are the maximum values we specify to cover various frequency breaks. In practise the actual values are generally lower depending upon the spot frequency chosen. For typical values please contact our sales office.

**Outline in mm - Tape**



**Outline in mm - Reel**

