

R13 Round Rocker Switches 6A 250Vac



6A 250Vac T85

UL CSA 10A 125Vac & 6A 250Vac (For 16A call the factory)
UL 85°C, file E67774(S) CSA file LR45128

Single pole has μ contact gap
 Technical data on pages 4 & 5

Special products

Are made to order and can be supplied with a range of body and rocker/lens colours, print & lamp voltage

Call the factory for availability to your special requirements

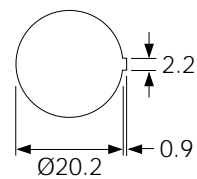
R13 112A2 - -

TERMINAL FUNCTION ROCKER BODY PRINT, COLOUR, VOLTAGE ETC

PRODUCT DETAILS

	 SP ON - OFF μ Bright colour ON signal Cat no. R13 112A2 - -	 Dimensions: $\varnothing 17.0$, $\varnothing 23.0$, 2.0, 5.5, 14.5, 8.1, 7.1, 7.1, 4.8x0.8
	 SP ON - OFF μ Lit Window Cat no. R13 112B2 - -	 Dimensions: $\varnothing 17.0$, $\varnothing 23.0$, 2.0, 5.5, 14.5, 8.1, 7.1, 7.1, 4.8x0.8
	 SP ON - OFF μ Paddle tip has red LED Cat no. R13 112LP - -	 Dimensions: $\varnothing 15.0$, $\varnothing 23.0$, 2.0, 10.0, 14.5, 8.1, 7.1, 7.1, 4.8x0.8
	 Indicator light Cat no. R9 92B - - -	 Dimensions: $\varnothing 17.0$, $\varnothing 23.0$, 2.0, 4.0, 14.5, 8.1, 14.2, 4.8x0.8
 	 SP ON - OFF μ R13 211A - - - SP ON - ON μ R13 211C - - -	<p>Sub-panel Mounting</p> Dimensions: $\varnothing 22.3$, 2.0, 12.0, 11.8, 7.1, 7.1, 4.8x0.8

PANEL CUT-OUT (mm)



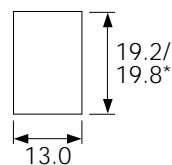
For R13 112A2
 R13 112B2
 R13 112LP
 R9 92B

Snap fixing into panel thickness up to 3.0



Protective cover L188

Snaps on to bodies (not R13 211 or R13 112LP) but reduces panel thickness by 0.6mm



For R13 211A
 R13 211C

* Dependent on panel thickness 0.75 - 3.0