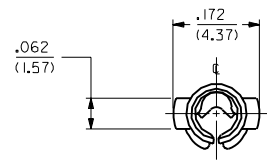
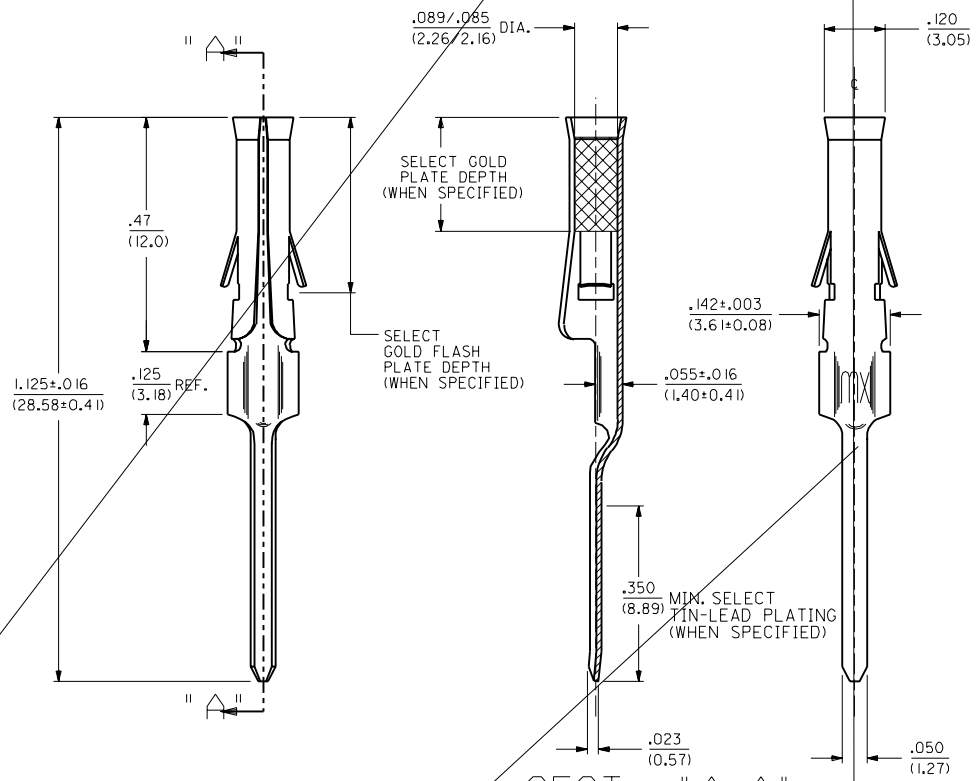


PART NO.	ENG. NO.	SUFFIX WAS
02-09-1134	1377-A(P913)1L	-ATL
02-09-5132	1377-A(P563)1L	-GL
PRELIMINARY	1377-A(P603)1L	



### LEGEND

1377-A(\*\*\*\*)\*  
 \* FORM L=LOOSE  
 \* FINISH CODE  
 P=PREPLATE  
 BLANK=POSTPLATE



- NOTES:
1. RECOMMENDED P.C. BOARD HOLE SIZE IS  $.062 \pm .002 / (.157 \pm 0.05)$  DIA.
  2. INSERTION FORCE; 3.5 LBS. MAX. WHEN TERMINAL IS INSERTED INTO AN .093 SERIES HOUSING.
  3. THIS PART CONFORMS TO PROD. SPEC. 02-09.

- FINISH CODES:
- 913 HOT TIN-LEAD DIP .000100/(0.00254) MIN.
  - 563 SELECT GOLD PLATE .000030/(0.00076) MIN. IN CONTACT AREA, SELECT TIN-LEAD PLATE .000100/(0.00254) MIN. IN TAIL AREA OVER .000050/(0.00127) NICKEL OVERALL.
  - 603 SELECT GOLD PLATE .000030/(0.00076) MIN. IN CONTACT AREA, SELECT TIN-LEAD PLATE .000100/(0.00254) MIN. IN TAIL AREA OVER .000050/(0.00127) NICKEL OVERALL WITH SELECT GOLD FLASH .000010/(0.00025) MAX. IN AREA INDICATED.

### SECT. "A-A"

MATERIAL:  
 CARTRIDGE BRASS, ALLOY #C26000,  
 .010/(0.25) THICK, SPRING TEMPER

.010 ---  
 .014 0.25  
 --- 0.36

0 0  
 P.C. TAIL TERMINAL  
 FEMALE, .093/(2.36) DIA.

SEE CHART

SD-1377-

U	REVISE PER ECR U5 0799 CXC 2/14/95	RW
T	ADD 125 REF. ECR U2 0809 CXC 5/21/92	RW
S	ADDED NOTE 3. ECR U1 0722 CXC 6/11/91	RW
R	FINAL RELEASE ECR U1 0390 CXC 2/18/91	RW

1377X1  
 600

1 2 18 91  
 CP