

“clear innovation”

OPGD Lens System for Osram Golden Dragon LEDs



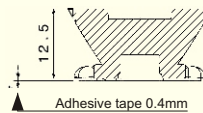
L₂Optics OPGD-1 base lenses position easily and accurately over the Golden Dragon LED. They are easy to fix onto the PCB using the integral self-adhesive pad.

The snap-lock sub-lenses attach easily, are very secure and do not move or drop out, once in place.

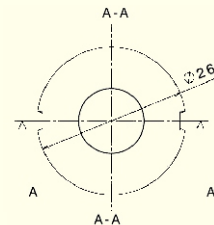
There are three different sub-lens illumination patterns available: spot, wide and oval.



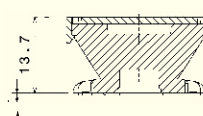
OPGD Series Base Spot Lens
(OPGD-1-002)



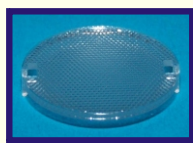
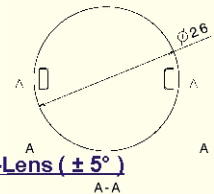
OPGD - Spot ($\pm 2^\circ$)



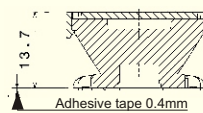
OPGD Diffuser Sub-Lens
(OPAA-1-DFL)



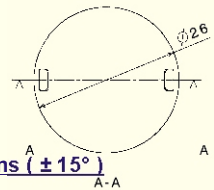
OPGD - Spot + Diffuser Sub-Lens ($\pm 5^\circ$)



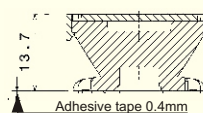
OPGD Wide Sub-Lens
(OPAA-1-WSL)



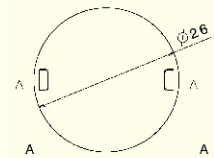
OPGD - Spot + Wide Sub-Lens ($\pm 15^\circ$)



OPGD Oval Sub-Lens
(OPAA-1-OSL)



OPGD - Spot + Oval Sub-Lens ($\pm 4^\circ \times 27^\circ$)



Product Coding Information

Base Lenses	
OPGD-1-002	OPGD Series Spot Base Module - 2°
Sub-Lenses	
OPAA-1-DFL	Spot Diffuser Sub-Lens - 5°
OPAA-1-WSL	Wide Sub-Lens - 15°
OPAA-1-OSL	Oval Sub-Lens - 4°x 27°