

# SERIES 1855 - MINIATURE DOUBLE-POLE ROCKER SWITCHES

TO 4 (1) A 250 V AC






## PRODUCT FEATURES

- ◆ Illuminated rocker switches
- ◆ Different lamp variants
- ◆ Powerful with 50 000 mechanical switching cycles
- ◆ Caulked terminals for reliable plugging of the receptacles

## ON REQUEST

- ◆ Other colors
- ◆ Other printing variants
- ◆ Other terminal types
- ◆ Other lamp variants
- ◆ Cable assembly

Mechanical life endurance	5E4
Contact resistance (new condition)	< 100 mOhm (1 A 12 V DC)
Insulation resistance (new condition)	> 100 MOhm (500 V DC)
Proof tracking	250 PTI
Protection type	IP 40
Ambient temperature	terminal side -20 °C ... +85 °C actuating side -20 °C ... +55 °C
Flammability	UL 94 V-2
Glow wire test temperature	850 °C
Material	actuator PA housing PA terminals silver plated
Plug force of the terminals	≤ 80 N
Approval marks	 /  / 
Suitable for appliances of protection class II	



ROCKER SWITCHES

PUSHBUTTON SWITCHES

TOGGLE SWITCHES

SLIDE SWITCHES

ROTARY SWITCHES

FOOT SWITCHES

FACT AND KEY SWITCHES

SNAP-ACTION SWITCHES

MICRO-SIGNAL SWITCHES

SENSORS

# SERIES 1855 - MINIATURE DOUBLE-POLE ROCKER SWITCHES

TO 4 (1) A 250 V AC

 double-pole	Lighting voltage in V	Actuator color / printing	Housing color	4 (1) A 250 V AC 1E4	6 A 125 V AC 1/10 HP	4 A 250 V AC 1/10 HP	Terminal type	Terminal description	Contact distance in mm	Contact material	EN 60335 cap. 30 conform "G"	Stock version
<b>ON / OFF switch (DPST)</b>												
<b>1855.0102</b>	230			●		●			≈ 3	Ag		
<b>1855.0108</b>	230			●		●			≈ 3	Ag		●
<b>1855.1102</b>	230			●		●		4.8	≈ 3	Ag		●
<b>1855.1104</b>	230			●		●		4.8	≈ 3	Ag		●
<b>1855.1108</b>	230			●		●		4.8	≈ 3	Ag		●
<b>1855.1115</b>	230			●		●		4.8	≈ 3	Ag	●	
<b>1855.1118</b>	230			●		●		4.8	≈ 3	Ag	●	
<b>1855.1122</b>	110					●		4.8	≈ 3	Ag		
<b>1855.1124</b>	110					●		4.8	≈ 3	Ag		

Further information under

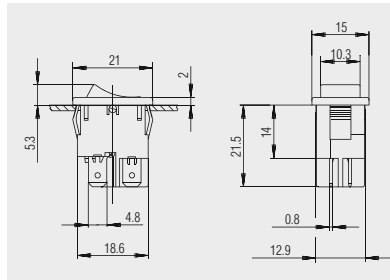
[WWW.MARQUARDT-SWITCHES.COM](http://WWW.MARQUARDT-SWITCHES.COM)

# SERIES 1855 - MINIATURE DOUBLE-POLE ROCKER SWITCHES

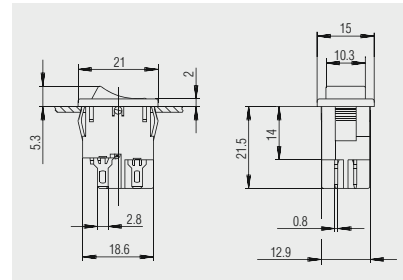
TO 4 (1) A 250 V AC



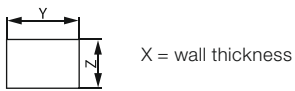
Basic type 1855



Quick-connect terminal  
4.8 x 0.8



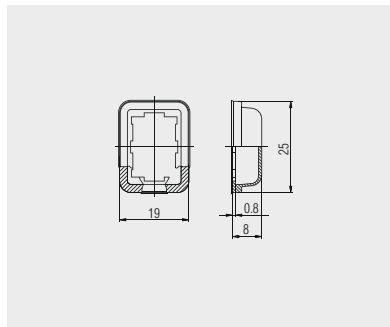
Solder terminal



X	Y	Z
0.75 ... 1.25	19.2 <sup>-0.1</sup>	12.9 <sup>+0.1</sup>
1.25 ... 2	19.4 <sup>-0.1</sup>	12.9 <sup>+0.1</sup>
2 ... 3	19.8 <sup>-0.1</sup>	12.9 <sup>+0.1</sup>



Protection cap  
203.089.011



Transparent PVC - protection cap.  
Serves as dust and water protection  
for the actuating side.

ROCKER SWITCHES

PUSHBUTTON SWITCHES

TOGGLE SWITCHES

SLIDE SWITCHES

ROTARY SWITCHES

FOOT SWITCHES

FACT AND KEY SWITCHES

SNAP-ACTION SWITCHES

MICRO-SIGNAL SWITCHES

SENSORS