

# Customer Information Sheet

DRAWING No.: M80-4C1XXXXSI, M80-4C1XXXXSI-00-000-00-000

SHT 2 OF 2

IF IN DOUBT - ASK

(C)

NOT TO SCALE

THIRD ANGLE PROJECTION

ALL DIMENSIONS IN mm

## SPECIFICATIONS:

### MATERIAL:

MOULDING = GLASS-FILLED PPS, UL94V-0, BLACK  
CONTACT CLIP = BERYLLIUM COPPER  
CONTACT SHELL = BRASS  
BACKSHELL = ALUMINIUM ALLOY  
BANDIT TIE & J/SCREW = STAINLESS STEEL

### FINISH:

CONTACTS  
05 = 0.3µ GOLD CLIP, 0.25-0.3µ GOLD SHELL  
42 = 0.3µ GOLD CLIP, 3.5-5.0µ 100% TIN SHELL  
OVER NICKEL  
BACKSHELL = NICKEL

### ELECTRICAL:

RF ATTENUATION = 10kHz TO 400MHz @ >30dBs  
IN GENERAL ACCORDANCE WITH MIL STD 1377 (1971)  
CURRENT RATING AT 25°C = 3.0A MAX  
CURRENT RATING AT 85°C = 2.2A MAX  
WORKING VOLTAGE = 120V AC/DC  
VOLTAGE PROOF = 360V AC/DC  
CONTACT RESISTANCE = 25 mΩ MAX  
INSULATION RESISTANCE = 100 MΩ MIN

### MECHANICAL:

INSERTION FORCE (Ø0.5mm GAUGE) = 2.8N MAX  
WITHDRAWAL FORCE (Ø0.5mm GAUGE) = 0.2N MIN  
ENVIRONMENTAL:  
TEMPERATURE RANGE = -55°C TO +121°C

### PACKING:

SEE NOTES  
FOR COMPLETE SPECIFICATION, SEE COMPONENT  
SPECIFICATION C005XX (LATEST ISSUE) AND C042XX  
(LATEST ISSUE)

## NOTES:

- CONNECTOR IS SUPPLIED AS A KIT OF PARTS IN A BAG.  
BAGS WILL BE BULK PACKED INTO BOXES.
- FOR EXTRA CONTACTS, USE PART No.'s.  
M80-0130001 FOR M80-4C1XX42SI-00-000-00-000  
M80-0130005 FOR M80-4C1XX05SI-00-000-00-000
- FOR M80-4C1XXXXSI-00-000-00-000 THE RECOMMENDED  
WIRE TYPE = BS 3G 210 TYPE A, PTFE INSULATED  
24-28 AWG. MAX INSULATION DIAMETER = Ø1.10mm,  
STRIP WIRE BY 2.00mm.
- RECOMMENDED HAND CRIMP TOOL FOR ALL CONTACTS =  
M22520/2-01 WITH POSITIONER T5747.
- CONTACT INSERTION & EXTRACTION TOOL = Z80-280.
- TO APPLY CIRCLIPS USE HARWIN TOOL = Z80-300.
- SEE TOOLING INSTRUCTION SHEET IS-32 FOR ASSEMBLY  
DETAILS AVAILABLE AT:  
<http://www.harwin.com/downloads/instructions/>
- ALL PART LABELLING TO BE AS ORDER CODE, EITHER  
WITH TRAILING ZEROS OR LEFT BLANK AS PER ORDER  
CODE EXAMPLES 1 AND 2.
- 1 BANDIT TIE SUPPLIED PER KIT

## ORDER CODE:

**M80-4C1XXXXSI-XX-XXX-XX-XXX**

TOTAL No. OF CONTACTS  
06, 10, 14, 20, 26

FINISH CODE  
05 - GOLD CLIP, GOLD SHELL  
42 - GOLD CLIP, 100% TIN OVER NICKEL SHELL

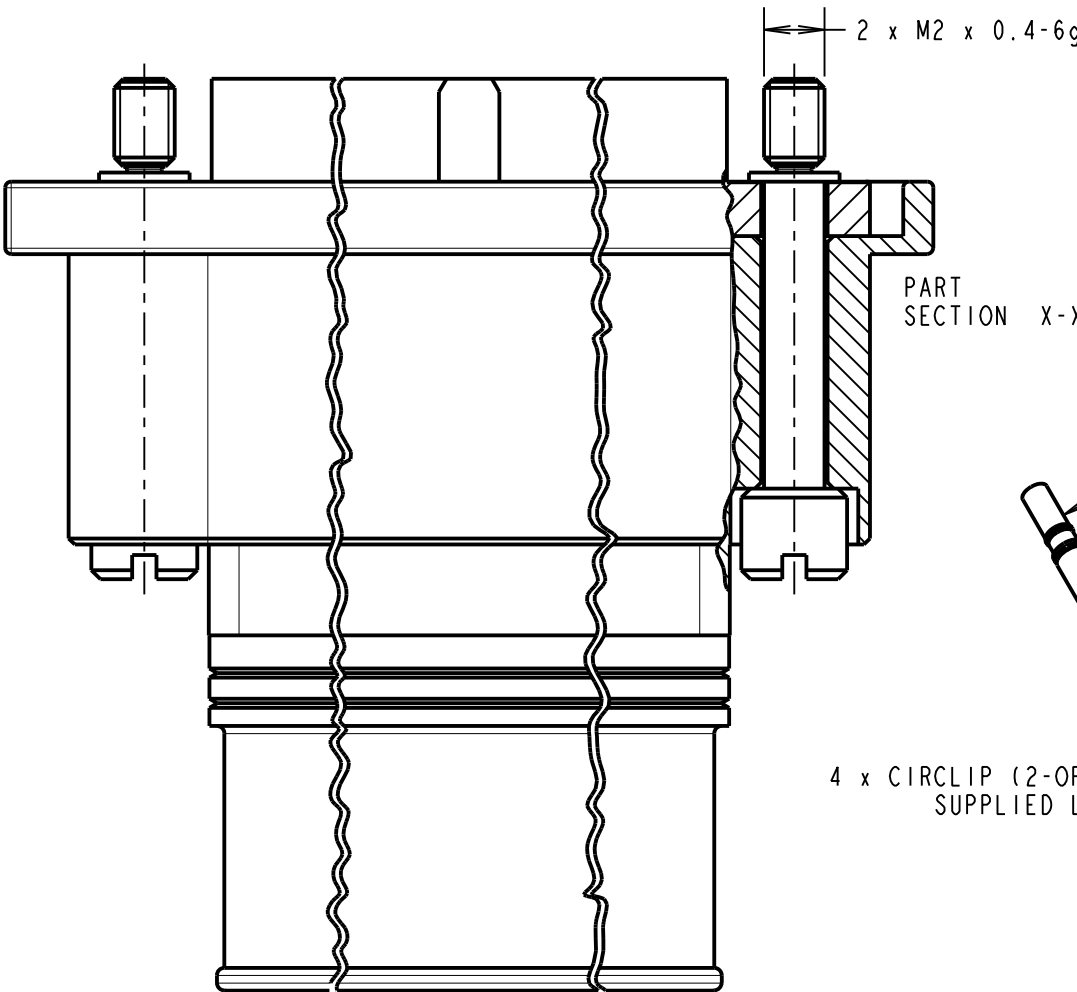
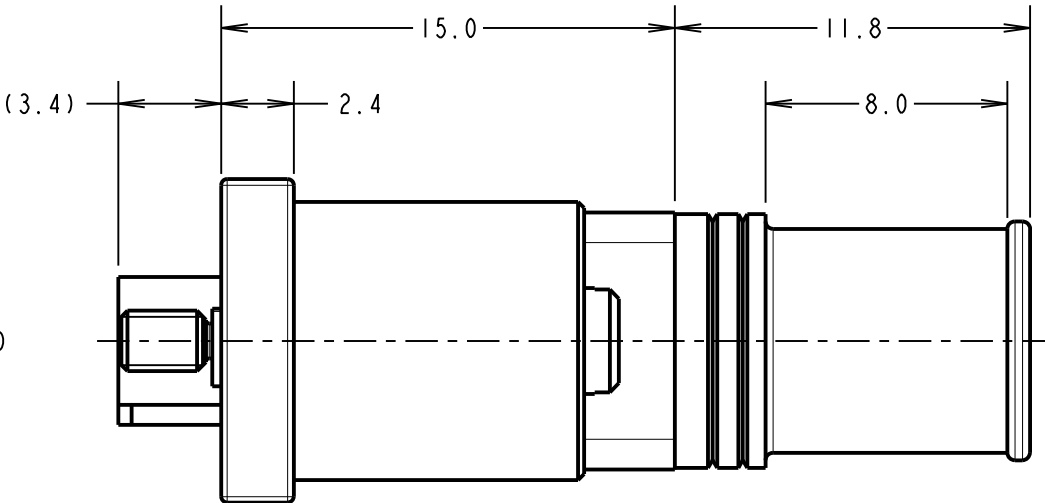
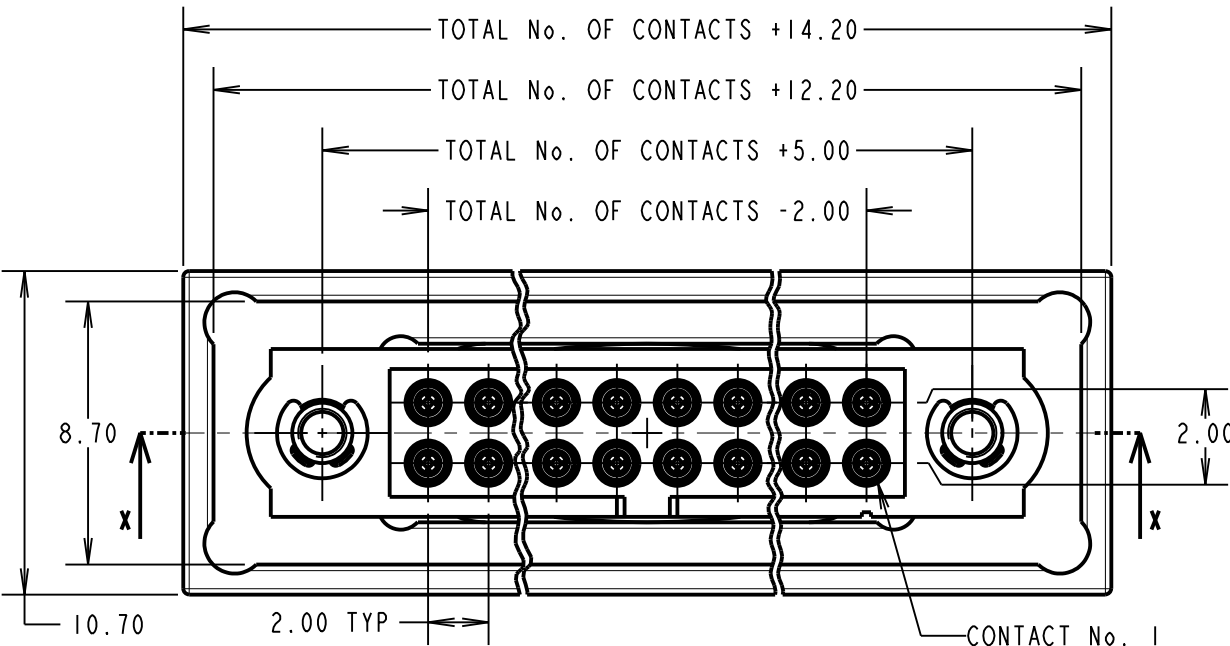
NUMBER OF SPECIAL CONTACTS  
X's CAN BE DISPLAYED AS TRAILING ZEROS OR LEFT BLANK  
SEE EXAMPLE ORDER CODES FOR EXPLANATION.

EXAMPLE ORDER CODE 1: CONNECTOR WITH 20 SMALL BORE  
SIGNAL CONTACTS, GOLD CLIP AND GOLD SHELL

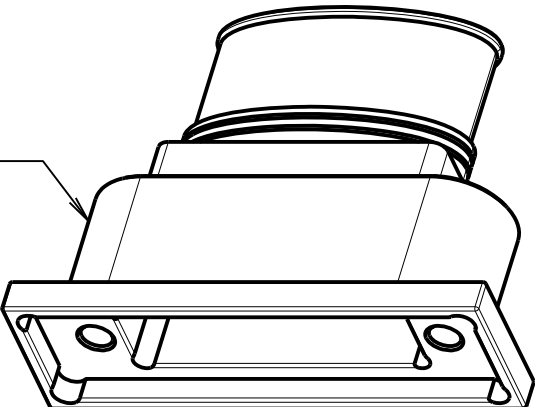
**M80-4C12005SI-00-000-00-000**

EXAMPLE ORDER CODE 2: CONNECTOR WITH 20 LARGE BORE  
SIGNAL CONTACTS, GOLD CLIP AND 100% TIN SHELL

**M80-4C12042SI**



1 x METAL BACKSHELL  
SUPPLIED LOOSE IN BAG



CONTACTS:  
FOR M80-4C1 = M80-01300XX (QTY = TOTAL No. OF CONTACTS)  
05 = FINISH CODE '05'  
01 = FINISH CODE '42'

4 x CIRCLIP (2-OFF REQUIRED)  
SUPPLIED LOOSE IN BAG  
SEE NOTE 6

2 x M2 SLOTTED JACKSCREWS  
SUPPLIED LOOSE IN BAG

SF	2	21.09.10	10944
NAME	ISS.	DATE	C/NOTE
APPROVED:	SF		
CHECKED:	RA		
DRAWN:	S.FLOWER		
CUSTOMER REF.:			
ASSEMBLY DRG:			

**HARWIN**

HARWIN USA TEL: 603 893 5376 FAX: 603 893 5396 mis@harwin.com	HARWIN Europe (UK) TEL: 023 9231 4545 FAX: 023 9231 4590 mis@harwin.co.uk	HARWIN Asia TEL: +65 6 779 4909 FAX: +65 6 779 3868 mis@harwin.com.sg
--	--	--

THIS DRAWING AND ANY  
INFORMATION OR DESCRIPTIVE  
MATTER SET OUT HEREON ARE  
CONFIDENTIAL AND COPYRIGHT  
PROPERTY OF THE HARWIN  
GROUP AND MUST NOT BE  
DISCLOSED, LOANED, COPIED  
OR USED FOR MANUFACTURING,  
TENDERING OR FOR ANY  
OTHER PURPOSE WITHOUT  
THEIR WRITTEN PERMISSION.

TOLERANCES  
X. = ±1mm  
X.X = ±0.25mm  
X.XX = ±0.10mm  
X.XXX = ±0.01mm  
ANGLES = ±5°  
UNLESS STATED

## MATERIAL:

SEE ABOVE

FINISH: SEE ABOVE

S/AREA:

## TITLE:

DATAMATE J-TEK  
FEMALE CRIMP (SMALL BORE) ASSY  
WITH METAL BACKSHELL

## DRAWING NUMBER:

**M80-4C1XXXXSI,  
M80-4C1XXXXSI-00-000-00-000**

SHT  
2  
OF  
2