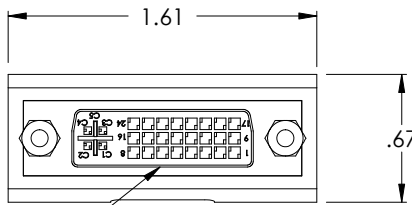
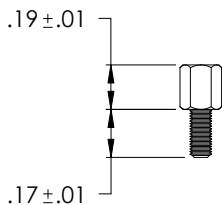
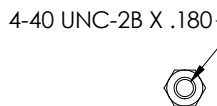


THE INFORMATION CONTAINED IN THIS DRAWING IS THE SOLE PROPERTY OF L-COM, INC. ANY REPRODUCTION IN PART OR WHOLE WITHOUT THE WRITTEN PERMISSION OF L-COM, INC. IS PROHIBITED.

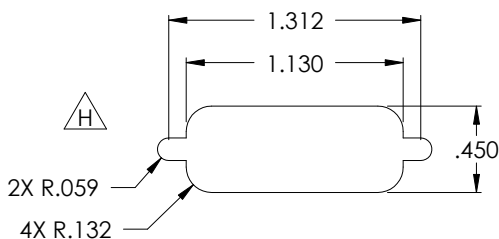
REVISIONS			
REV	DESCRIPTION	DATE	APPROVED
E	CHANGED SCREW LENGTH (ECN1325)	03/12/03	DFP
F	ECN16641: ADDED COMPONENT SPECIFICATION TABLE	1/16/04	DFP
G	ECN2010: HOUSING MATL WAS PVC. ADDED UL94V-0 RATED	3/18/05	DFP
H	ECN#2101: EDITED PANEL CUT-OUT DIMENSIONS	06/08/05	M.LAHEY



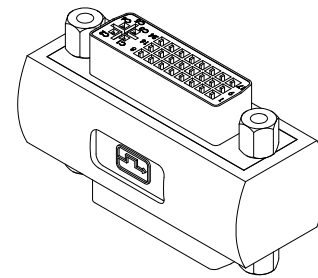
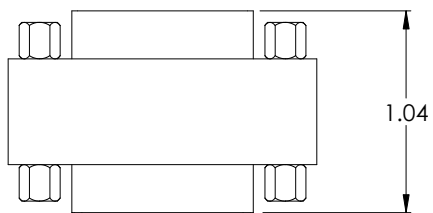
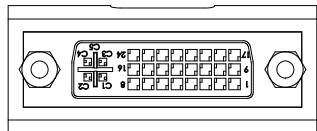
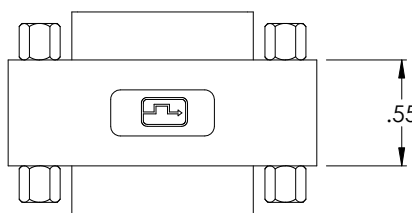
2X FEMALE DVH CONNECTOR



4X JACKSCREW SPECIFICATION



RECOMMENDED PANEL CUT-OUT  
MAXIMUM MATERIAL THICKNESS: .06"



Component Specifications	
<b>Material</b>	
Housing	High Temperature Thermoplastic, UL94V-0 rated Color: Ivory
Connector Shell	SPPC
Connector Insulator	PBT
Connector Contact	Phosphor Bronze
Hardware	Brass or Steel
Internal Shielding	Copper foil
<b>Finish</b>	
Connector Shell	Tin over Nickel
Contact	Gold Flash
<b>Electrical</b>	
Current Rating	1.5 A @ 40 Vac
Voltage rating	150Vac (MAX)
Insulation Resistance	1000MΩ @ 500 VDC
Contact Resistance	20mΩ (MAX)
<b>Environmental</b>	
Operating Temperature range	-20°C to 85°C

CS-212

NOTE  
1. CONNECTORS ARE WIRED STRAIGHT THROUGH, PIN TO PIN.

UNLESS OTHERWISE SPECIFIED,  
DIMENSIONS ARE IN INCHES  
TOLERANCES ARE:  
X ±.1  
XX ±.05  
XXX ±.005  
CABLE LENGTH TOLERANCE  
<300" ±5% >300" ±2%

APPROVALS	DATE
DRAWN BY D. PARHAM	12/26/2002
CHECKED BY T. CLARK	01/03/2003
APPROVED BY R. CARRICK	01/10/2003

CONFIGURATION DETAILS OF  
UNDIMENSIONED FEATURES  
MAY VARY

<b>L-com</b> CONNECTIVITY PRODUCTS		45 BEECHWOOD DRIVE NORTH ANDOVER, MA 01845	
PRODUCT DESCRIPTION DVH-BULKHEAD ADAPTOR			
DRAWING TITLE <b>OUTLINE DRAWING</b>			
SIZE <b>A</b>	FSCM NO. <b>43321</b>	DWG. NO. <b>DMB605FF-OD1</b>	REV. <b>H</b>
SCALE: NONE		CAD FILE: DMB605FF-OD1.SLDDRW	SHEET 1 OF 1