

4

3

2

1

THIS DRAWING IS UNPUBLISHED.

RELEASED FOR PUBLICATION

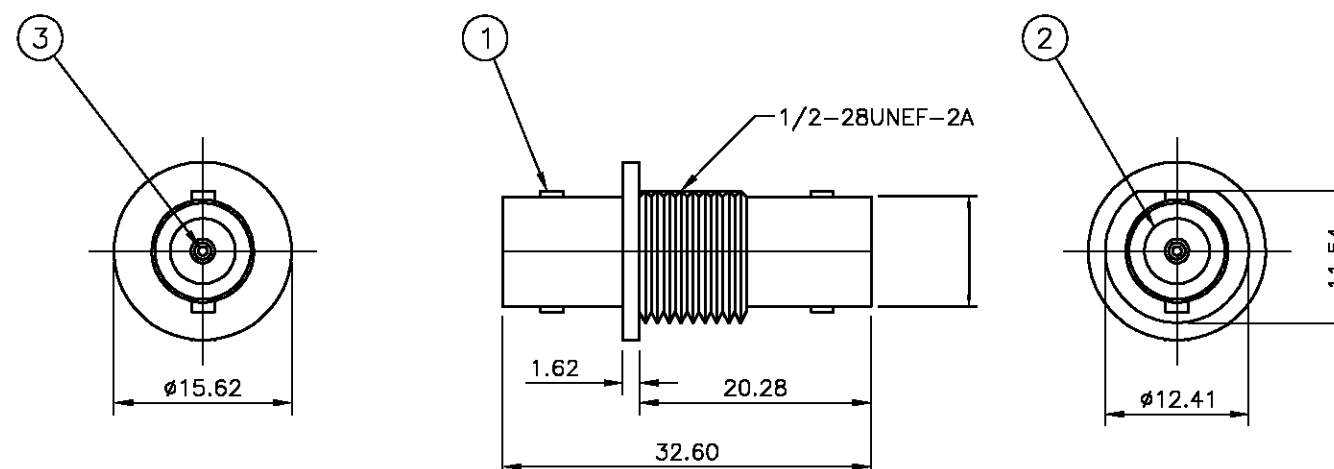
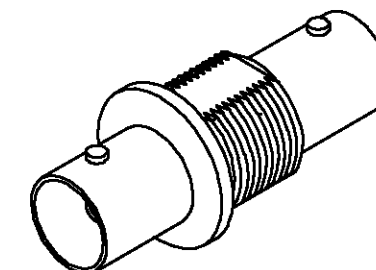
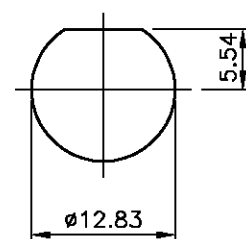
MAR , 2006.

© COPYRIGHT 2006 BY TYCO ELECTRONICS CORPORATION. ALL RIGHTS RESERVED.

LOC	DIST	REVISIONS			
P	LTR	DESCRIPTION	DATE	DWN	APVD
	B	ECR-07-003675	15FEB07	JMS	FWK

NOTES

1. 100 TRAY PACK IN ACCORDANCE WITH AMP SPEC 107-3275
2. SINGLE PACK IN ACCORDANCE WITH AMP SPEC 107-3275
3. GOLD PLATING
4. NICKEL PLATING
5. RECOMMENDED MOUNT NUT 1-1634816-0
6. RECOMMENDED LOCKWASHER 1-1634817-0
7. CHARACTERISTICS
FREQUENCY RANGE: DC-4GHz
INSULATION RESISTANCE: 5000 MOHMS
WORKING VOLTAGE: 500V
DIELECTRIC WITHSTAND VOLTAGE: 1500V RMS
TEMPERATURE RATE: -55°C TO +85°C
CONTACT RESISTANCE: 3 mOHMS
8. MECHANICAL CHARACTERISTICS
DURABILITY: 50 CYCLES
9. FOR TECHNICAL DATA REFER TO YOUR LOCAL TYCO ELECTRONICS SALES OFFICE
10. ALL DIMENSIONS ARE NOMINAL FOR REFERENCE ONLY UNLESS OTHERWISE STATED

RECOMMENDED
PANEL CUTOUT
DIMENSIONS

						1	1	PHOS BRONZE	3
						1	1	POLYMETHYLPENTENE	2
						1	1	ZINC ALLOY	1
						5--1	5--0	MATERIAL	DESCRIPTION
									ITEM
QUANTITY PER ASSY								PARTS LIST	

THIS DRAWING IS A CONTROLLED DOCUMENT.		DWN J.SANDWELL 20MAR06	Tyco Electronics Corporation Bideford, UK, EX39 4HE						
DIMENSIONS: mm		CHK S.PARLOW 20MAR06	NAME BNC BULKHEAD ADAPTOR JACK - JACK						
TOLERANCES UNLESS OTHERWISE SPECIFIED:		APVD F.WHEELER-KING 20MAR06	SIZE A3						
0 PLC ± - 1 PLC ± - 2 PLC ± - 3 PLC ± - 4 PLC ± - ANGLES ± -		PRODUCT SPEC	CAGE CODE 00779						
MATERIAL SEE TABLE		FINISH -	DRAWING NO C-1634530						
		WEIGHT -	RESTRICTED TO -						
CUSTOMER DRAWING		SCALE NTS			SHEET 1 OF 1		REV B		