

Outside Micrometer

Specifications

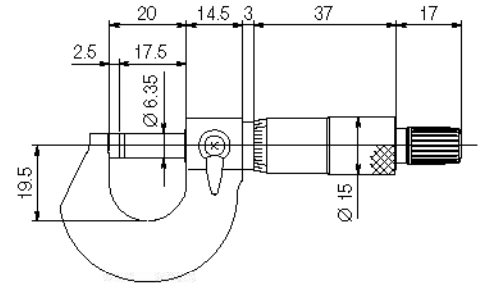
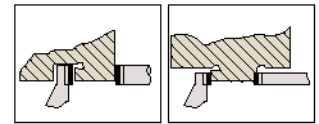
Accuracy: DIN 863-1
 Graduation: 0,01 mm
 Scales: thimble and sleeve
 satin chrome finish,
 \varnothing 15 mm
 Measuring spindle: \varnothing 6,35 mm
 spindle pitch 0,5 mm
 with spindle lock
 Measuring surfaces: carbide-tipped,
 precision ground and
 micro-lap finish
 Frame: forged steel frame,
 satin chrome finish
 Measuring force: 5-10 N
 Including box, key

Series 101

DIN 863-1 Small version



101-101



Measuring range mm	No.	Mass g
0-15	101-101	125

Specifications

Accuracy: DIN 863-1
 Scales: thimble and sleeve
 satin chrome finish,
 \varnothing 18 mm
 Measuring spindle: spindle pitch 0,5 mm
 with spindle lock
 Measuring surfaces: carbide-tipped,
 precision ground and
 micro-lap finish
 Frame: enameled
 Measuring force: 5-10 N
 Including box, gauge block (from 25-100 mm),
 up to 50 mm with factory certificate, insulation,
 key

Series 102

DIN 863-1 Rugged design



102-301

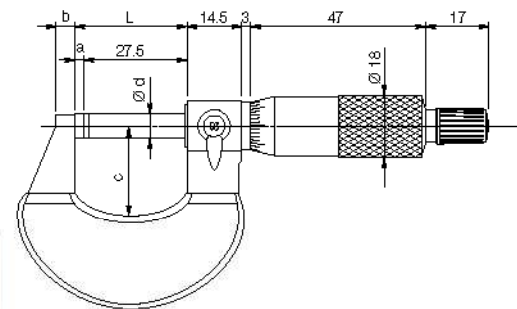


Factory test certificate
 Measuring range up to 50 mm

Measuring range mm	No.	Graduation	L	a	b	c	d	Mass g
0- 25	102-301	0,01	30,3	2,8	5	26	6,35	180
25- 50	102-302	0,01	55,3	2,8	8	32	6,35	270
50- 75	102-303	0,01	80,3	2,8	9	45	6,35	375
75-100	102-304	0,01	105,3	2,8	10	58	6,35	490
0- 25	102-307	0,001	30,3	2,8	5	26	6,35	180
25- 50	102-308	0,001	55,3	2,8	8	32	6,35	270
with friction thimble								
0- 25	102-305	0,01	30,3	2,8	5	26	6,35	180
25- 50	102-306	0,01	55,3	2,8	8	32	6,35	270



102-305 friction thimble



Series 102

As a set



102-911-01

Measuring range mm	No.	Set combination	Mass g
0-100	102-911-01	102-301/302/303/304	1315