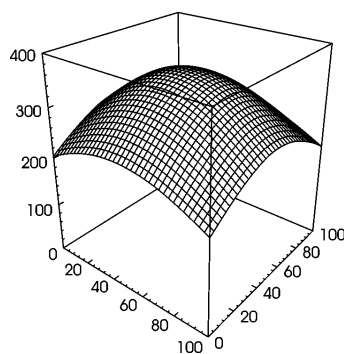


Machine Tube Luminaire

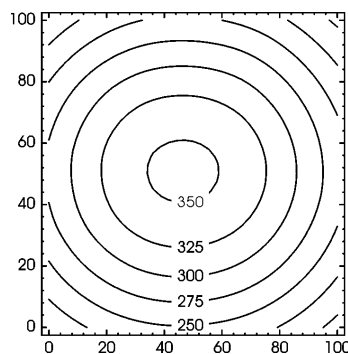


RL70CE- 136 H

connected load	110/230 V; 50/60 Hz
fitted with	1 x compact fluorescent lamp TC-L 36 W neutral white 4000 K
work equipment	electronic ballast
mains lead	connecting terminal
luminaire body material	borosilicate glass
weight (net)	approx. 1,7 kg
fastening	lamp bracket (accessory)
light distribution	direct
system of protection	IP 67
class of protection	I
total length	585 mm
light output	395 mm
outside diameter	70 mm
article no.	C with screwed cable gland 619063001



E_{min}: 192 lx
E_m: 280 lx
E_{max}: 354 lx



measuring conditions: d=100cm

