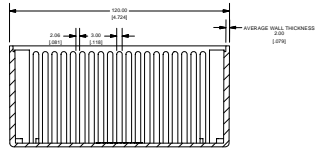


SIDE VIEW OF BOX

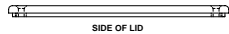
M3 X 0.5 - 6H x 5.75 THREADED HOLES

TOP VIEW OF BOX

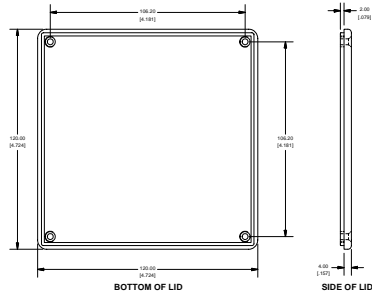
SECTION B-B SCALE 3/4



SECTION A-A SCALE 3/4

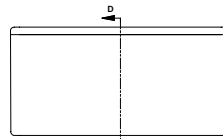


SIDE OF LID



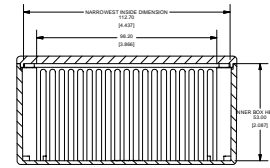
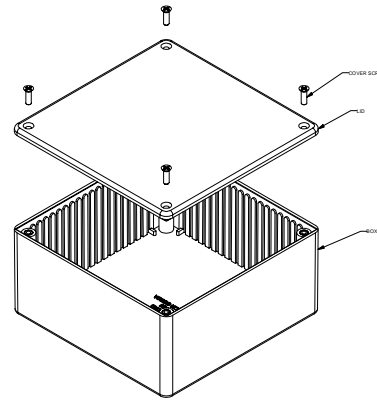
BOTTOM OF LID

SIDE OF LID

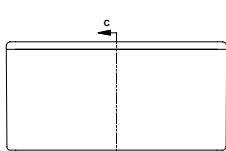


SIDE VIEW OF ASSEMBLY

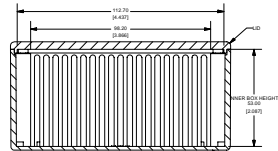
# 1591U



SECTION D-D SCALE 3/4



END VIEW OF ASSEMBLY



SECTION C-C SCALE 3/4

PART NUMBERS		
1591U Enclosures		
Material	Colour	Part Number
ABS	Black	1591UBC
	Blue	1591UBU
	Grey	1591UGY
	Black Shielded	1591RUBK
GP ABS	Black	1591USBK
	Ice Blue	1591UTBU
Translucent Polycarbonate	IR Red	1591UTRD
	Crystal Clear	1591UTCL
Accessories		
Used with ABS and Translucent Polycarbonate Enclosures	Description	Part Number
Used with GP ABS Enclosure	PC Board Card Adapters	See Accessories Section
	Flange Kits	See Accessories Section
	Replacement Screws, nickel plated M3 - 0.5 x 10mm (Pack of 100)	1591MS100
	BeltPocket Clip, w/ nylon screws (insulated to avoid interference) and mounting template	1591MS100BK (Black)
	BeltPocket Clip, w/ nylon screws (insulated to avoid interference) and mounting template	1599CLIP - Black
	Clear Lids - clear, flame retardant polycarbonate - Lid ONLY	1599CLIPGY - Grey
	Clear Lids - clear, flame retardant polycarbonate - Lid ONLY	1591UC
Used with GP ABS Enclosure	PC Board Card Adapters	See Accessories Section
	Flange Kits	See Accessories Section
	BeltPocket Clip, w/ nylon screws (insulated to avoid interference) and mounting template	1599CLIP - Black
	Replacement Screws, self tapping, black oxide, #4 x 0.5, Pack of 100	1599CLIPGY - Grey
Required for use with Enclosures (No Lubrication)	Clear Lids - clear, flame retardant polycarbonate - Lid ONLY	1591UC
	M3 - 0.5 x 10mm Screws	30-40 cH7m
	#4 x 0.5 Screws	30-40 cH7m

