

Telegesis		TG-ETRX2USB-PM-004-104
ETRX2USB		Product Manual 1.04

**ETRX2USB and ETRX2USB-PA USB STICK  
PRODUCT MANUAL**



---

## Table of Contents

<b>1</b>	<b>INTRODUCTION.....</b>	<b>3</b>
1.1	Supported Operating Systems.....	3
<b>2</b>	<b>ABSOLUTE MAXIMUM RATINGS.....</b>	<b>3</b>
<b>3</b>	<b>OPERATING CONDITIONS .....</b>	<b>4</b>
<b>4</b>	<b>OTHER DATA.....</b>	<b>4</b>
<b>5</b>	<b>ETRX2 I/O CONNECTIVITY .....</b>	<b>5</b>
<b>6</b>	<b>FIRMWARE UPGRADES .....</b>	<b>5</b>
<b>7</b>	<b>DRIVER INSTALLATION AND OPERATION .....</b>	<b>6</b>
7.1	Windows 9x/XP/2k Driver Installation .....	6
7.2	Macintosh and Linux drivers .....	9
<b>8</b>	<b>CUSTOM FIRMWARE DEVELOPMENT .....</b>	<b>9</b>
<b>9</b>	<b>ORDERING INFORMATION .....</b>	<b>10</b>
<b>10</b>	<b>TRADEMARKS.....</b>	<b>11</b>
<b>11</b>	<b>DISCLAIMER .....</b>	<b>11</b>
<b>12</b>	<b>CONTACT INFORMATION .....</b>	<b>11</b>
<b>13</b>	<b>REFERENCES.....</b>	<b>11</b>

## 1 Introduction

The ETRX2USB wireless mesh networking USB Stick is effectively an RS232 to USB bridge connected to an ETRX2 ZigBee module. This allows connectivity to a computer's USB port.

The supplied drivers create a virtual COM Port, so that the command line of the ETRX2 can be accessed via any terminal software application.

When using Windows® 9x/XP/2000 the Telegesis Terminal application can be used as described in the Development Kit manual.

### 1.1 Supported Operating Systems

- Windows 98SE
- Windows XP
- Windows 2000
- MAC OS-9
- MAC OS-X
- Linux

## 2 Absolute Maximum Ratings

Parameter	Min.	Max.	Units	Condition
Supply Voltage V <sub>dd</sub>	-0.3	5.25	V	
Voltage on any pin	-0.3	V <sub>dd</sub> +0.3, max 5.8	V	
Storage Temperature range	-40	150	°C	

**Table 1: Absolute Maximum Ratings**

The absolute maximum ratings given above should under no circumstances be violated. Exceeding one or more of the limiting values may cause permanent damage to the device.

### 3 Operating Conditions

Typical values at 5V 25°C.

Parameter	Min.	Typ.	Max.	Units	Condition
Supply Voltage, Vdd	4.75	5	5.25	V	
Supply Current ETRX2USB		62 <sup>1</sup>		mA	TX 3dBm
		55 <sup>1</sup>		mA	TX – 28dBm
		62 <sup>1</sup>		mA	RX
		32 <sup>1,2</sup>		mA	Power Mode 01
		27 <sup>1,2</sup>		mA	Power Mode 02
		26 <sup>1,2</sup>		mA	Power Mode 03
Supply Current ETRX2USB-PA		132		mA	TX
		147		mA	TX boost
		62		mA	RX
		32		mA	Power Mode 01
		27		mA	Power Mode 02
		26		mA	Power Mode 03
Operating ambient temperature range	-20	25	85	°C	

**Table 2: Operating Conditions**

### 4 Other data

For further technical information, including radio certification, see the ETRX2 or ETRX2PA Module Product Manual.

For more information on ZigBee® compliance and the AT command interface firmware please refer to the latest AT command dictionary and the ETRX2 user guide.

<sup>1</sup> During USB suspend the current will drop by 25.6mA in all modes.

<sup>2</sup> Please note that the power consumption in various power modes is firmware and usage dependent.

## 5 ETRX2 I/O Connectivity

The I/Os of the built in ETRX2 are connected as follows:

- I/O1 is connected to the LED (drive I/O1 low to sink LED).
- I/O2 is the CTS input for the ETRX2. Make sure I/O2 is never defined as an output.
- I/O4 is the RTS input for the ETRX2.

**Important Note:** The lines for hardware handshaking are connected, so even when not using hardware handshaking I/O2 should never be defined as an output as this would drive against the incoming CTS signal via a 1k $\Omega$  resistor and increase the current consumption.

Note that if you use the command “AT&F” on the USB stick, I/O1 will revert to being an input and the LED will not light up. To restore its function as a pilot light, use the command “ATS0E=00FA” (with R2xx firmware) or “ATS17=00FA” (with R3xx) followed by a reset.

## 6 Firmware upgrades

The firmware which is loaded onto the embedded ETRX2 Module can be upgraded over the air or via the virtual COM port as described in the Development Kit manual.

Alternatively, access to the SIF programming interface is possible by opening the cover on the side of the ETRX2USB ZigBee USB stick.

## 7 Driver Installation and Operation

The drivers provided will generate a virtual COM port allowing easy access to the serial port of the embedded ETRX2.

To read more about the ETRX2 wireless mesh networking module and its command line interface please read the corresponding documentation which can be found at [www.telegesis.com](http://www.telegesis.com).

### 7.1 Windows 9x/XP/2k Driver Installation

The driver package downloadable from the *Support* → *Software download* page of [www.telegesis.com](http://www.telegesis.com) should be unzipped into a local folder. When executing the file 'TgVCPInstaller.exe' prior to plugging in the ETRX2USB stick an installer will guide you through the steps required for the driver installation. If prompted that the driver has not passed the Windows logo test simply press 'Continue Anyway'.



Figure 1: Found New Hardware Wizard

After insertion of the stick, Windows® will prompt that new hardware has been found. If you have run the 'TgVCPInstaller.exe' Windows will be able to install the driver by automatically as shown in Figure 2. If you have not run 'TgVCPInstaller.exe' you will have to manually point to the directory into which you have unzipped the driver.

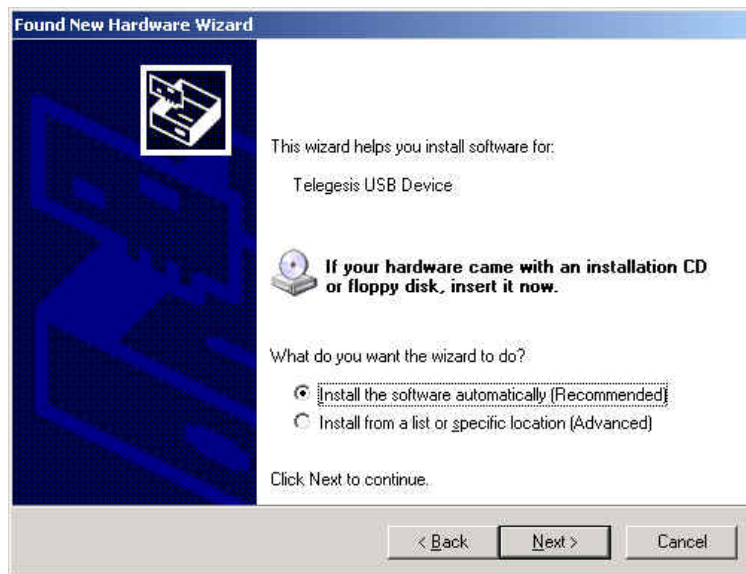


Figure 2: Install software Automatically



Figure 3: Windows Logo Test

Please note that each ETRX2USB has a unique serial number which requires the installation procedure to be repeated with every new ETRX2USB being attached to the computer. This allows multiple ETRX2USB sticks to be used on the same computer at any one time.

In order to find out the identity/number of the virtual com port the stick has been assigned to, please enter the Device Manager under the Windows Computer Management screen (see below) and click on the Ports (COM and LPT) section where you should find the new virtual COM port. By double clicking on the entry of the virtual COM port you can also change the number assigned to the virtual COM port when entering the advanced setup of the device.

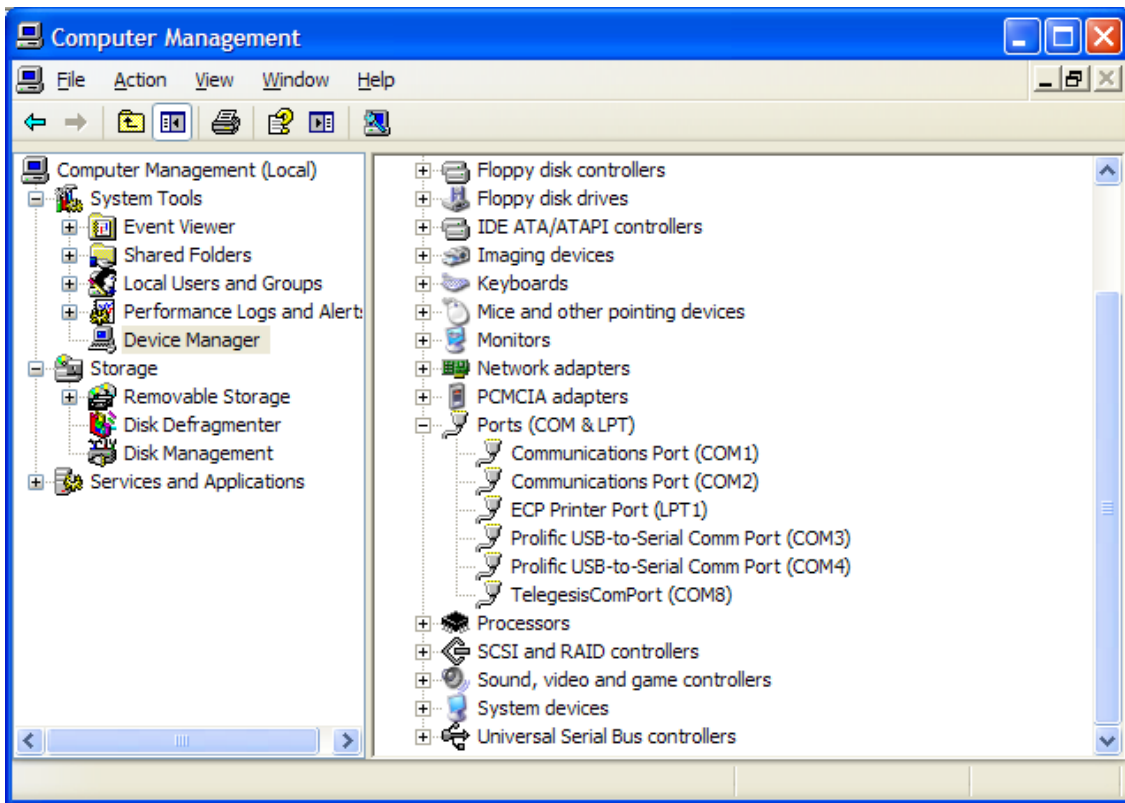


Figure 4. Device Manager

Once the correct COM port has been selected, the Terminal software can be used to control the ETRX2USB stick as per the Development Kit Manual.

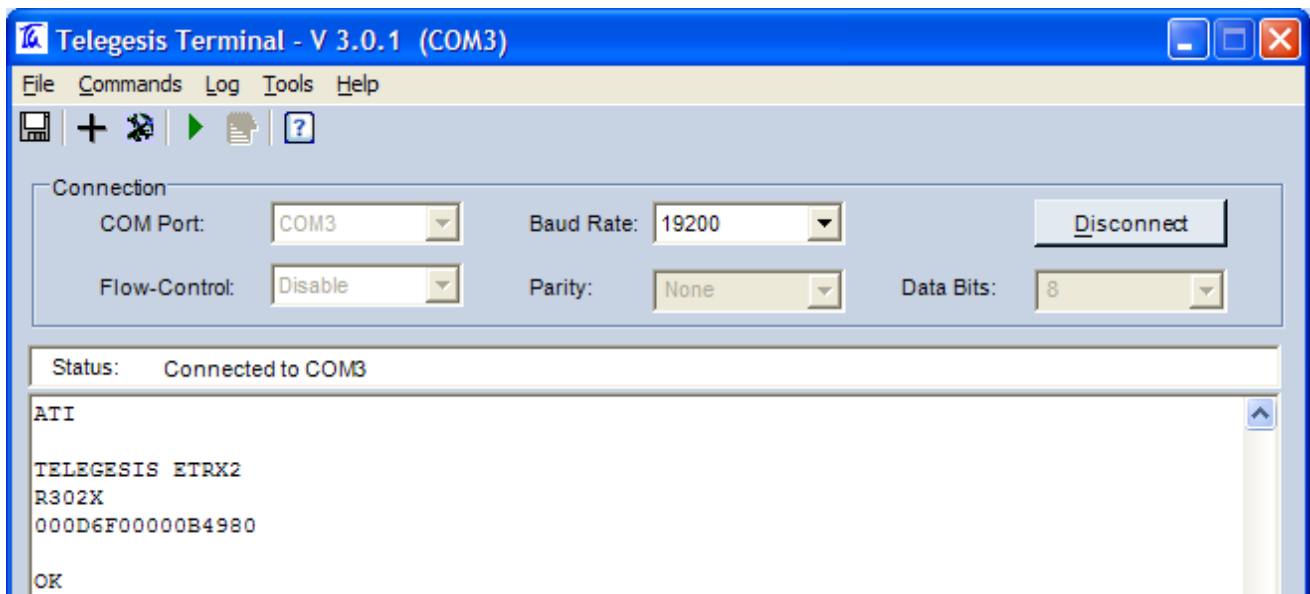


Figure 5. Telegesis Terminal



## 7.2 Macintosh and Linux drivers

A Virtual Com Port driver kit for Mac and Linux can be obtained by following the link on our website on the *Support* → *Software download* page.

In addition, one of our customers has written a Linux driver that will be included in the 2.6.25 kernel. It can be found at [www.kernel.org/pub/linux/kernel/people/gregkh/gregkh-2.6/patches/](http://www.kernel.org/pub/linux/kernel/people/gregkh/gregkh-2.6/patches/). (Note that this is for information only, and this software was developed entirely outside Telegesis.)

## 8 Custom Firmware Development

If you intend to develop custom firmware to go onto the ETRX2USB you need to contact Ember to obtain access to their suite of development tools and their stack. The USB stick contains an ETRX2 module based on the Ember EM250 and a USB-to-serial bridge chip. The ETRX2 communicates via its serial port, so the user's firmware must use the UART of Serial Controller 1. The nRTS and nCTS lines are connected to the USB bridge chip. The LED on the USB stick is driven from ETRX2 pad I/O1, which is EM250 pin GPIO14.

In order to download custom firmware onto the ETRX2, the Ember bootloader can be used or alternatively the ETRX2USB can be directly connected to the Ember InSight Adapter for programming and real time debugging.



## 9 Ordering Information

Ordering/Product Code	Description
ETRX2 *	Module with: <ul style="list-style-type: none"> <li>• AT Style Command Interpreter</li> <li>• Integrated 2.4GHz Antenna</li> <li>• <u>No</u> Harwin Connector</li> </ul>
ETRX2CF *	Compact Flash Card <ul style="list-style-type: none"> <li>• Type II Compact Flash Card Design</li> <li>• AT Style Command Interpreter</li> <li>• Integrated 2.4GHz Antenna</li> <li>• Based on the ETRX2</li> </ul>
ETRX2HR *	Module with: <ul style="list-style-type: none"> <li>• AT Style Command Interpreter</li> <li>• Hirose U.FL Antenna Connector</li> <li>• <u>No</u> Harwin Connector</li> </ul>
ETRX2USB *	USB Stick: <ul style="list-style-type: none"> <li>• AT Style Command Interpreter</li> <li>• Integrated 2.4GHz Antenna</li> <li>• Based on the ETRX2</li> </ul>

**Notes:**

- Customers' PO's must state the Ordering/Product Code.
- There is no "blank" version of the ETRX2 Module available. All Modules carry both the Ember Stack and the Telegesis AT style Command Layer. Where customers wish to add their own firmware they can erase and write it to the flash memory of the Ember EM250.
- Please contact Telegesis if you require additional AT style commands or specific integration assistance.

Table 11. Ordering Information

## 10 Trademarks

All trademarks, registered trademarks and products names are the sole property of their respective owners.

## 11 Disclaimer

Product and Company names and logos referenced may either be trademarks or registered trademarks of their respective companies. We reserve the right to make modifications and/or improvements without prior notification. All information is correct at time of issue. Telegesis (UK) Ltd does not convey any license under its patent rights or assume any responsibility for the use of the described product

## 12 Contact Information

Website: [www.telegesis.com](http://www.telegesis.com)  
E-mail: [sales@telegesis.com](mailto:sales@telegesis.com)

Telegesis (UK) Limited  
Marlow Business Centre  
84 Station Road  
Marlow  
Bucks. SL7 1NX  
UK

Tel: +44 (0)1628 894347  
Fax: +44 (0)1628 894333

## 13 References

Telegesis - [www.telegesis.com](http://www.telegesis.com)  
Ember - [www.ember.com](http://www.ember.com)