

## FEATURES AND SPECIFICATIONS

### Features and Benefits

- Sizes 3 to 30 circuits
- Staggered solder tails, 3.50mm (.138") long
- 5597 accommodates FFC/FPC 0.30mm (.012") thick

### Reference Information

Packaging: Tray  
Designed In: Millimeters

### Electrical

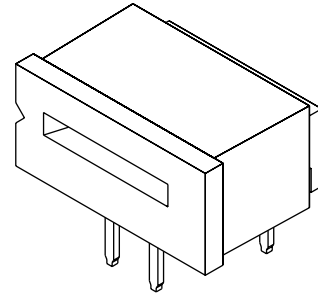
Voltage: 200V  
Current: 1.0A  
Contact Resistance: 20mΩ max.  
Dielectric Withstanding Voltage: 500V AC/1 min.  
Insulation Resistance: 500 MΩ min.

### Physical

Housing: PBTP, UL 94V-0  
Actuator: PBTP, UL 94V-0  
Contact: Phosphor Bronze  
Plating: Tin  
Temperature: -20 to +80°C

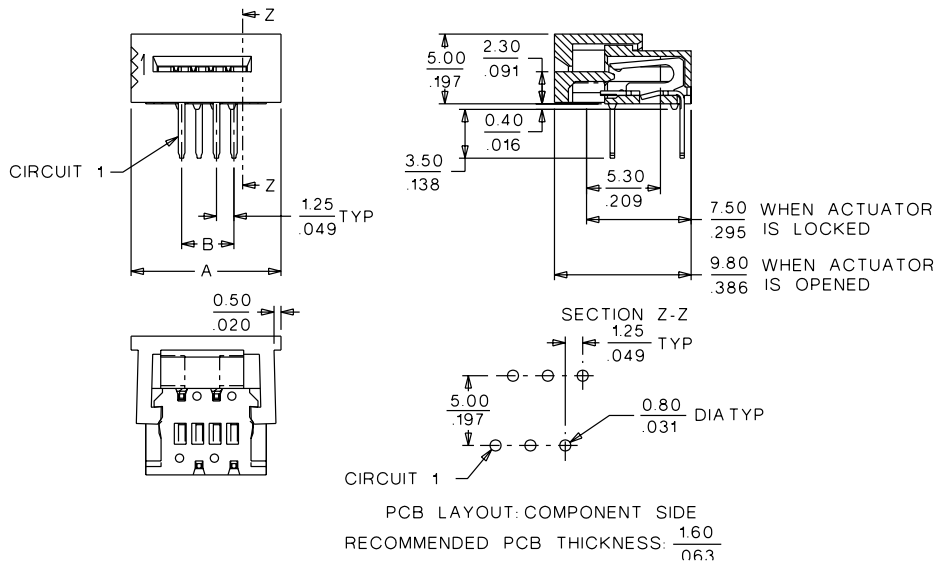
# molex® 1.25mm (.049") Pitch FFC/FPC Connector

## 5597-NAPB Right Angle, ZIF



FFC/FPC Connectors

**F**



## ORDERING INFORMATION AND DIMENSIONS

Circuits	Order No.	Dimension	
		A	B
3	39-51-3033	9.50 (.374)	2.50 (.098)
4	39-51-3043	10.75 (.423)	3.75 (.147)
5	39-51-3053	12.00 (.472)	5.00 (.196)
6	39-51-3063	13.25 (.522)	6.25 (.246)
7	39-51-3073	14.50 (.571)	7.50 (.295)
8	39-51-3083	15.75 (.620)	8.75 (.344)
9	39-51-3093	17.00 (.669)	10.00 (.393)
10	39-51-3103	18.25 (.719)	11.25 (.442)
11	39-51-3113	19.50 (.768)	12.50 (.492)
12	39-51-3123	20.75 (.817)	13.75 (.541)
13	39-51-3133	22.00 (.866)	15.00 (.590)
14	39-51-3143	23.25 (.915)	16.25 (.639)
15	39-51-3153	24.50 (.965)	17.50 (.688)
16	39-51-3163	25.75 (1.014)	18.75 (.738)

Circuits	Order No.	Dimension	
		A	B
17	39-51-3173	27.00 (1.063)	20.00 (.787)
18	39-51-3183	28.25 (1.112)	21.25 (.836)
19	39-51-3193	29.50 (1.161)	22.50 (.885)
20	39-51-3203	30.75 (1.211)	23.75 (.935)
21	39-51-3213	32.00 (1.260)	25.00 (.984)
22	39-51-3223	33.25 (1.309)	26.25 (1.033)
23	39-51-3233	34.50 (1.358)	27.50 (1.082)
24	39-51-3243	35.75 (1.407)	28.75 (1.131)
25	39-51-3253	37.00 (1.475)	30.00 (1.181)
26	39-51-3263	38.25 (1.506)	31.25 (1.230)
27	39-51-3273	39.50 (1.555)	32.50 (1.279)
28	39-51-3283	40.75 (1.604)	33.75 (1.328)
29	39-51-3293	42.00 (1.654)	35.00 (1.377)
30	39-51-3303	43.25 (1.703)	36.25 (1.427)

Note: For cable specification dimensions, see cable pages at end of section