



ITT

Electronic Components

## Cannon Mini RF Switching Connector



*Engineered for life*

# Mini RF Switching Connector

Mini RF connectors are the ideal solution for customers producing devices that require verification of antenna or circuit board performance. They are specifically designed for use with portable terminal interfaces and the inspection of microwave boards used at frequencies of up to 6 GHz. The specially incorporated flared interface cone not only allows the user to snap on a bench test adaptor but also allows high mating cycles on the accessory connector.

## Features & Benefits of the Design

- Small size / low profile saving space on PCB
- High mating cycles on accessory port
- Switchable
- High force on the switch providing more robust connection
- Robust design
- Latching mechanism for ease-of-use during bench testing
- Compatible with lead free soldering
- Designed for pick and place
- Cradle interface incorporates patented ball
  - enables angular misalignment without loss to performance
- Compliant with WEEE and RoHS directives

## Accessories

Ball Nose Cradle connector typical for car kit applications and Low Profile Jump Cable typical for board-to-board system connection.

## Applications

- Mobile handset
- Other wireless (PDA, PPC, Gaming)
- Portable phones
- Network carriers - base stations
- Automotive - key fob / locking
- Industrial - transportation equipment
- Cable houses - board-to-board cable interconnect
- Electronic measuring instrumentation / equipment
- GPS - navigation systems (ETC)
- Wireless LAN

And any small devices requiring verification of antenna / circuit performance.

<b>Mini RF Series</b>	120220-0180 Accessory connector 120220-0190 Test Port
Base materials	Copper alloy - Shell LCP plastic - Insulator Beryllium copper - Contacts
Plating	120220-0180 - Gold over nickel 120220-0190 - Matt tin finish over nickel

### ELECTRICAL

Frequency	0.01 - 6 GHz
Impedance	50Ω nominal
VSWR	≤ 1.2:1
Insertion loss	unmated condition <0.1 dB mated condition <0.5 dB
Dielectric withstanding voltage	100 VAC (150 V peak)
Contact resistance	200mΩ max (initial)
Power	2 watts

### MECHANICAL

Mating Cycles	120220-0180 (with cradle connector) up to 10,000 mating cycles
	120220-0190 (with test adaptor) 100 mating cycles

### ENVIRONMENTAL

Operating temperature	-40 to 85°C
Humidity	operable in 95% RH temp +40°C
Solder systems	Infrared and hot air reflow suitable for lead-free
Vibration	In accordance IEC 68-2-64
Shock	In accordance to IEC 68-2-27, 100 g

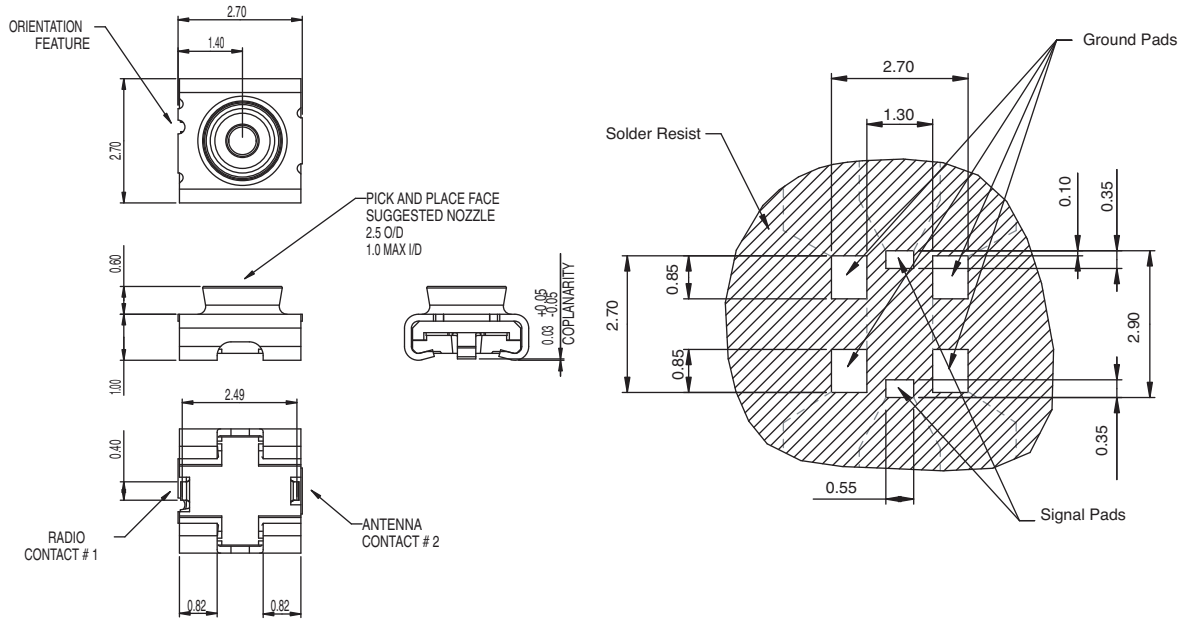
### PACKAGING

Packaging style	Tape and reel to EIA-481
Packaging size	8000 per reel
Small reel	2000 per reel

A float mount production test adaptor is available by request.

120220-0180  
Cradle Interface

120220-0190  
Test Port Interface



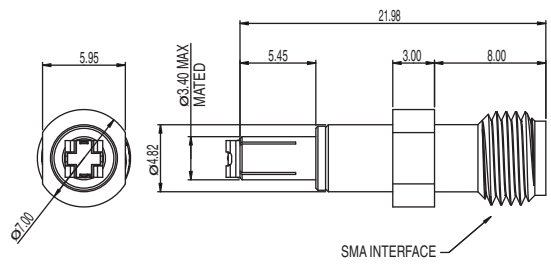
## Accessories



120220-0175  
Snap-on Bench Test Adaptor



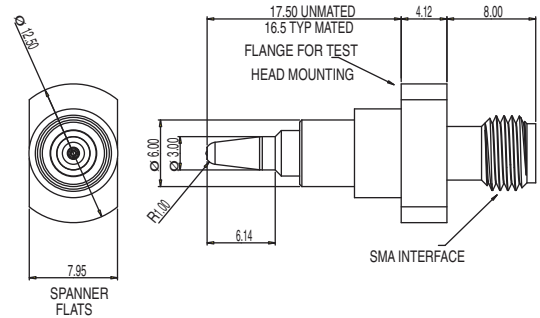
Snap-on mated



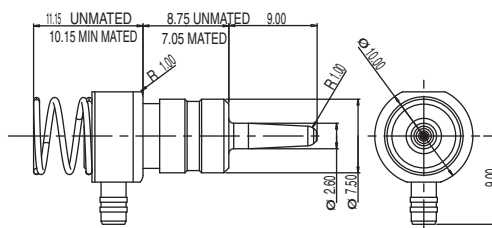
120220-0176  
Ball Nose Production Test Adaptor



Ball Nose mated



120220-0177  
Cradle Connector





# ITT

## Mini RF Customer Support Locations

### AMERICAS

100 New Wood Road  
Watertown, CT 06795  
Tel: 860.945.0206  
Toll Free: 800.683.7666  
Fax: 860.945.0303

### ASIA

Unit 901 & 912, West Tower,  
Shun Tak Center  
168-200 Connaught Road  
Central, Hong Kong  
Tel: +852.2732.2720  
Fax: +852.2732.2919

### EUROPE

Jays Close, Viables Estate  
Basingstoke, Hants, RG22 4BA  
Tel: +44.1256.311850  
Fax: +44.1256.332214