

QUICKTRONIC® PROFESSIONAL T8
ECG for T8/Ø26mm fluorescent lamps
QTP8 1x36
QTP8 2x36

Technical information

Edition: September 2006




Subject to change

Features:

- 50,000 hours lifetime with 10% max. failure rate at $t_c = 75^\circ\text{C}$ max.
- **Up to 100,000 hours lifetime for $t = 65^\circ\text{C}$ tc-point**
- Reliable lamp ignition between $-25^\circ\text{C} \dots +55^\circ\text{C}$
- Lamp start with optimised filament preheating within 2 sec.
- Suitable for luminaires of PC I + II
- Constant light output for $U_N = 198\text{V} \dots 264\text{V}$
- CELMA energy classification EEI = A2
- Automatic safety shut down at lamp failure
- Automatic restart after lamp replacement
- Suitable for emergency installations (DC operation)



Technical data:

Reference	QTP8 1x36	QTP8 2x36
Lamp :	L 36W L 38W	2 x L 36W 2 x L 38W
HF lamp wattage [W]	32 32	2x32 2x32
System wattage [W]	35	71
Line current [A]	0,16	0,31
Luminous flux at 25°C [lm]	3200	2x3200
Max. cable diameter für IDC contact [mm ²]	„s ¹⁾ “: 0,5; „s-ff ²⁾ “: 0,75	
Max. cable diameter for push-in contact [mm ²]	„s ¹⁾ “: 0.5...1.0*	
Starting time:	t < 2 sec..	
Line voltage:	230-240 V	
Voltage range (AC):	198-264 V	
Voltage range (DC)	154-276 V; min. 198 V for lamp ignition	
Line frequency:	50-60 Hz	
Operating frequency:	45-60 kHz	
Inrush current	$I_p = 17\text{ A}; T_H = 155\ \mu\text{s}$	$I_p = 20\text{ A}; T_H = 210\ \mu\text{s}$
Max. number of ECG, circuit breaker 10A, Char. C	25	17
Max. number of ECG, circuit breaker 16A Char.B / Char. C	41 / 69	28 / 47
Electrical strength:	300 V → permanent	
Power factor:	$\lambda = 0,96$	$\lambda = 0,98$
Ambient temperature t_a :	-25 °C to +55 °C	
Measuring point temperature t_c :	max. +75 °C	
U-OUT	380 V	380 V
Design (l x w x h):	360 x 30 x 30 mm	423 x 30 x 30 mm
Distance mounting holes:	350 mm	415 mm
Weight:	270g	415g
Safety:	acc. to EN 61347-2-3 / IEC 61347-2-3	
Radio interference:	acc. to EN 55015 / CISPR 15	
Harmonic content:	acc. to EN 61000-3-2 / IEC 61000-3-2	
Immunity:	acc.to EN 61547 / IEC 61547	
Packaging unit:	20 pieces	
Approval marks:	  	

¹⁾„s“ = stranded wire

²⁾„s-ff“ = stranded-flexible wire

QUICKTRONIC® PROFESSIONAL T8
ECG for T8/Ø26mm fluorescent lamps
QTP8 1x36
QTP8 2x36

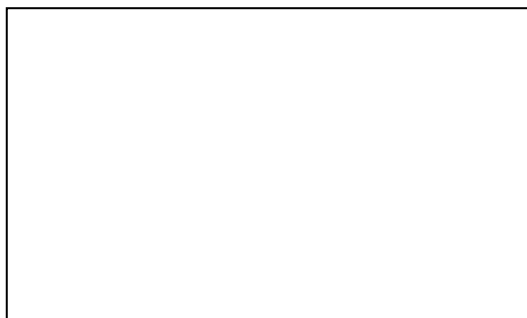
Technical information

Edition: September 2006

Subject to change

Product:

QTP8 1x36



QTP8 2x36

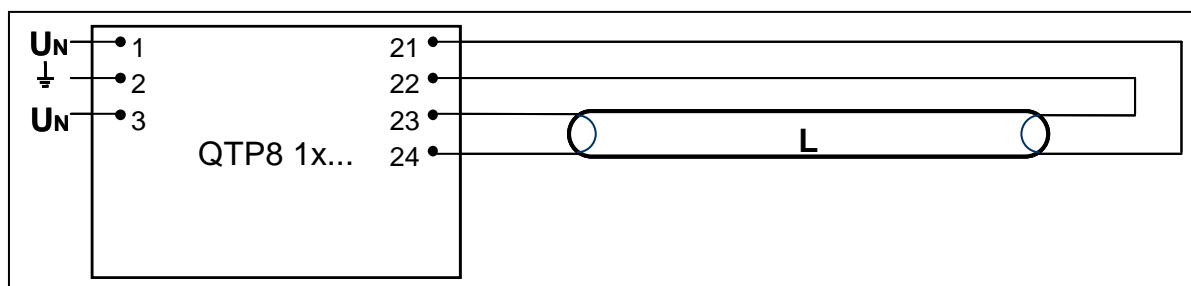


Product number:

Reference	EAN 10	EAN 40
QTP8 1x36	4008321 131621	4008321 131638
QTP8 2x36	4008321 131645	4008321 131652

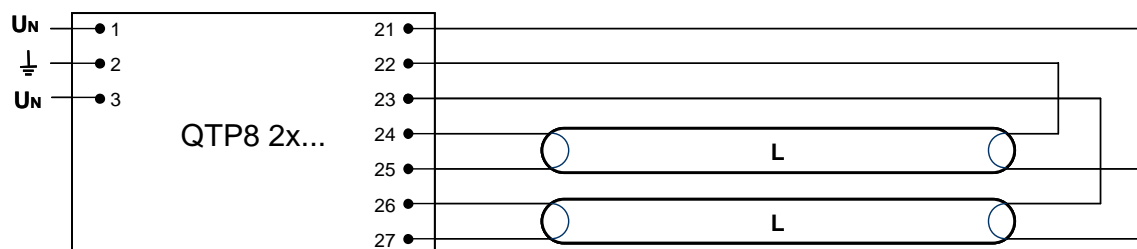
Lamp wiring:

QTP8 1x36



Max. cable length between ECG and lamp: 2.0 m (PIN 21; 22); 1.5 m (PIN 26, 27)

QTP8 2x36



Max. cable length between ECG and lamp: 3.0 m (PIN 21, 22, 23); 1.5 m (PIN 24, 25, 26, 27)