

QUICKTRONIC® T8
ECG for T8/Ø26mm fluorescent lamps
QT8 1x70
QT8 2x70

Technical information

Edition: December 2006




Subject to change

Features:

- 30,000 hours lifetime with 10% max. failure rate at **tc = 70°C max.**
- **Up to 50,000 hours lifetime for t = 60°C tc-point**
- Reliable lamp ignition between -15°C...+50°C
- Lamp start with optimised filament preheating within 2 sec.
- Suitable for luminaires of PC I
- CELMA energy classification EEI = A3
- Automatic safety shut down at lamp failure
- Automatic restart after lamp replacement



Technical data:

Reference	QT8 1x70	QT8 2x70
Lamp:	L 70W	2 x L 70W
HF Lamp wattage [W]	60	2x60
System wattage [W]	67	134
Line current [A]	0.29	0.56
Luminous flux at 25°C [lm]		
Max. cable diameter für IDC contact [mm ²]	„s1)“: 0.5; „s-f2)“: 0.75	
Max. cable diameter for push-in contact [mm ²]	„s1)“: 0.5...1.0*	
Starting time	t < 2 sec.	
Line voltage	230-240 V	
Voltage range (AC)	211-254 V	
Line frequency	50 Hz	
Operating frequency	> 40 kHz	
Inrush current	I _p = 24 A; T _H = 220 µs	I _p = 28 A; T _H = 230 µs
Max. number of ECG, circuit breaker 10A, Char. C	11	8
Max. number of ECG, circuit breaker 16A Char.B / Char. C	19 / 31	13 / 20
Electrical strength	280 V	
Power factor	λ = 0.98	λ = 0.98
Ambient temperature t _a :	-15 °C to +50 °C	
Measuring point temperature t _c :	max. +70 °C	
U-OUT	430 V	430 V
Dimensions (l x w x h):	360 x 30 x 30 mm	423 x 30 x 30 mm
Distance mounting holes:	350 mm	415 mm
Weight	270g	415g
Safety	acc. to EN 61347-2-3 / IEC 61347-2-3	
Radio interference	acc. to EN 55015 / CISPR 15	
Harmonic content	acc. to EN 61000-3-2 / IEC 61000-3-2	
Immunity	acc. to EN 61547 / IEC 61547	
Packaging units	20 pieces	
Approval marks	  	

¹⁾„s“ = stranded wire

²⁾„s-f“ = stranded-flexible wire

QUICKTRONIC® T8
ECG for T8/Ø26mm fluorescent lamps
QT8 1x70
QT8 2x70

Technical information

Edition: December 2006

Subject to change

Product:



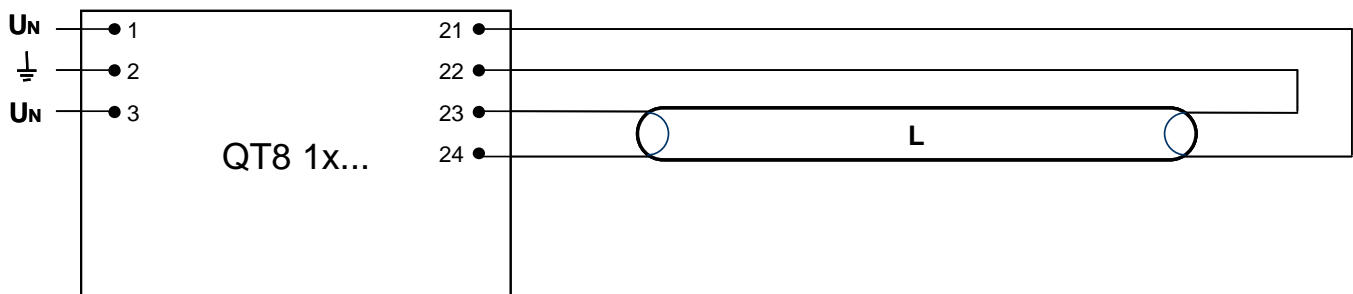
Product number:

Reference	EAN 10	EAN 40*
QT8 1x70	4008321 154774	4008321 154781
QT8 2x70	4008321 154798	4008321 154804

*only packaging units no partial quantity

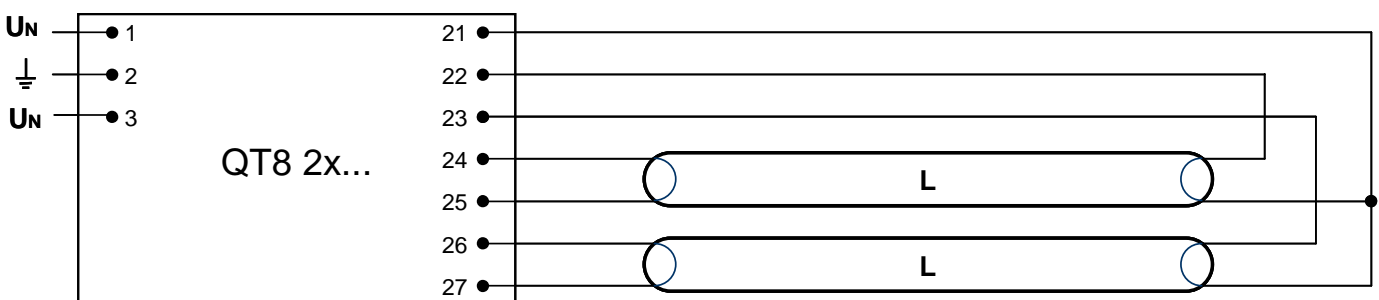
Lamp wiring:

QT8 1x70



Max. cable length between ECG and lamp: 2.0 m (PIN 21; 22); 1.0 m (PIN 23, 24)

QT8 2x70



Max. cable length between ECG and lamp: 2.0 m (PIN 21; 22; 23); 1.0 m (PIN 24, 25, 26, 27)

