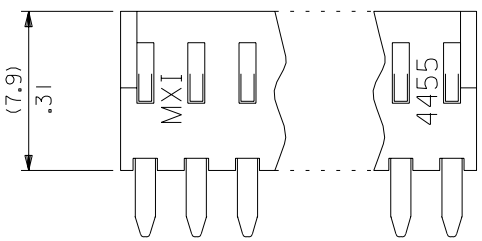
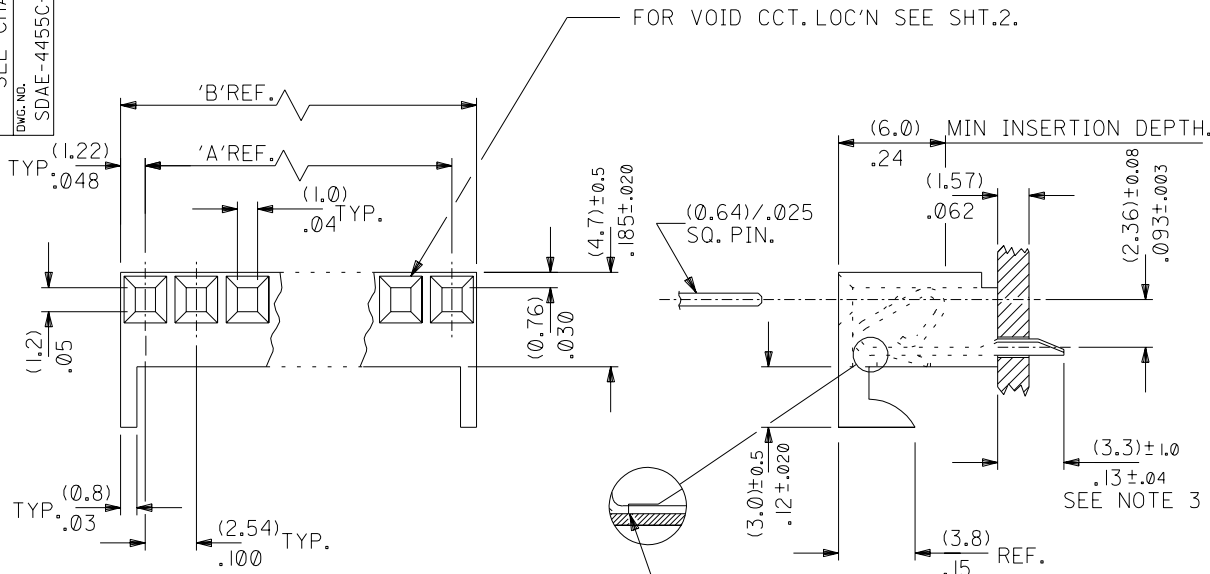
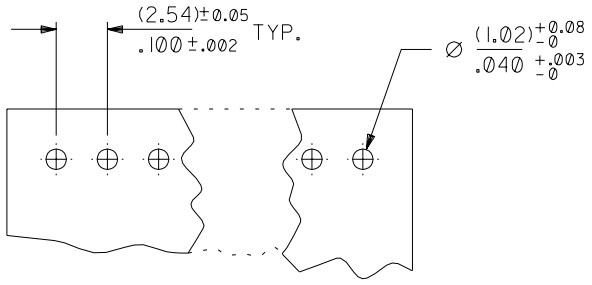


PART NO. SEE CHART
 DWG. NO. SDAE-4455C-NCAA-*



- NOTES:-
- TWO K-K (2.54)/.100 ASSEMBLIES MAY BE STACKED END TO END ON (2.54)/.100 CENTRE TO CENTRE PROGRESSION.
 - TERMINALS MUST CONFORM TO MOLEX SOLDERABILITY SPEC. No.152
 - THIS DIMENSION TO BE CHECKED WITH TERMINAL INSERTED AGAINST FORWARD STOP.

MATERIAL:- HOUSING, NYLON 94V-0.
 TERMINAL , PHOS.BR. HOT TIN DIP 1.0-2.5um (.000040"- .000100")



RECOMMENDED P.C. BOARD HOLE LAYOUT

FOR PREVIOUS DRAWING ISSUES SEE MRI.

CHANGED PLATING DESCRIPTION NEW BORDER ADDED EC NO. E2004-0036 DRWN: PSHEAHAN 03/07/17 CHK: APPR:	DESCRIPTION	QUALITY SYMBOLS	GENERAL TOLERANCES: (UNLESS SPECIFIED)		SCALE	DESIGN UNITS	THIRD ANGLE PROJECTION	DIMENSIONS:	SHT	REV
REV	MAJOR	CRITICAL	mm	INCH	4:1	<input checked="" type="checkbox"/> mm <input type="checkbox"/> INCH	<input checked="" type="checkbox"/> mm <input type="checkbox"/> INCH <input type="checkbox"/> mm ONLY			
			4 PLACES ±0.	±.						
			3 PLACES ±0.	±.010						
			2 PLACES ±0.25	±.014						
			1 PLACE ±0.35	±.						
			ANGULAR: ± °							
			DRAFT WHERE APPLICABLE MUST REMAIN WITHIN DIMENSIONS							

PART No.	ENG No.	No. OF CKTS.	DIMn. 'A'	DIMn. 'B'
38-00-1422	AE-4455C-2CAA	2	(2.54)/.100	(4.98)/.196
-1423	-3CAA	3	(5.08)/.200	(7.52)/.296
-1424	-4CAA	4	(7.62)/.300	(10.06)/.396
-1425	-5CAA	5	(10.16)/.400	(12.60)/.496
-1426	-6CAA	6	(12.70)/.500	(15.14)/.596
-1427	-7CAA	7	(15.24)/.600	(17.68)/.696
-1428	-8CAA	8	(17.78)/.700	(20.22)/.796
-1429	-9CAA	9	(20.32)/.800	(22.76)/.896
-1430	-10CAA	10	(22.86)/.900	(25.30)/.996
-1431	-11CAA	11	(25.40)/1.000	(27.84)/1.096
-1432	-12CAA	12	(27.94)/1.100	(30.38)/1.196
-1433	-13CAA	13	(30.48)/1.200	(32.92)/1.296
-1434	-14CAA	14	(33.02)/1.300	(35.46)/1.396
-1435	-15CAA	15	(35.56)/1.400	(38.00)/1.496
-1436	-16CAA	16	(38.10)/1.500	(40.54)/1.596
-1437	-17CAA	17	(40.64)/1.600	(43.08)/1.696
-1438	-18CAA	18	(43.18)/1.700	(45.62)/1.796
-1439	-19CAA	19	(45.72)/1.800	(48.16)/1.896
-1440	-20CAA	20	(48.26)/1.900	(50.70)/1.996
-1441	-21CAA	21	(50.80)/2.000	(53.24)/2.096
-1442	-22CAA	22	(53.34)/2.100	(55.78)/2.196
-1443	-23CAA	23	(55.88)/2.200	(58.32)/2.296
-1444	-24CAA	24	(58.42)/2.300	(60.86)/2.396
38-00-1445	AE-4455C-25CAA	25	(60.96)/2.400	(63.40)/2.496
38-00-1479	AE-4455C-30CAA	30	(73.66)/2.900	(76.10)/2.996

PRE-RELEASE REFERENCE USE ONLY

DRAWN BY & DATE WGF 82/11/01		TITLE: CONNECTOR, SQ. WIRE, K-K, CAT-EARS, STRAIGHT, (2.54)/.100	
CHECKED BY & DATE		MATERIAL NO. SEE CHART	
APPROVED BY & DATE		DRAWING NO. SDAE-4455C-NCAA-*	
CAD FILENAME S4455CAA.DGN		SHEET NO. IOF2	
THIS DRAWING CONTAINS INFORMATION THAT IS PROPRIETARY TO MOLEX INCORPORATED AND SHOULD NOT BE USED WITHOUT WRITTEN PERMISSION.			