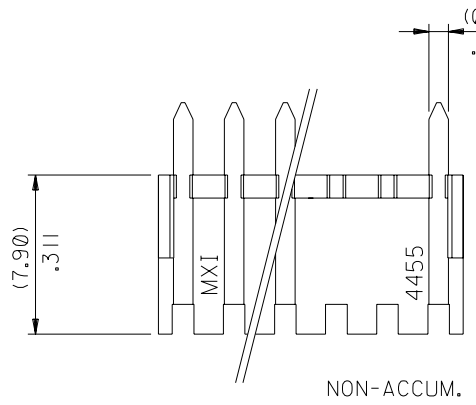
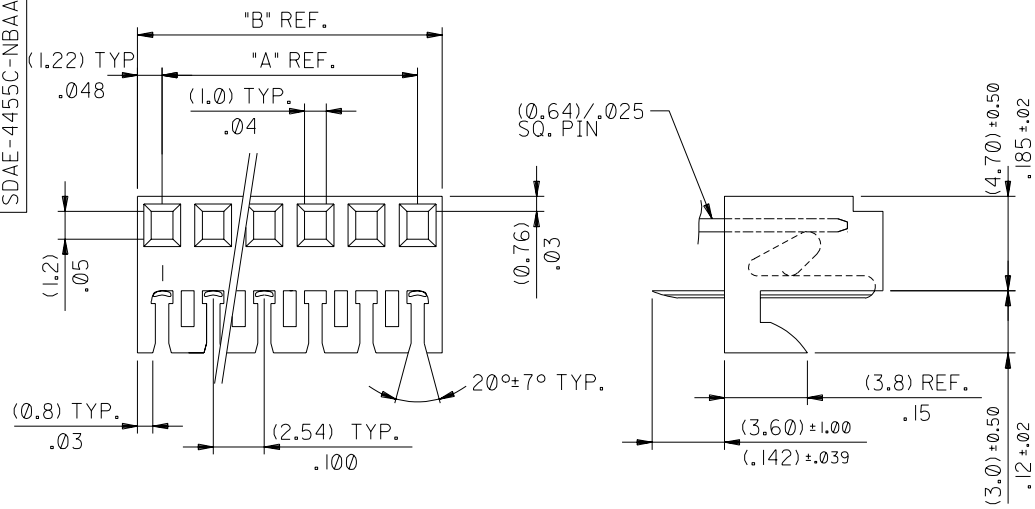
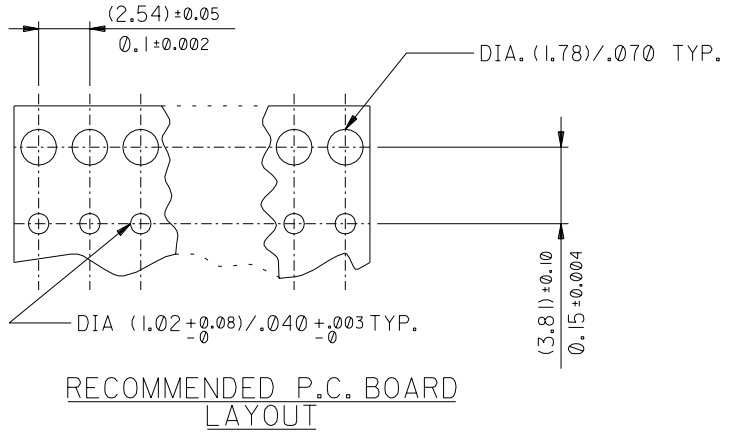


PART NO. SEE CHART
 DWG. NO. SDAE-4455C-NBAA



- NOTES:-
 1. TWO K-K .100 ASSEMBLIES MAY BE STACKED END TO END ON (2.54)/.100 CENTRE TO CENTRE PROGRESSION.
 2. TERMINALS MUST CONFORM TO MOLEX SOLDERABILITY SPEC. NO. 152.



PART NO.	ENG. NO.	NO. OF CKTS	DIM. "A"	DIM "B"
38-00-1392	AE-4455C-2BAA	2	(2.54)/.100	(4.98)/.196
38-00-1393	AE-4455C-3BAA	3	(5.08)/.200	(7.52)/.296
38-00-1394	AE-4455C-4BAA	4	(7.62)/.300	(10.06)/.396
38-00-1395	AE-4455C-5BAA	5	(10.16)/.400	(12.60)/.496
38-00-1396	AE-4455C-6BAA	6	(12.70)/.500	(15.14)/.596
38-00-1397	AE-4455C-7BAA	7	(15.24)/.600	(17.68)/.696
38-00-1398	AE-4455C-8BAA	8	(17.78)/.700	(19.53)/.796
38-00-1399	AE-4455C-9BAA	9	(20.30)/.800	(22.76)/.896
38-00-1400	AE-4455C-10BAA	10	(22.86)/.900	(25.30)/.996
38-00-1401	AE-4455C-11BAA	11	(25.40)/1.000	(27.84)/1.096
38-00-1402	AE-4455C-12BAA	12	(27.94)/1.100	(30.38)/1.196
38-00-1403	AE-4455C-13BAA	13	(30.48)/1.200	(32.92)/1.296
38-00-1404	AE-4455C-14BAA	14	(33.02)/1.300	(35.46)/1.396
38-00-1405	AE-4455C-15BAA	15	(35.56)/1.400	(38.00)/1.496
38-00-1406	AE-4455C-16BAD	16	(38.10)/1.500	(40.54)/1.596
38-00-1407	AE-4455C-17BAA	17	(40.64)/1.600	(43.08)/1.696
38-00-1408	AE-4455C-18BAA	18	(43.18)/1.700	(45.62)/1.796
38-00-1409	AE-4455C-19BAA	19	(45.72)/1.800	(48.16)/1.896
38-00-1410	AE-4455C-20BAA	20	(48.26)/1.900	(50.70)/1.996
38-00-1411	AE-4455C-21BAA	21	(50.80)/2.000	(53.24)/2.096
38-00-1412	AE-4455C-22BAA	22	(53.34)/2.100	(55.78)/2.196
38-00-1413	AE-4455C-23BAA	23	(55.88)/2.200	(58.32)/2.296
38-00-1414	AE-4455C-24BAA	24	(58.42)/2.300	(60.86)/2.396
38-00-1415	AE-4455C-25BAA	25	(60.96)/2.400	(63.40)/2.496

MATERIAL:- HOUSING, NYLON 94V-0, TERMINAL, PHOS. BRONZE
 HOT TIN DIP (1.0-2.5UM)/.000040"-0.000100"

CHANGED PLATING DESCRIPTION EC NO. E2004-0036 DRWN: PSHEAHAN 03/07/17 CHK: / / / APPR: / / / REV	QUALITY SYMBOLS MAJOR = CRITICAL =	GENERAL TOLERANCES: (UNLESS SPECIFIED) mm INCH 4 PLACES ±0. ±0.10 3 PLACES ±0. ±0.14 2 PLACES ±0.25 ±. 1 PLACE ±0.35 ±. ANGULAR: ± 1/2°	SCALE 4 : 1 DESIGN UNITS <input checked="" type="checkbox"/> mm <input checked="" type="checkbox"/> INCH DRAWN BY & DATE O.COSTEL 98/03/04 CHECKED BY & DATE MOHALLOR 98/08/26 APPROVED BY & DATE MWILHITE 98/08/26 CAD FILENAME S45CNBAA.DGN	DIMENSIONS: <input checked="" type="checkbox"/> mm <input type="checkbox"/> INCH <input type="checkbox"/> mm <input type="checkbox"/> INCH ONLY THIRD ANGLE PROJECTION	SHT REV REVISE ON CAD ONLY
	TITLE: CONNECTOR, SQ. WIRE, K-K, CAT EARS, BOTTOM ENTRY, (2.54)/.100				
	MOLEX INCORPORATED				
	DRAFT WHERE APPLICABLE MUST REMAIN WITHIN DIMENSIONS			THIS DRAWING CONTAINS INFORMATION THAT IS PROPRIETARY TO MOLEX INCORPORATED AND SHOULD NOT BE USED WITHOUT WRITTEN PERMISSION.	