



testo 465

Affordable, non-contact, optical rpm measurement

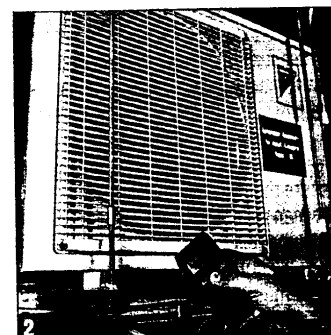
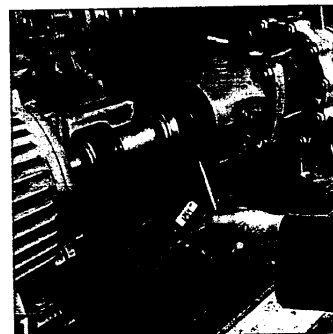
Using **testo 465**, rpm can be easily measured optically and without contact. Simply attach a reflector to the object to be measured and then point the visible, red modulated light beam at the reflector and then measure (max. distance = 350 mm).

- Affordable
- Easy one-hand operation
- Max/Min function
- Saves mean/max. value and last value when switched off
- Auto Off

Sensor	Optically with modulated light beam
Meas. range	1 to 99,999 rpm
Distance from object	Max. 350 mm (14 inches)
Accuracy	±0.02 % of measured value (±1 digit)
Operating temperature	0 to +50 °C
Storage temperature	-20 to +70 °C
Battery	2 x 1.5 V AA
Auto Off	30 seconds (average/max/last value measured are saved)
Dimensions	144 x 58 x 20 mm
Weight	145 g
Warranty	1 year

Non-contact measurement of rpm in industry:

- rpm measurement on shafts, e.g. in a filter pump (Fig. 1)
- rpm measurement in rollers, e.g. paper web
- rpm measurement in fans and ventilators (Fig. 2)
- Measurements on turbines and pumps (Fig. 3)
- etc. ...



testo 465 set
includes case,
reflectors, batteries,
Instruction manual

Ordering data for testo 465

Description

testo 465 set, in a practical case (plastic), includes reflectors, batteries and Instruction manual

Reflectors, self-adhesive (pack of 5)