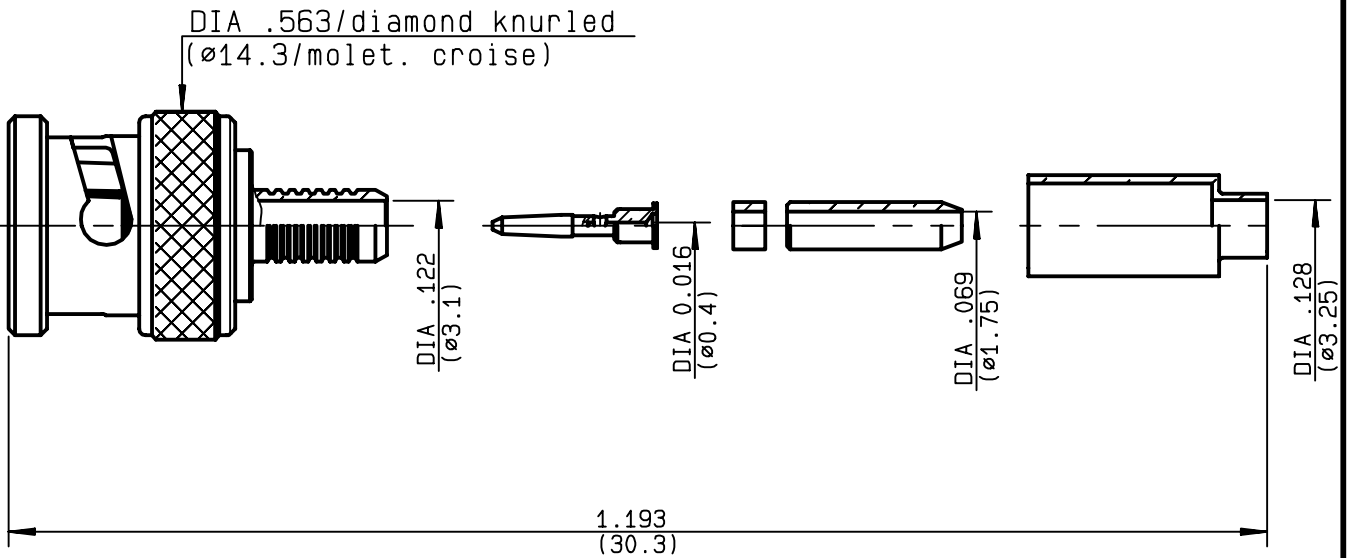


**STRAIGHT PLUG CRIMP TYPE
CABLE 2.6/75 S**

R142.076.000
SERIES BNC 75



NOMINAL IMPEDANCE	75 Ω	CABLES : RG 179
FREQUENCY RANGE	0-1.5 GHz	RG 187
TEMPERATURE RATING	-65/+165 °C	
V.S.W.R	1.30 + 0 x F(GHz)Maxi	
RF INSERTION LOSS	0.115 √F(GHz) dB Maxi	
VOLTAGE RATING	335 Veff Maxi	
DIELECTRIC WITHSTANDING VOLTAGE	1000 Veff Mini	
INSULATION RESISTANCE	5000 MΩMini	OTHERS CHARACTERISTICS
HERMETIC SEAL	NA Atm.cm ³ /s	CABLE RETENTION 40 N Mini
LEAKAGE (pressurized only)	NA	CENTER CONTACT RETENTION
MECHANICAL DURABILITY	500 Cycles	Axial force - mating end 27 N Mini
WEIGHT	10 gr	Axial force - opposite end 27 N Mini
SPECIFICATION		Torque NA cm.N Mini
		RECOMMENDED TORQUES
		Mating NA cm.N
		Panel nut NA cm.N
		Clamp nut NA cm.N

CONNECTOR PARTS	MATERIALS	FINISH	(all values are given in micrometers)
BODY	BRASS	NICKEL 2	
OUTER CONTACT			
CENTER CONTACT	BRASS	GOLD 0.5 OVER NICKEL 2	
INSULATOR	PTFE	-	
GASKET	SILICONE RUBBER	-	
OTHERS PIECES	BRASS	NICKEL 2	

ISSUE 9904G00	CREATION DATE 19/09/1983	FILE PART-NUMBER
-------------------------	------------------------------------	------------------



Connect to the future

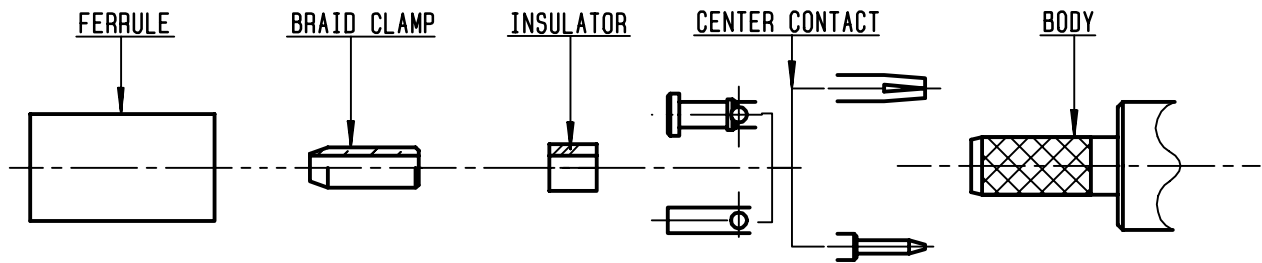
The information given here is subject to change without notice.
Design changes may be in order to improve the product .

PICTON



R142.076.000

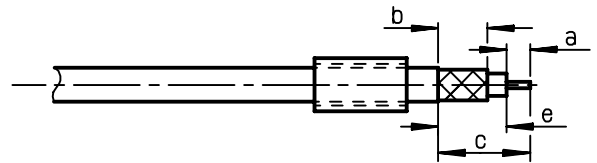
ISSUE 9904600 SERIES BNC 75



①

Slide ferrule onto cable .
Strip the cable .

-
-

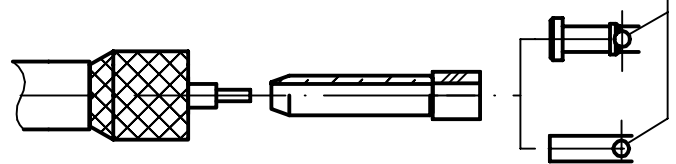


Stripping	a	b	c	d	e
inch	0.157	0.394	0.728	0	0.571
mm	4	10	18.5		14.5

②

Fan the braid .
Slide braid clamp and insulator between dielectric and braid .
Slide center contact on until it bottoms against cable dielectric .
Solder or crimp center contact .
Crimping tool : R282 223 000 (Hex. : 0.068)
or R282 293 000 (M22520/5-01)
+ dies R282 235 011 (M22520/5-11)

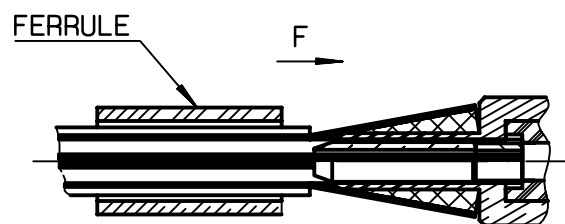
SOLDER / CRIMPING



③

Slide cable into body until bottoms against insulator .
Slide ferrule over the braid .
(In direction F)

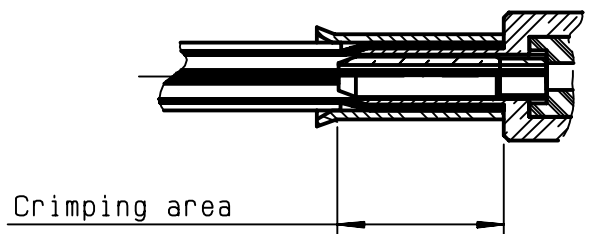
-



④

Crimp the ferrule with crimping tool R 282 223 000 (Hex. : 0.213) or crimping tool R282 293 000 (M22520/5-01)
+ dies R282 235 011 (M22520/5-11)
Cut excess braid if necessary.

-
-
-
-



PICTON