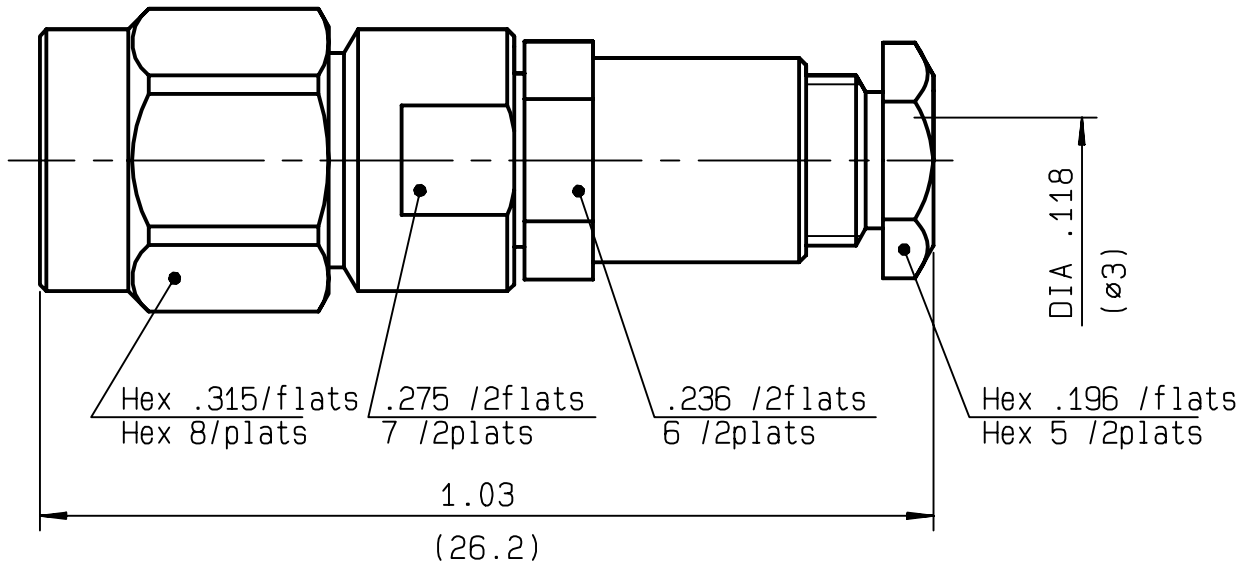


**STRAIGHT PLUG CLAMP TYPE
CABLE 2.6/50 S**

R125.091.001
SERIES SMA



NOMINAL IMPEDANCE	50 Ω
FREQUENCY RANGE	0-12.4 GHz
TEMPERATURE RATING	-65/+165 °C
V.S.W.R	1.15 + .02 x F(GHz)Maxi
RF INSERTION LOSS	0.06 √F(GHz) dB Maxi
VOLTAGE RATING	250 Veff Maxi
DIELECTRIC WITHSTANDING VOLTAGE	750 Veff Mini
INSULATION RESISTANCE	5000 MΩMini
HERMETIC SEAL	NA Atm.cm ³ /s
LEAKAGE (pressurized only)	NA
MECHANICAL DURABILITY	500 Cycles
WEIGHT	0 gr
SPECIFICATION	

CABLES : **KX 22A**
RG 188
RG 316

OTHERS CHARACTERISTICS

CABLE RETENTION	90 N Mini
CENTER CONTACT RETENTION	
Axial force - mating end	27 N Mini
Axial force - opposite end	27 N Mini
Torque	NA cm.N Mini
RECOMMENDED TORQUES	
Mating	100 cm.N
Panel nut	NA cm.N
Clamp nut	100 cm.N

CONNECTOR PARTS	MATERIALS	FINISH	(all values are given) in micrometers
BODY	STAINLESS STEEL	PASSIVATED .	
OUTER CONTACT			
CENTER CONTACT	BRASS	GOLD 1.3 OVER NICKEL 2	
INSULATOR	PTFE	-	
GASKET	SILICONE RUBBER	-	
OTHERS PIECES	BRASS	NICKEL 2	

ISSUE	CREATION DATE	FILE PART-NUMBER
9944C00	17/04/1989	-

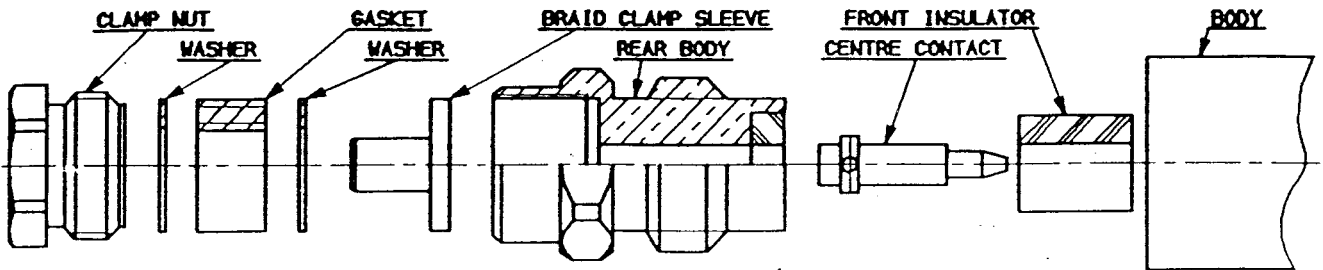


Connect to the future

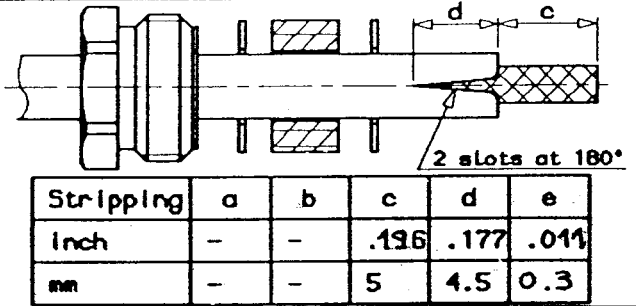
The information given here is subject to change without notice.
Design changes may be in order to improve the product .

GUILLOMIN

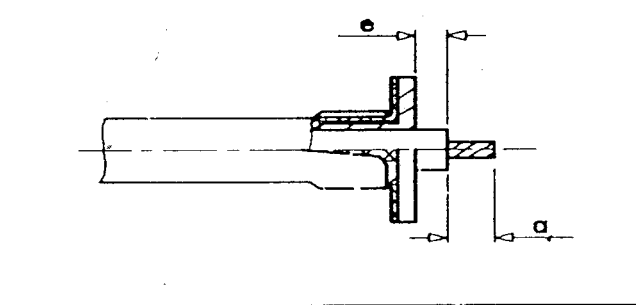
STRAIGHT PLUG , CLAMP VERSION FOR
2.6/50 CABLE



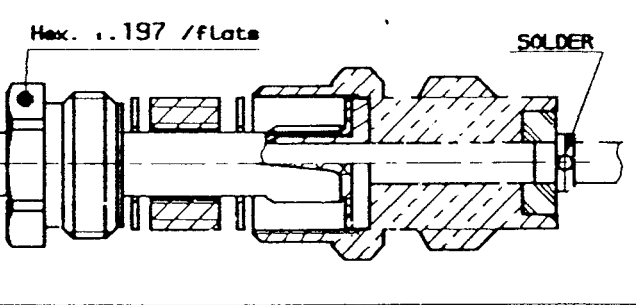
①
1-1 Slide the clamp nut, the 1st washer, the gasket and the 2nd washer onto the cable .
1-2 Strip the cable .
1-3 Cut the jacket (2 slots) .



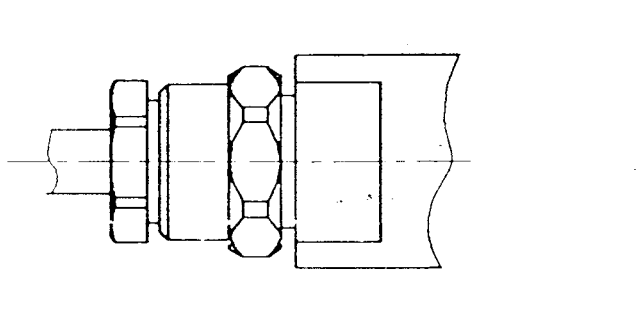
②
2-1 Slide clamp braid sleeve over braid .
2-2 Cut the braid flush with the clamp braid sleeve .
2-3 Strip the dielectric as shown .



③
3-1 Screw sub-assembly into the connector rear body (coupling torque 3.54 in. lb)
3-2 Slide centre contact over centre conductor until it bottoms against insulator
3-3 Solder centre contact .
3-4 Mount front insulator .



④
4-1 Screw sub-assembly into the connector body .
Recommended coupling torque
8.86 In. lb



ISSUE	REVISION No	DESCRIPTION	BY	DATE

Initiated on _____
Superseded on _____

The information given here is subject to change without notice. Design changes may be made in order to improve the product.