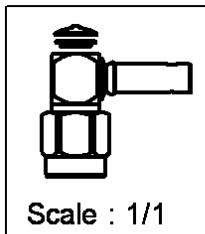
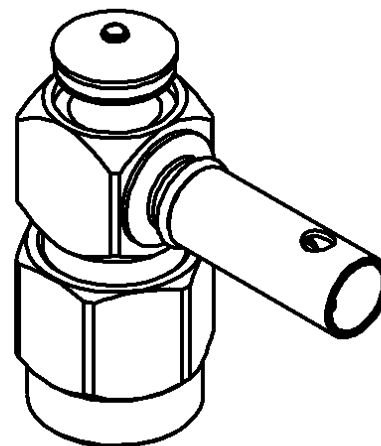
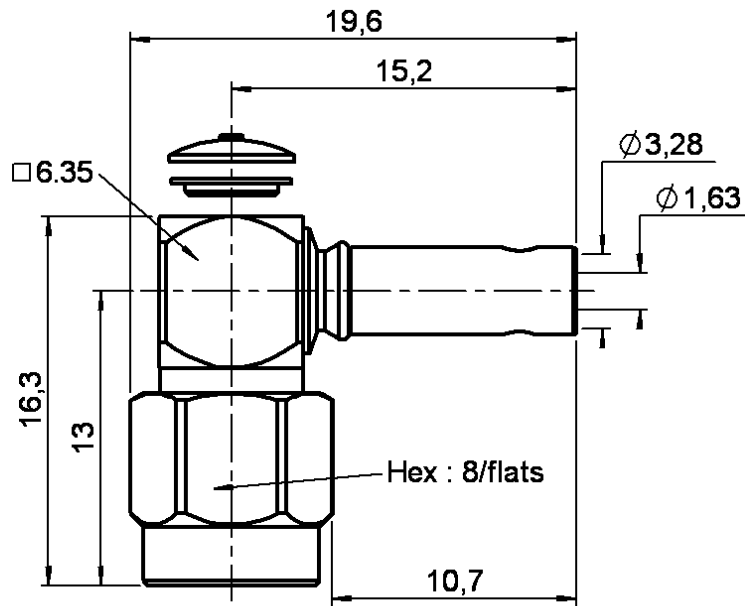


RIGHT ANGLE PLUG CRIMP TYPE

R125.172.001

CABLE 2.6/50 S

Series : SMA



All dimensions are in mm.

| COMPONENTS | MATERIALS | PLATING |
|----------------|-----------------|--------------------------------------|
| BODY | STAINLESS STEEL | PASSIVATED . μm |
| CENTRE CONTACT | BRASS | GOLD 0.5 OVER NICKEL 2 μm |
| OUTER CONTACT | - | - μm |
| INSULATOR | PTFE | |
| GASKET | SILICONE RUBBER | |
| OTHERS PARTS | STAINLESS STEEL | PASSIVATED . μm |
| - | - | - |
| - | - | - |



Edition : 9840 R

Design changes may be in order to improve the product.

RIGHT ANGLE PLUG CRIMP TYPE

R125.172.001

CABLE 2.6/50 S

Series : SMA

ELECTRICAL CHARACTERISTICS

Impedance **50** Ω
 Frequency **0-12.4** GHz
 VSWR **1.15 + 0.030** x F(GHz) Maxi
 Insertion loss **0.15** √F(GHz) dB
 RF leakage - (**60** - F(GHz)) dB mini
 Operating temperature **-65/+165** °C
 Voltage rating **250** Veff Maxi
 Dielectric withstanding **750** Veff mini
 Insulation resistance **5000** MΩ mini

SPECIFICATION

| Stripping | a | b | c | d | e | f |
|-----------|------|------|------|------|------|------|
| mm | 2.80 | 7.00 | 12.8 | 0.00 | 10.0 | 0.00 |

Assembly instruction : **Crimp 04**

Recommended cables
 RG 316
 KX 22A
 RG 188

Cable retention
 - pull off **90** N mini
 - torque **NA** N.cm

MECHANICAL CHARACTERISTICS

Centre contact retention
 Axial force – Mating end **27** N mini
 Axial force – Opposite end **27** N mini
 Torque **2.8** N.cm mini

TOOLING

| Part Number | Description | Hexagon |
|--------------|---------------|---------|
| . | . | . |
| R282.235.003 | CRIMPING DIES | 3.25 |
| R282.271.000 | CRIMPING TOOL | 3.25 |
| R282.293.000 | CRIMPING TOOL | - |

Recommended torque
 Mating **100** N.cm
 Panel nut **NA** N.cm
 Clamp nut **NA** N.cm
 A/F clamp nut **0.000** mm

Mating life **500** Cycles mini
 Weight **0.000** g

OTHERS CHARACTERISTICS

-

ENVIRONMENTAL

Hermetic seal **NA** Atm.cm3/s
 Leakage – pressurised only **NA** Mpa



Edition : 9840 R

Design changes may be in order to improve the product.