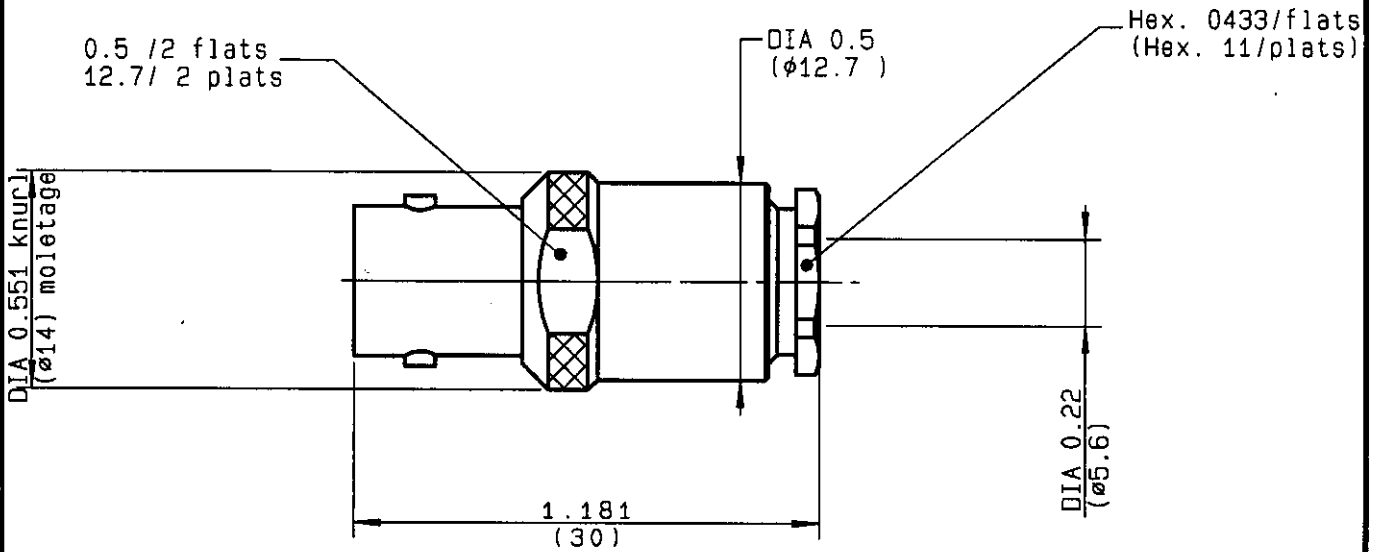


**STRAIGHT CABLE JACK-CLAMP TYPE
CABLE 5/50**

R141.207.000
SERIES BNC



NOMINAL IMPEDANCE	50 Ω
FREQUENCY RANGE	0-4 GHz
TEMPERATURE RATING	-65,+165 °C
V.S.W.R	1.3 + 0 x F(GHz)Maxi
RF INSERTION LOSS	\sqrt{F} (GHz) dB Maxi
VOLTAGE RATING	500 Veff Maxi
DIELECTRIC WITHSTANDING VOLTAGE	1500 Veff Mini
INSULATION RESISTANCE	5000 MΩMini
HERMETIC SEAL	Atm.cm ³ /s
LEAKAGE (pressurized only)	
MECHANICAL DURABILITY	Cycles
WEIGHT	17 gr
SPECIFICATION	DHS 795 130

CABLES : **KX 15**
R6 141
R6 58

OTHERS CHARACTERISTICS

CABLE RETENTION	180 N Mini
CENTER CONTACT RETENTION	
Axial force - mating end	N Mini
Axial force - opposite end	N Mini
Torque	cm.N Mini
RECOMMENDED TORQUES	
Mating	cm.N
Panel nut	cm.N
Clamp nut	cm.N

CONNECTOR PARTS	MATERIALS	FINISH	(all values are given in micrometers)
BODY	BRASS	NICKEL .	
OUTER CONTACT			
CENTER CONTACT	BERYLLIUM COPPER	GOLD .	
INSULATOR	PTFE	-	
GASKET		-	
OTHERS PIECES			

ISSUE

9827C00

CREATION DATE

FILE PART-NUMBER



RADIALL®

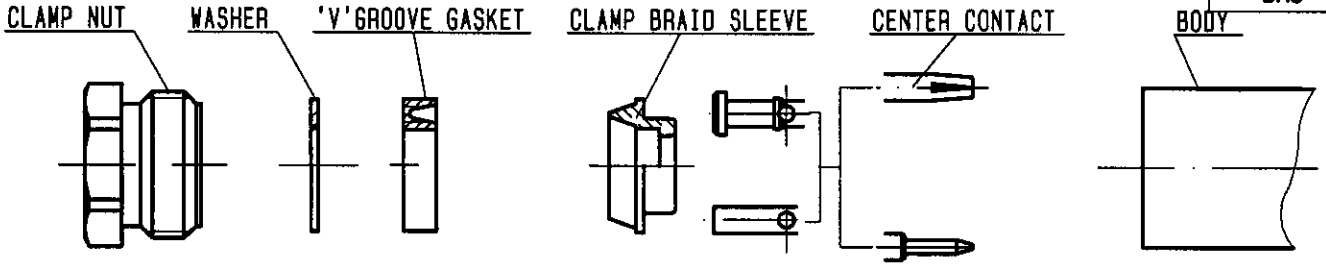
The information given here is subject to change without notice. Design changes may be in order to improve the product.

Connect to the future



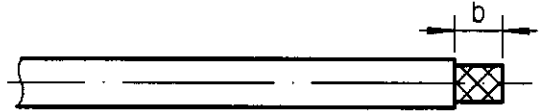
R141.207.000

ISSUE 9827C00 SERIES BNC



①

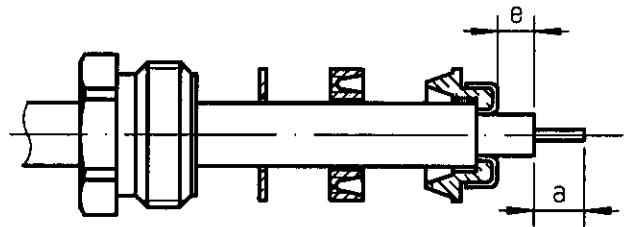
Strip the cable .



Stripping	a	b	c	d	e
inch	0.118	0.354	0	0	0.039
mm	3	9			1

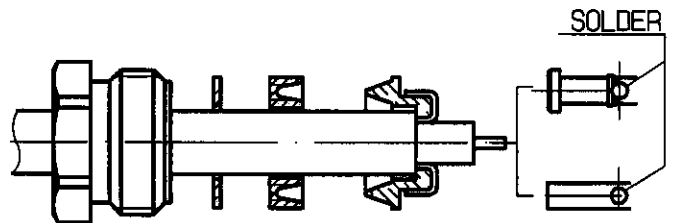
②

Slide clamp nut, washer and 'V'groove gasket onto cable .
 Slide clamp braid sleeve over braid .
 Fold braid back and trim off extra braid .
 Trim dielectric back as shown .



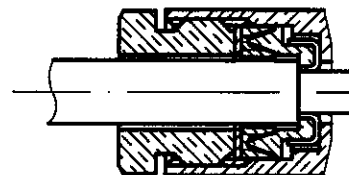
③

Solder the center contact onto cable center conductor .



④

Screw sub-assembly into the connector body .
 (recommended coupling torque 450N.cm)
 39.82in.lb



Hex. : 11 mm /flats
 Hex. : 0.433inch /flats

PERRIN