






Ampère	Poles	110 V 50 a. 60 Hz	230 V 50 a. 60 Hz	400 V 50 a. 60 Hz	500 V 50 a. 60 Hz	> 50 - 500 V 100 - 300 Hz	> 50 - 500 V over 300 - 500 Hz		
		3pole 4h 4pole 4h 5pole 4h	3pole 6h 4pole 9h 5pole 9h	3pole 9h 4pole 6h 5pole 6h	3pole 7h 4pole 7h 5pole 7h	3pole 10h 4pole 10h 5pole 10h	3pole 2h 4pole 2h 5pole 2h		

**Part numbers**


	16	3	110 304	<b>110 306</b>	110 309				10/60	161
	16	3			110 306 AS = lockable with padlock (padlock is not included)					
	16	4	110 404	110 409	<b>110 406</b>	110 407	110 410	110 402	10	209
	16	5	110 504	110 509	<b>110</b>				10/60	227
	16	5			110 NI (NI = with nickel plated contacts & glass-fibre reinforced enclosure)					
	32	3	130 304	<b>130 306</b>	130 309				10	291
	32	4	130 404	130 409	<b>130 406</b>	130 407	130 410	130 402	10	300
	32	5	130 504	130 509	<b>130</b>				10/60	320
	32	5			130 NI (NI = with nickel plated contacts & glass-fibre reinforced enclosure)					


pic.130

**Wall sockets  IP 44, external fixing, 1 top cable entry**

	16	3	111 304	<b>111 306</b>	111 309				5	356
	16	4	111 404	111 409	<b>111 406</b>	111 407	111 410	111 402	5	389
	16	5	111 504	111 509	<b>111</b>				5	425
	16	5			111 NI (NI = with nickel plated contacts & glass-fibre reinforced enclosure)					
	32	3	131 304	<b>131 306</b>	131 309				5	426
	32	4	131 404	131 409	<b>131 406</b>	131 407	131 410	131 402	5	453
	32	5	131 504	131 509	<b>131</b>				5	489
	32	5			131 NI (NI = with nickel plated contacts & glass-fibre reinforced enclosure)					


pic.131

**Wall sockets  IP 44, internal fixing, 2 cable entries both, top and bottom**

	16	3		<b>114 306</b>					5	457
	16	3		<b>115 306</b> <sup>2)</sup>					5	467
	32	3		<b>134 306</b> <sup>3)</sup>					5	563
	32	3		<b>135 306</b> <sup>2)</sup>					5	595
	16	5			<b>114</b>				5	525
	16	5			<b>114 UV</b> <sup>1)</sup>				5	525
	16	5			<b>115</b> <sup>2)</sup>				5	537
	16	5			115 NI (NI = with nickel plated contacts & glass-fibre reinforced enclosure)					
	32	5			<b>134</b> <sup>3)</sup>				5	538
	32	5			<b>134 UV</b> <sup>1, 3)</sup>				5	538
32	5			<b>135</b> <sup>2)</sup>				5	619	


pic.132

**Mini combinations  IP 44, CEETyp wall socket with Schuko socket**

	63	3	161 304	<b>161 306</b>	161 309				1	825
	63	4	161 404	161 409	<b>161 406</b>	161 407	161 410	161 402	2	1046
	63	5	161 504	161 509	<b>161</b>				2	1105
	63	5			161 NI (NI = with nickel plated contacts & glass-fibre reinforced enclosure)					

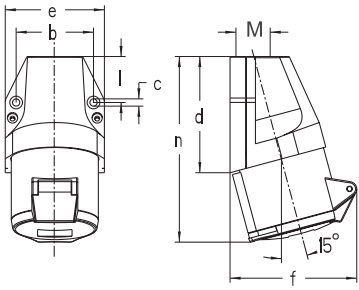
pic.161

**Wall sockets, internal fixing,  IP 44**

	63	3	163 304	<b>163 306</b>	163 309				1	1590
	63	4	163 404	163 409	<b>163 406</b>	163 407	163 410	163 402	2	1830
	63	5	163 504	163 509	<b>163</b>				2	1900

pic.163

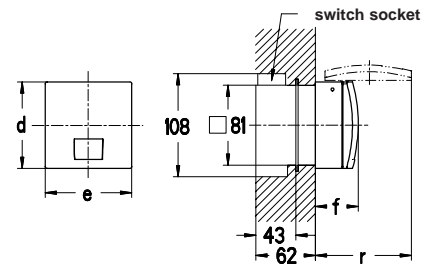
**Wall sockets  IP 44, internal fixing, cable entries: 2 x top, 2 x bottom (knock-out)**



Amp.	16			32		
Pole	3	4	5	3	4	5
b	45.5	60	60	60	60	60
c	5.3	5.3	5.3	5.3	5.3	5.3
d	74	80	80	97	97	97
e	60	74	74	82	82	82
f	75	86	90	103	103	105
l	28	31	31	45	45	45
n	120	128	129	154	154	155
M	20	20	20	25	25	25

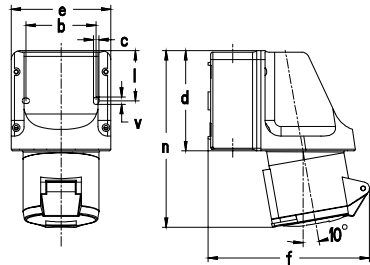
Page 10, item 1

110, 130 etc.



Page 11, item 2

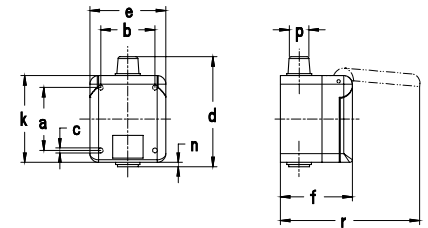
436 etc.



Amp.	16			32		
Pole	3	4	5	3	4	5
b	66.5	66.5	66.5	66.5	66.5	66.5
c	5	5	5	5	5	5
d	96	96	96	96	96	96
e	95	95	95	95	95	95
f	140	143	146	154	154	157
l	47.5	47.5	47.5	47.5	47.5	47.5
n	160	164	164	173	173	173
v	7	7	7	7	7	7
M	20/25	20/25	20/25	20/25	20/25	20/25

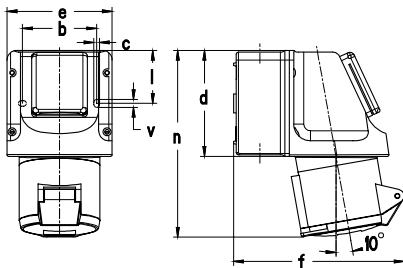
Page 10, item 2

111, 131 etc.



Page 11, item 3

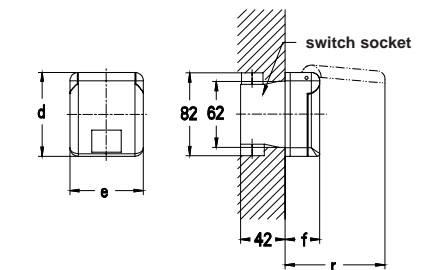
117306 etc.



Amp.	16		32	
Pole	3	5	3	5
b	66.5	66.5	66.5	66.5
c	5	5	5	5
d	96	96	96	96
e	95	95	95	95
f	140	146	154	157
l	47.5	47.5	47.5	47.5
n	160	164	173	173
v	7	7	7	7
M	20/25	20/25	20/25	20/25

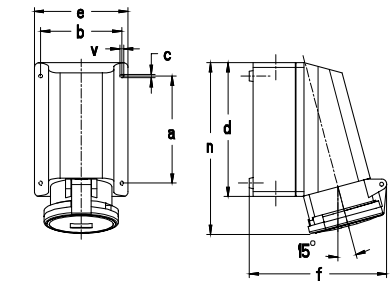
Page 10, item 3

114, 115 etc.



Page 11, item 4

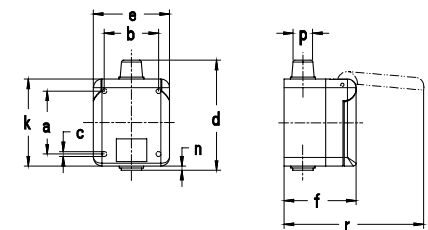
418306 etc.



Amp.	63		
Pole	3	4	5
a	136	136	136
b	104	104	104
c	4.2	4.2	4.2
d	172	172	172
e	121	121	121
f	178	178	178
n	220	220	220
v	5	5	5
M	32	32	32

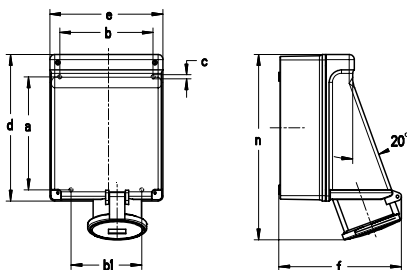
Page 10, item 4

161 etc.



Page 11, item 5

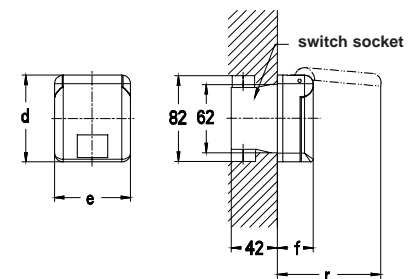
10 007



Amp.	63		
Pole	3	4	5
a	183	183	183
b	151	151	151
b1	114	114	114
c	6.5	6.5	6.5
d	237	237	237
e	183	183	183
f	196	196	196
n	302	302	302
M	25/32	25/32	25/32

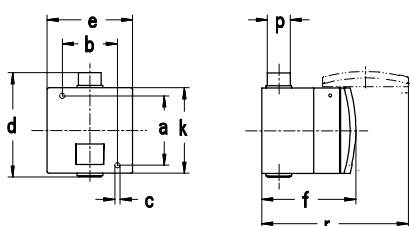
Page 10, item 5

163 etc.



Page 11, item 6

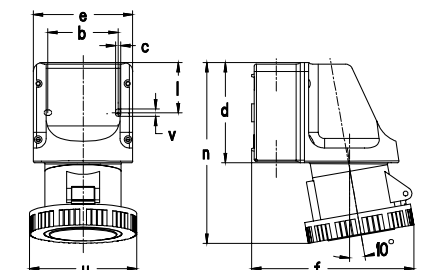
10 008



Amp.	16			32		
Pole	3	4	5	3	4	5
a	73	73	73	73	73	73
b	58	58	58	58	58	58
c	5.5	5.5	5.5	5.5	5.5	5.5
d	114	114	114	114	114	114
e	90	90	90	90	90	90
f	92	92	92	98	98	98
k	90	90	90	90	90	90
p	8/20	8/20	8/20	8/20	8/20	8/20
r	150	150	150	160	160	160

Page 11, item 1

116, 136 etc.



Page 12, item 1

119, 139 etc.