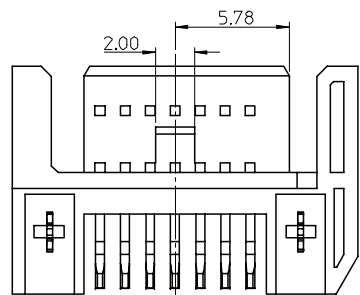
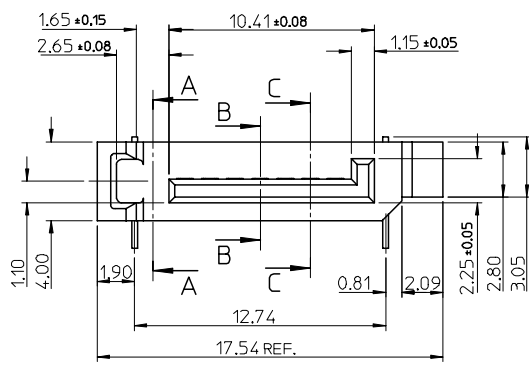
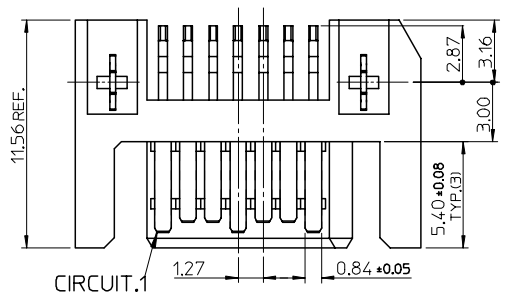
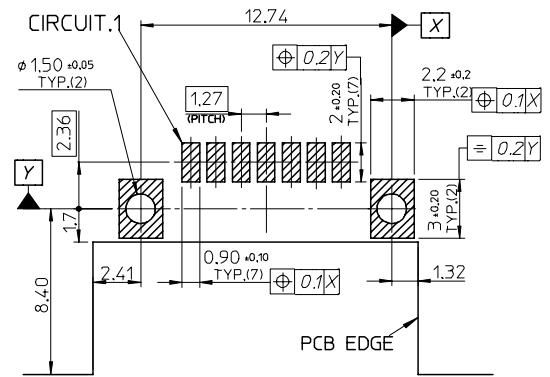
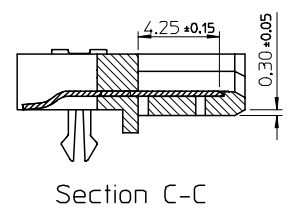
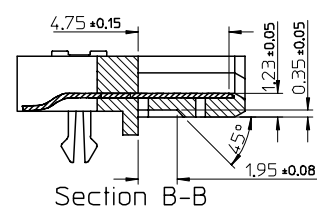
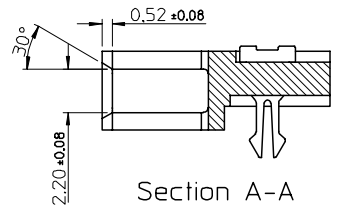
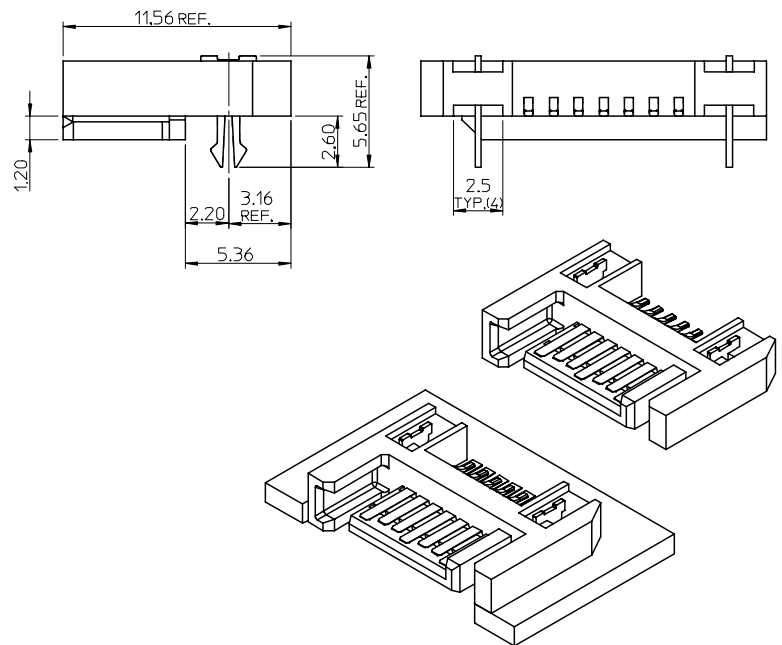


P/N	CONTACT AREA PLATING	REMARK
67490-0220	GOLD FLASH	
67490-0221	0.76 MICRONS GOLD PLATED	TIN-LEAD
67490-0225	0.38 MICRONS GOLD PLATED	
67490-3220	GOLD FLASH	
67490-3221	0.76 MICRONS GOLD PLATED	PURE TIN
67490-3225	0.38 MICRONS GOLD PLATED	



- NOTES:
- MATERIAL:
HOUSING: HIGH TEMPERATURE THERMAL PLASTIC, GLASS FILLED, UL94V-0, COLOR : BLACK
TERMINAL/FORKLOCK: COPPER ALLOY
MYLAR: ADHENSIVE MYLAR 4.5MMX15.5MM
 - TERMINAL PLATING:
CONTACT AREA: GOLD PLATED
SOLDERING TAIL: 1.27 MICRONS MINIMUM TIN-LEAD OR TIN PLATED UNDER PLATE; NICKEL 1.27 MICRONS MINIMUM NICKEL PLATED
 - FORKLOCK PLATING :
1.27 MICRONS MINIMUM TIN-LEAD OR TIN PLATED OVERALL 1.27 MICRONS MINIMUM NICKEL UNDER-PLATED
 - PACKAGING SPECIFICATION REFER TO PK-67490-001
 - PRODUCT SPECIFICATION REFER TO PS-67490-001
 - MATING PART: 67538, 67489



RECOMMEND PCB LAYOUT (t=1.6)

EC NO: SH2005-0091 DRWN: GRMA 2004/10/13 CHKD: 2004/10/14 APPR: YTYAP 2004/10/14	QUALITY SYMBOLS ▽ = 0 ∇ = 0	GENERAL TOLERANCES (UNLESS SPECIFIED)	SCALE 4:1 DESIGN UNITS METRIC	THIRD ANGLE PROJECTION REVISE ON CAD ONLY																
		<table border="1"> <thead> <tr> <th></th> <th>mm</th> <th>INCH</th> </tr> </thead> <tbody> <tr> <td>4 PLACES</td> <td>± ---</td> <td>± ---</td> </tr> <tr> <td>3 PLACES</td> <td>± ---</td> <td>± ---</td> </tr> <tr> <td>2 PLACES</td> <td>± 0.15</td> <td>± ---</td> </tr> <tr> <td>1 PLACE</td> <td>± 0.25</td> <td>± ---</td> </tr> <tr> <td colspan="3">ANGULAR ± 3 °</td> </tr> </tbody> </table>		mm	INCH	4 PLACES	± ---	± ---	3 PLACES	± ---	± ---	2 PLACES	± 0.15	± ---	1 PLACE	± 0.25	± ---	ANGULAR ± 3 °		
	mm	INCH																		
4 PLACES	± ---	± ---																		
3 PLACES	± ---	± ---																		
2 PLACES	± 0.15	± ---																		
1 PLACE	± 0.25	± ---																		
ANGULAR ± 3 °																				
DRAFT WHERE APPLICABLE MUST REMAIN WITHIN DIMENSIONS	MATERIAL NO. SEE TABLE DOCUMENT NO. SD-67490-001 SHEET NO. 1 OF 1	THIS DRAWING CONTAINS INFORMATION THAT IS PROPRIETARY TO MOLEX INCORPORATED AND SHOULD NOT BE USED WITHOUT WRITTEN PERMISSION																		