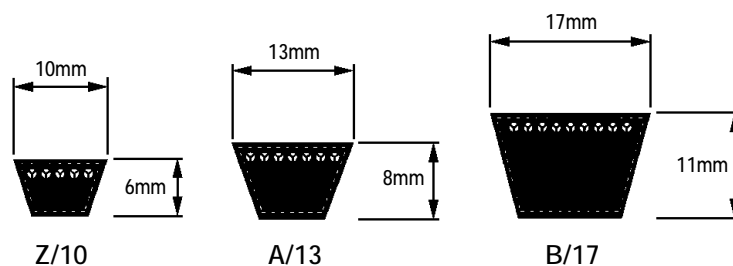




V BELTS

- To BS 3790, DIN 2215, ISO 4184
- Power transmission ratings increased for longer belt life and operational safety
- Other lengths available to maximum 10,000mm

See page 81 for compatible pulleys.



Profile : Z/10 a = 10mm, b = 6mm

Order Code	Length	Weight
106 151 510	510	0.033
106 151 520	520	0.033
106 151 560	560	0.036
106 151 570	570	0.036
106 151 600	600	0.038
106 151 630	630	0.040
106 151 700	700	0.045
106 151 750	750	0.048
106 151 780	780	0.050
106 151 800	800	0.051
106 151 840	840	0.054
106 151 875	875	0.056
106 151 890	890	0.057
106 151 920	920	0.059
106 151 990	990	0.063
106 151 101	1015	0.065
106 151 105	1055	0.068
106 151 108	1080	0.069
106 151 115	1155	0.074
106 151 127	1270	0.081

Profile : A/13 a = 13mm, b = 8mm

Order Code	Length	Weight
106 153 640	640	0.070
106 153 670	670	0.073
106 153 740	740	0.081
106 153 790	790	0.086
106 153 820	820	0.089
106 153 850	850	0.093
106 153 890	890	0.097
106 153 920	920	0.100
106 153 950	950	0.104
106 153 970	970	0.106
106 153 990	990	0.108
106 153 102	1020	0.111
106 153 105	1050	0.114
106 153 107	1070	0.117
106 153 110	1100	0.120
106 153 113	1130	0.123
106 153 115	1150	0.125
106 153 118	1180	0.129
106 153 120	1200	0.131
106 153 123	1230	0.134
106 153 125	1250	0.136
106 153 128	1280	0.140
106 153 130	1300	0.142
106 153 133	1330	0.145
106 153 136	1360	0.148
106 153 143	1430	0.156
106 153 146	1460	0.159
106 153 155	1550	0.169
106 153 161	1610	0.175
106 153 166	1660	0.181
106 153 169	1690	0.184
106 153 171	1710	0.186
106 153 176	1760	0.192
106 153 181	1810	0.197

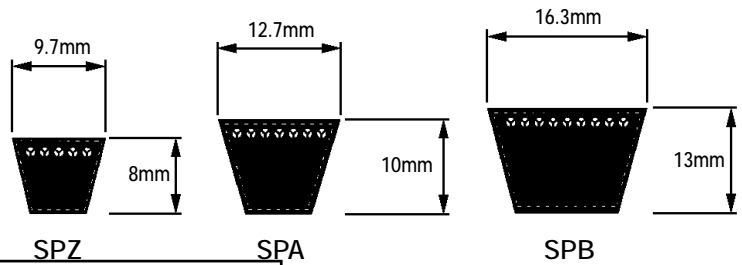
Profile : B/17 a = 17mm, b = 11mm

Order Code	Length	Weight
106 155 860	860	0.169
106 155 910	910	0.178
106 155 930	930	0.182
106 155 960	960	0.188
106 155 100	1000	0.196
106 155 106	1060	0.208
106 155 110	1100	0.216
106 155 116	1160	0.227
106 155 121	1210	0.237
106 155 124	1240	0.243
106 155 126	1260	0.247
106 155 131	1310	0.257
106 155 134	1340	0.263
106 155 137	1370	0.269
106 155 144	1440	0.282
106 155 146	1460	0.286
106 155 151	1510	0.296
106 155 156	1560	0.306
106 155 162	1620	0.318
106 155 169	1690	0.331
106 155 176	1760	0.345
106 155 180	1800	0.353
106 155 185	1850	0.363
106 155 195	1950	0.382
106 155 207	2070	0.406
106 155 210	2100	0.412
106 155 218	2180	0.427
106 155 233	2330	0.457
106 155 250	2500	0.490

WEDGE BELTS

- To BS 3790, DIN 7753, ISO 4184
- Compact, economical and efficient
- Higher power transmission capability than classical V-belts
- Other lengths available to maximum 4,500mm

See page 81 for compatible pulleys.



Farnell Codes : 3466838 - 7077

Farnell Codes : 3467089 - 7247

Profile : SPZ a = 9.7mm, b = 8mm

Order Code	Length	Weight kg
106 150 063	630	0.046
106 150 067	670	0.049
106 150 071	710	0.052
106 150 075	750	0.055
106 150 080	800	0.059
106 150 085	850	0.066
106 150 090	900	0.070
106 150 095	950	0.074
106 150 100	1000	0.078
106 150 106	1060	0.083
106 150 112	1120	0.087
106 150 118	1180	0.089
106 150 121	1210	0.095
106 150 125	1250	0.097
106 150 132	1320	0.104
106 150 140	1400	0.111
106 150 150	1500	0.118
106 150 160	1600	0.126
106 150 170	1700	0.133
106 150 180	1800	0.140
106 150 190	1900	0.148
106 150 200	2000	0.165
106 150 224	2240	0.176
106 150 236	2360	0.180
106 150 250	2500	0.185

Profile : SPA a = 12.7mm, b = 10mm

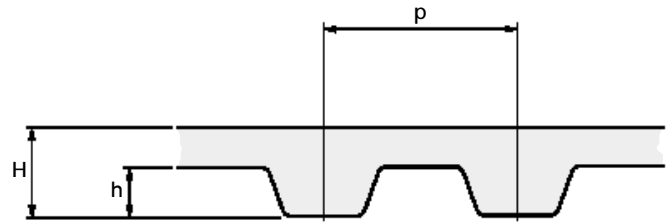
Order Code	Length	Weight kg
106 152 080	800	0.098
106 152 085	850	0.104
106 152 090	900	0.111
106 152 095	950	0.117
106 152 100	1000	0.123
106 152 106	1060	0.130
106 152 112	1120	0.138
106 152 118	1180	0.145
106 152 125	1250	0.154
106 152 132	1320	0.162
106 152 140	1400	0.172
106 152 150	1500	0.184
106 152 160	1600	0.197
106 152 170	1700	0.209
106 152 180	1800	0.221
106 152 190	1900	0.233
106 152 200	2000	0.246

Profile : SPB a = 16.3mm, b = 13mm

Order Code	Length	Weight kg
106 152 225	1250	0.244
106 152 232	1320	0.257
106 152 240	1400	0.273
106 152 250	1500	0.293
106 152 260	1600	0.312
106 152 270	1700	0.332
106 152 280	1800	0.351
106 152 290	1900	0.371
106 152 300	2000	0.390

CLASSICAL TIMING BELTS

Use matching pulleys on pages 82 & 83



MXL Pitch = 0.08" (2.032mm) Width = 1/8" (3.175mm)

Order Code	Length (inches)	Weight (kg)
106 162 036	3.6	0.003
106 162 044	4.4	0.004
106 162 048	4.8	0.005
106 162 056	5.6	0.006
106 162 064	6.4	0.006
106 162 088	8.8	0.007
106 162 100	10.0	0.008
106 162 112	11.2	0.008
106 162 120	12.0	0.010
106 162 140	14.0	0.010

XL Pitch = 1/5" (5.08mm) Width = 1/4" (6.35mm)

Order Code	Length (inches)	Weight (kg)
106 160 060	6	0.010
106 160 070	7	0.010
106 160 080	8	0.012
106 160 090	9	0.014
106 160 100	10	0.016
106 160 110	11	0.017
106 160 120	12	0.019
106 160 130	13	0.020
106 160 140	14	0.022
106 160 150	15	0.023
106 160 160	16	0.024
106 160 170	17	0.026
106 160 180	18	0.028
106 160 190	19	0.030
106 160 200	20	0.030
106 160 210	21	0.032
106 160 220	22	0.034
106 160 230	23	0.036
106 160 240	24	0.038
106 160 250	25	0.039
106 160 260	26	0.039

L Pitch = 3/8" (9.525mm) Width = 1/2" (12.7mm)

Order Code	Length (inches)	Weight (kg)
106 161 124	12.4	0.056
106 161 150	15	0.063
106 161 187	18.7	0.082
106 161 210	21	0.083
106 161 225	22.5	0.100
106 161 240	24	0.100
106 161 255	25.5	0.114
106 161 270	27	0.117
106 161 285	28.5	0.126
106 161 300	30	0.132
106 161 322	32.2	0.143
106 161 345	34.5	0.147
106 161 367	36.7	0.158
106 161 390	39	0.168
106 161 420	42	0.180
106 161 450	45	0.196
106 161 480	48	0.211
106 161 510	51	0.238
106 161 540	54	0.221
106 161 600	60	0.180

7

	h	H
MXL	0.63	1.14
XL	1.03	2.30
L	1.69	3.60

selecting timing belts

Pulley Diameter - Use as large a pulley diameter as possible to give the best performance with high peripheral speeds. Using a larger diameter minimises the bending stress in the belt and allows the use of a narrower belt.

Belt Width - It is preferred to select a belt width which is less than the diameter of the smaller pulley. The wider the toothed belt, the higher the possibility of edge stresses occurring in the case of inaccurate assembly. This could cause abrasion and impair the smooth running of the belt. In marginal cases, it may be better to select a larger pitch rather than a wider belt.

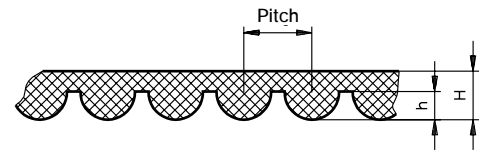
Belt Length - Wherever possible, use standard belt lengths. Special lengths can be produced to order but have cost and lead-time disadvantages.

HTD TIMING BELTS

HTD Timing Belt Drives have a positive locking profile which ensures slip-free transmission of motion between the driving and driven pulleys. Low belt tension and low friction operation minimise energy loss providing high efficiency motion transfer.

Other key features of the HTD belt system are:

- Low belt tension and bearing load
- Wide power / speed range
- Low maintenance
- Small space requirement
- Smooth constant running speed
- Suitable for very low as well as high speeds



Use matching pulleys on pages 84 - 86

Pitch : 3mm

Width 9mm Order Code	Width 15mm Order Code	Belt Length	Teeth
106 171 105	106 171 305	111	37
106 171 108	106 171 308	144	48
106 171 110	106 171 310	150	50
106 171 112	106 171 312	159	53
106 171 114	106 171 314	168	56
106 171 116	106 171 316	177	59
106 171 118	106 171 318	201	67
106 171 120	106 171 320	210	70
106 171 121	106 171 321	213	71
106 171 122	106 171 322	216	72
106 171 124	106 171 324	225	75
106 171 127	106 171 327	252	84
106 171 128	106 171 328	255	85
106 171 130	106 171 330	267	89
106 171 132	106 171 332	285	95
106 171 133	106 171 333	300	100
106 171 134	106 171 334	312	104
106 171 135	106 171 335	318	106
106 171 137	106 171 337	336	112
106 171 138	106 171 338	339	113
106 171 140	106 171 340	363	121
106 171 142	106 171 342	384	128
106 171 143	106 171 343	390	130
106 171 145	106 171 345	420	140
106 171 147	106 171 347	447	149
106 171 149	106 171 349	474	158
106 171 150	106 171 350	486	162
106 171 152	106 171 352	501	167
106 171 154	106 171 354	513	171
106 171 156	106 171 356	531	177
106 171 157	106 171 357	537	179
106 171 159	106 171 359	564	188
106 171 161	106 171 361	597	199
106 171 162	106 171 362	606	202
106 171 164	106 171 364	633	211
106 171 167	106 171 367	669	223
106 171 170	106 171 370	711	237
106 171 173	106 171 373	882	294
106 171 175	106 171 375	945	315
106 171 178	106 171 378	1062	354
106 171 180	106 171 380	1125	375
106 171 184	106 171 384	1263	421
106 171 188	106 171 388	1500	500
106 171 190	106 171 390	1530	510
106 171 192	106 171 392	1569	523

Pitch : 5mm

Width 9mm Order Code	Width 15mm Order Code	Belt Length	Teeth
106 173 112	106 173 312	330	66
106 173 114	106 173 314	350	70
106 173 116	106 173 316	375	75
106 173 118	106 173 318	400	80
106 173 120	106 173 320	425	85
106 173 122	106 173 322	450	90
106 173 126	106 173 326	500	100
106 173 128	106 173 328	535	107
106 173 130	106 173 330	565	113
106 173 132	106 173 332	600	120
106 173 133	106 173 333	615	123
106 173 134	106 173 334	635	127
106 173 136	106 173 336	665	133
106 173 139	106 173 339	710	142
106 173 141	106 173 341	740	148
106 173 142	106 173 342	755	151
106 173 144	106 173 344	800	160
106 173 146	106 173 346	835	167
106 173 149	106 173 349	890	178
106 173 151	106 173 351	925	185
106 173 152	106 173 352	950	190
106 173 154	106 173 354	1000	200
106 173 156	106 173 356	1050	210
106 173 159	106 173 359	1125	225
106 173 163	106 173 363	1270	254
106 173 167	106 173 367	1420	284
106 173 169	106 173 369	1500	300
106 173 171	106 173 371	1595	319
106 173 175	106 173 375	1790	358
106 173 176	106 173 376	1800	360
106 173 178	106 173 378	1870	374
106 173 179	106 173 379	1895	379
106 173 182	106 173 382	2000	400
106 173 188	106 173 388	2525	505

Pitch : 8mm

Width 20mm Order Code	Width 30mm Order Code	Belt Length	Teeth
106 175 105	106 175 305	480	60
106 175 107	106 175 307	560	70
106 175 109	106 175 309	600	75
106 175 111	106 175 311	640	80
106 175 112	106 175 312	656	82
106 175 114	106 175 314	720	90
106 175 117	106 175 317	800	100
106 175 119	106 175 319	880	110
106 175 121	106 175 321	960	120
106 175 124	106 175 324	1040	130
106 175 126	106 175 326	1120	140
106 175 128	106 175 328	1200	150
106 175 130	106 175 330	1280	160
106 175 132	106 175 332	1360	170
106 175 134	106 175 334	1440	180
106 175 137	106 175 337	1600	200
106 175 140	106 175 340	1760	220
106 175 142	106 175 342	1800	225
106 175 144	106 175 344	2000	250
106 175 148	106 175 348	2400	300
106 175 152	106 175 352	2800	350

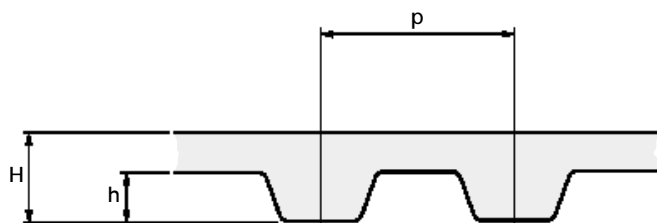
Weight Table

Pitch	Width	Weight (kg/m)
3	9	0.027
	15	0.044
5	9	0.037
	15	0.061
8	20	0.128
	30	0.192

POLYURETHANE TIMING BELTS

- Polyurethane reinforced with steel tension cord
- Maintenance free / wear resistant
- High accuracy
- Temperature range -30°C to $+80^{\circ}\text{C}$

Use matching pulleys on page 88



7

Order Code	Pitch	Width (mm)	Length
106 162 245	T2.5	6	245
106 162 265	T2.5	6	265
106 162 285	T2.5	6	285
106 162 480	T2.5	6	480
106 162 500	T2.5	6	500
106 162 165	T5	10	165
106 162 225	T5	10	225
106 162 245	T5	10	245
106 162 260	T5	10	260
106 162 305	T5	10	305
106 162 340	T5	10	340
106 162 355	T5	10	355
106 162 365	T5	10	365
106 162 390	T5	10	390
106 162 455	T5	10	455
106 162 480	T5	10	480
106 162 690	T5	10	690
106 162 815	T5	10	815
106 162 900	T5	10	900
106 162 990	T5	10	990
106 162 121	T5	10	1215
106 162 138	T5	10	1380

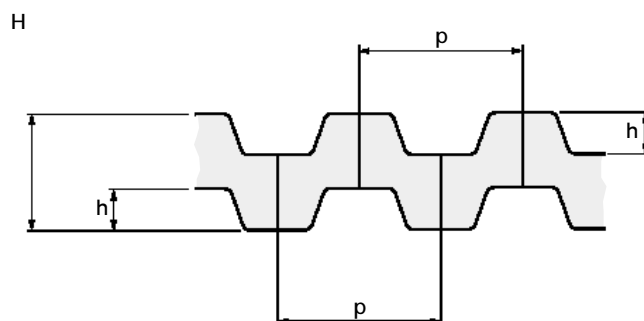
Order Code	Pitch	Width (mm)	Length
106 162 165	T5	16	165
106 162 225	T5	16	225
106 162 245	T5	16	245
106 162 260	T5	16	260
106 162 305	T5	16	305
106 162 340	T5	16	340
106 162 355	T5	16	355
106 162 365	T5	16	365
106 162 390	T5	16	390
106 162 455	T5	16	455
106 162 480	T5	16	480
106 162 690	T5	16	690
106 162 815	T5	16	815
106 162 900	T5	16	900
106 162 990	T5	16	990
106 162 121	T5	16	1215
106 162 138	T5	16	1380

p	H	h
2.5	1.3	0.6
5	2.2	1.0

Double sided belts

Order Code	Pitch	Width (mm)	Length
106 163 460	5	6	460
106 163 620	5	6	620
106 163 460	5	10	460
106 163 620	5	10	620

p	H	h
5	3.4	1.2



V-PULLEYS

• Material : GG-20 DIN 1691

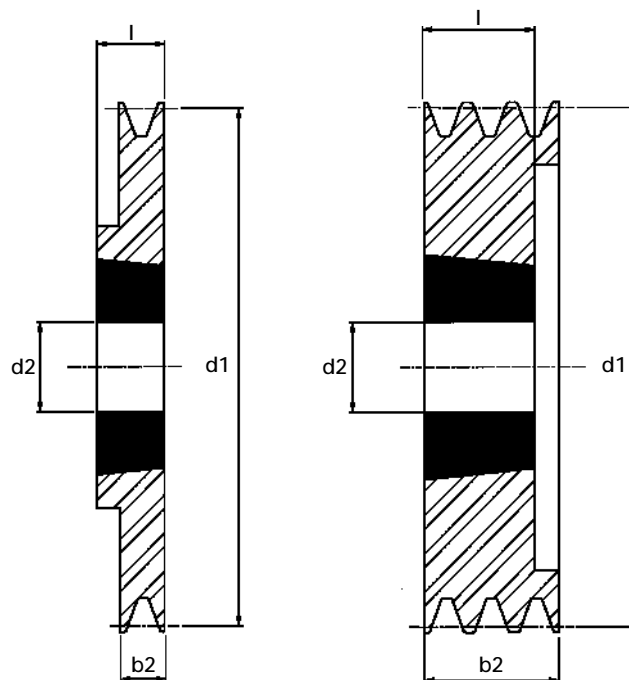
Use taper bushes (see page 90)

Profile : SPZ & Z

Order Code	Datum Diameter	Nr. of Grooves	Weight
106 181 203	67	1	0.3
106 181 206	67	2	0.4
106 181 209	71	1	0.3
106 181 212	71	2	0.4
106 181 215	75	1	0.4
106 181 218	75	2	0.4
106 181 221	80	1	0.5
106 181 224	80	2	0.6
106 181 227	85	1	0.6
106 181 230	85	2	0.5
106 181 233	90	1	0.7
106 181 236	90	2	0.7
106 181 239	95	1	0.7
106 181 242	95	2	0.8
106 181 245	100	1	0.8
106 181 248	100	2	0.9
106 181 251	112	1	1
106 181 254	112	2	1.3
106 181 257	125	1	1
106 181 260	125	2	1.4
106 181 263	140	1	1.2
106 181 266	140	2	1.7
106 181 269	160	1	1.3
106 181 272	160	2	2.5
106 181 275	180	1	1.6
106 181 278	180	2	2.5

Profile : SPB & B

Order Code	Datum Diameter	Nr. of Grooves	Weight
106 181 412	112	1	1.1
106 181 413	112	2	1.5
106 181 418	118	1	1.3
106 181 419	118	2	1.7
106 181 425	125	1	1.5
106 181 426	125	2	1.9
106 181 432	132	1	1.8
106 181 433	132	2	2.2
106 181 440	140	1	2.3
106 181 441	140	2	2.7
106 181 450	150	1	2.7
106 181 451	150	2	3.1
106 181 460	160	1	2.5
106 181 461	160	2	2.9
106 181 470	170	1	2.9
106 181 471	170	2	3.3
106 181 480	180	1	4.1
106 181 481	180	2	4.5
106 181 490	190	1	4.6
160 181 491	190	2	5.0
106 181 500	200	1	5.0
106 181 501	200	2	5.4

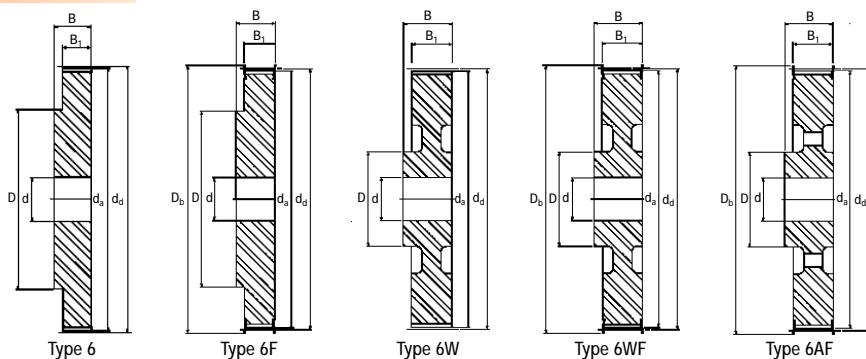


Profile : SPA & A

Order Code	Datum Diameter	Nr. of Grooves	Weight
106 181 287	80	1	0.5
106 181 290	80	2	0.6
106 181 293	85	1	0.6
106 181 296	85	2	0.7
106 181 299	90	1	0.7
106 181 302	90	2	0.8
106 181 305	95	1	0.8
106 181 308	95	2	0.9
106 181 311	100	1	0.8
106 181 314	100	2	0.9
106 181 317	106	1	0.9
106 181 320	106	2	1.1
106 181 323	112	1	1
106 181 326	112	2	1.2
106 181 329	118	1	1.2
106 181 332	118	2	1.4
106 181 335	125	1	1.4
106 181 338	125	2	1.7
106 181 341	132	1	1.6
106 181 344	132	2	1.8
106 181 347	140	1	1.8
106 181 350	140	2	2
106 181 353	150	1	1.4
106 181 356	150	2	2.4
106 181 359	160	1	1.9
106 181 362	160	2	2.9
106 181 365	180	1	2.1
106 181 368	180	2	3.4

CLASSICAL TIMING BELT PULLEYS

- Polyurethane reinforced with steel tension cord
- Conform to ISO 5296, BS 4548



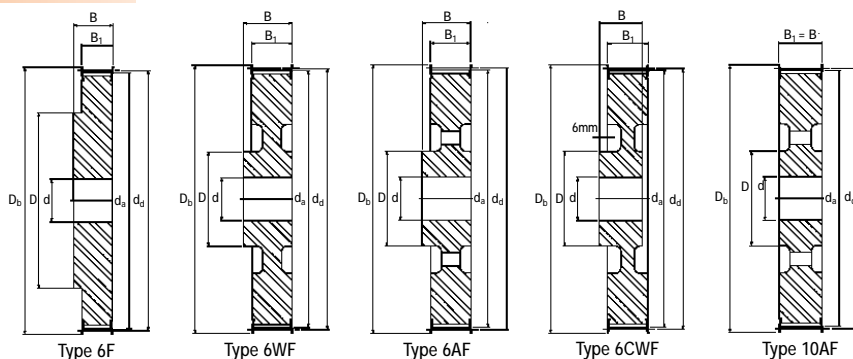
Type : **XL** - Pitch 5.08mm for belt width 025, 031, 037

Order Code	Nr. of Teeth	Type	Material	d_d	d_a	D_B	b_1	B	D	Pilot Bore d	Finished Bore d_{max}	Grub Screw	Weight (kg)
106 176 510	10	6F	St	16.17	15.66	23	14.3	19.8	9.5	5.0	6.4	M3	0.02
106 176 511	11	6F	St	17.79	17.28	23	14.3	19.8	9.5	5.0	6.4	M3	0.02
106 176 512	12	6F	St	19.40	18.89	25	14.3	19.8	12.7	5.0	7.9	M3	0.03
106 176 514	14	6F	St	22.64	22.13	28	14.3	19.8	14.3	6.0	9.5	M4	0.04
106 176 515	15	6F	St	24.26	23.75	28	14.3	19.8	15.9	6.0	11.1	M4	0.04
106 176 516	16	6F	St	25.87	25.36	32	14.3	19.8	17.5	6.0	12.7	M4	0.05
106 176 518	18	6F	St	29.11	28.60	36	14.3	19.8	19.0	6.0	14.3	M4	0.06
106 176 520	20	6F	St	32.34	31.83	38	14.3	22.2	23.8	6.0	17.5	M4	0.08
106 176 521	21	6F	St	33.96	33.45	38	14.3	22.2	23.8	6.0	17.5	M4	0.09
106 176 522	22	6F	St	35.57	35.06	42	14.3	22.2	25.4	6.0	19.1	M4	0.10
106 176 524	24	6F	St	38.81	38.30	44	14.3	22.2	27.0	6.0	20.6	M4	0.12
106 176 526	26	6F	St	42.04	41.53	48	14.3	22.2	30.0	6.0	23.0	M4	0.14
106 176 528	28	6F	St	45.28	44.77	51	14.3	22.2	30.2	6.0	23.0	M4	0.16
106 176 530	30	6F	St	48.51	48.0	54	14.3	22.2	34.9	6.0	23.0	M4	0.19
106 176 532	32	6	Al	51.74	51.23	-	14.3	25.4	38.0	8.0	23.0	M4	0.11
106 176 536	36	6	Al	58.21	57.70	-	14.3	25.4	38.0	8.0	23.0	M4	0.13
106 176 540	40	6	Al	64.68	64.17	-	14.3	25.4	38.0	8.0	23.0	M4	0.17
106 176 542	42	6W	Al	67.91	67.40	-	14.3	25.4	38.0	8.0	23.0	M4	0.13
106 176 544	44	6W	Al	71.15	70.64	-	14.3	25.4	38.0	8.0	23.0	M4	0.15

Type : **L** - Pitch 9.525mm for belt width 050

Order Code	Nr. of Teeth	Type	Material	d_d	d_a	D_B	b_1	B	D	Pilot Bore d	Finished Bore d_{max}	Grub Screw	Weight (kg)
106 176 710	10	6F	St	30.32	29.56	36	19	26	22	6.0	13.0	-	0.11
106 176 712	12	6F	St	36.38	35.62	42	19	26	28	6.0	17.0	-	0.19
106 176 713	13	6F	St	39.41	38.65	44	19	26	30	6.0	19.0	-	0.21
106 176 714	14	6F	St	42.45	41.68	48	19	26	33	8.0	20.0	-	0.25
106 176 715	15	6F	St	45.48	44.72	51	19	26	36	8.0	23.0	-	0.30
106 176 716	16	6F	St	48.51	47.75	54	19	26	38	8.0	23.0	-	0.33
106 176 717	17	6F	St	51.54	50.78	57	19	26	40	10.0	24.0	-	0.36
106 176 718	18	6F	St	54.57	53.81	60	19	26	40	10.0	24.0	-	0.41
106 176 719	19	6F	St	57.61	56.84	60	19	26	40	10.0	24.0	-	0.45
106 176 720	20	6F	St	60.64	59.88	66	19	26	46	10.0	28.0	-	0.50
106 176 721	21	6F	St	63.67	62.91	71	19	26	46	10.0	28.0	-	0.55
106 176 722	22	6F	St	66.70	65.94	75	19	26	50	10.0	30.0	-	0.62
106 176 724	24	6F	St	72.77	72.00	79	19	26	50	12.0	30.0	-	0.68
106 176 726	26	6F	St	78.83	78.07	87	19	26	50	12.0	30.0	-	0.82
106 176 728	28	6F	St	84.89	84.13	91	19	26	50	12.0	30.0	-	0.92
106 176 730	30	6F	St	90.96	90.20	97	19	26	50	12.0	30.0	-	1.10
106 176 732	32	6F	St	97.02	96.26	103	19	26	50	12.0	30.0	-	1.20
106 176 736	36	6WF	GG	109.15	108.24	115	19	26	50	12.0	30.0	-	1.00
106 176 740	40	6WF	GG	121.28	120.51	127	19	26	50	12.0	30.0	-	1.10
106 176 744	44	6AF	GG	133.40	132.64	140	19	26	50	12.0	30.0	-	1.20

CLASSICAL TIMING BELT PULLEYS



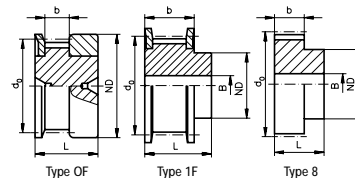
Type : L - Pitch 9.525mm for belt width 075

Order Code	Nr. of Teeth	Type	Material	d_d	d_a	D_B	b_1	B	D	Pilot Bore d	Finished Bore d_{max}	Grub Screw	Weight (kg)
106 176 810	10	6F	St	30.32	29.59	36	25	32	22	6.0	13.0	-	0.15
106 176 812	12	6F	St	36.38	35.62	42	25	32	28	8.0	17.0	-	0.23
106 176 813	13	6F	St	39.41	38.65	44	25	32	30	8.0	19.0	-	0.26
106 176 814	14	6F	St	42.45	41.68	48	25	32	33	8.0	20.0	-	0.32
106 176 815	15	6F	St	45.48	44.72	51	25	32	36	8.0	23.0	-	0.35
106 176 816	16	6F	St	48.51	47.75	54	25	32	38	8.0	23.0	-	0.42
106 176 817	17	6F	St	51.54	50.78	57	25	32	40	10.0	24.0	-	0.45
106 176 818	18	6F	St	54.57	53.81	60	25	32	40	10.0	24.0	-	0.51
106 176 819	19	6F	St	57.61	56.84	60	25	32	40	10.0	24.0	-	0.57
106 176 820	20	6F	St	60.64	59.88	66	25	32	46	10.0	28.0	-	0.63
106 176 821	21	6F	St	63.67	62.91	71	25	32	46	10.0	28.0	-	0.70
106 176 822	22	6F	St	66.70	65.94	75	25	32	50	10.0	30.0	-	0.75
106 176 824	24	6F	St	72.77	72.00	79	25	32	50	12.0	30.0	-	0.85
106 176 826	26	6F	St	78.83	78.07	87	25	32	50	12.0	30.0	-	1.00
106 176 828	28	6F	St	84.89	84.13	91	25	32	50	12.0	30.0	-	1.20
106 176 830	30	6F	St	90.96	90.20	97	25	32	50	12.0	30.0	-	1.40
106 176 832	32	6F	St	97.02	96.26	103	25	32	50	12.0	30.0	-	1.50
106 176 836	36	6WF	GG	109.15	108.24	115	25	32	55	12.0	32.0	-	1.30
106 176 840	40	6WF	GG	121.28	120.51	127	25	32	60	12.0	35.0	-	1.60
106 176 844	44	6AF	GG	133.40	132.64	140	25	32	60	12.0	35.0	-	1.70

Type : L - Pitch 9.525mm for belt width 100

Order Code	Nr. of Teeth	Type	Material	d_d	d_a	D_B	b_1	B	D	Pilot Bore d	Finished Bore d_{max}	Grub Screw	Weight (kg)
106 176 910	10	6F	St	30.32	29.59	36	31	38	22	6.0	13.0	-	0.81
106 176 912	12	6F	St	36.38	35.62	42	31	38	28	8.0	17.0	-	0.29
106 176 913	13	6F	St	39.41	38.65	44	31	38	30	8.0	19.0	-	0.30
106 176 914	14	6F	St	42.45	41.68	48	31	38	33	8.0	20.0	-	0.38
106 176 915	15	6F	St	45.48	44.72	51	31	38	36	8.0	23.0	-	0.40
106 176 916	16	6F	St	48.51	47.75	54	31	38	38	8.0	23.0	-	0.41
106 176 917	17	6F	St	51.54	50.78	57	31	38	40	10.0	24.0	-	0.54
106 176 918	18	6F	St	54.57	53.81	60	31	38	40	10.0	24.0	-	0.62
106 176 919	19	6F	St	57.61	56.84	60	31	38	40	10.0	24.0	-	0.69
106 176 920	20	6F	St	60.64	59.88	66	31	38	46	10.0	28.0	-	0.76
106 176 921	21	6F	St	63.67	62.91	71	31	38	46	10.0	28.0	-	0.82
106 176 922	22	6F	St	66.70	65.94	75	31	38	50	10.0	30.0	-	0.92
106 176 924	24	6F	St	72.77	72.00	79	31	38	50	12.0	30.0	-	1.10
106 176 926	26	6F	St	78.83	78.07	87	31	38	50	12.0	30.0	-	1.30
106 176 928	28	6F	St	84.89	84.13	91	31	38	50	12.0	30.0	-	1.40
106 176 930	30	6F	St	90.96	90.20	97	31	38	50	12.0	30.0	-	1.70
106 176 932	32	6F	St	97.02	96.26	103	31	38	50	12.0	30.0	-	1.80
106 176 936	36	6CWF	GG	109.15	108.24	115	31	32	55	12.0	32.0	-	1.50
106 176 940	40	6CWF	GG	121.28	120.51	127	31	32	60	12.0	35.0	-	1.80
106 176 944	44	10AF	GG	133.40	132.64	140	31	32	60	12.0	35.0	-	1.90

HTD TIMING BELT PULLEYS



Material : Aluminium

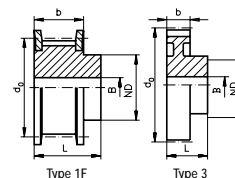
Pitch : 3mm, Width : 9mm

Order Code	Teeth	Type	External Diameter		d ₀	ND	b	L	Pilot Bore	Max Bore B	Weight (g)
			Crown Gear	Flanged Wheel							
106 170 210	10	OF	8.79	13.0	9.55	13.0	10.2	17.5	-	3.5	3.5
106 170 212	12	OF	10.70	15.0	11.46	15.0	10.2	17.5	-	5.0	5.2
106 170 214	14	OF	12.61	16.0	13.37	16.0	10.2	17.5	-	6.0	6.6
106 170 215	15	OF	13.56	17.5	14.32	17.5	10.2	17.5	-	7.0	7.7
106 170 216	16	1F	14.52	17.5	15.28	10.0	12.8	20.6	4.0	5.5	6.6
106 170 218	18	1F	16.43	20.0	17.19	11.0	12.8	20.6	6.0	6.5	7.7
106 170 220	20	1F	18.34	23.0	19.10	13.0	12.8	20.6	6.0	8.0	10.4
106 170 221	21	1F	19.29	25.0	20.05	14.0	12.8	20.6	6.0	9.0	12.5
106 170 222	22	1F	20.25	25.0	21.01	14.0	12.8	20.6	6.0	9.0	14
106 170 224	24	1F	22.16	25.0	22.92	14.0	12.8	20.6	6.0	9.0	15
106 170 226	26	1F	24.07	28.0	24.83	16.0	12.8	20.6	6.0	10.0	18.6
106 170 228	28	1F	25.98	32.0	26.74	18.0	12.8	20.6	6.0	11.0	23
106 170 230	30	1F	27.89	32.0	28.65	20.0	12.8	20.6	6.0	12.5	27
106 170 232	32	1F	29.80	36.0	30.56	22.0	12.8	20.6	6.0	13.5	32
106 170 236	36	1F	33.62	39.0	34.38	26.0	13.4	22.2	6.0	15.0	44.2
106 170 240	40	1F	37.44	42.0	38.20	28.0	13.4	22.2	6.0	16.5	53
106 170 244	44	1F	41.26	48.0	42.02	33.0	13.4	22.2	6.0	20.0	66
106 170 248	48	8	45.08	-	45.84	33.0	13.4	22.2	8.0	20.0	72
106 170 260	60	8	56.54	-	57.30	33.0	13.4	22.2	8.0	20.0	105
106 170 272	72	8	67.99	-	68.75	33.0	13.4	22.2	8.0	20.0	146

Pitch : 3mm, Width : 15mm

Order Code	Teeth	Type	External Diameter		d ₀	ND	b	L	Pilot Bore	Max Bore B	Weight (g)
			Crown Gear	Flanged Wheel							
106 170 310	10	OF	8.79	13.0	9.55	13.0	17.0	26.0	-	3.5	5
106 170 312	12	OF	10.70	15.0	11.46	15.0	17.0	26.0	-	5.0	7.4
106 170 314	14	OF	12.61	16.0	13.37	16.0	17.0	26.0	-	6.0	9.4
106 170 315	15	OF	13.56	17.5	14.32	17.5	17.0	26.0	-	7.0	11
106 170 316	16	1F	14.52	17.5	15.28	10.0	19.5	26.0	4.0	5.5	8.5
106 170 318	18	1F	16.43	20.0	17.19	11.0	19.5	26.0	6.0	6.5	10.2
106 170 320	20	1F	18.34	23.0	19.10	13.0	19.5	26.0	6.0	8.0	13.8
106 170 321	21	1F	19.29	25.0	20.05	14.0	19.5	26.0	6.0	9.0	16.2
106 170 322	22	1F	20.25	25.0	21.01	14.0	19.5	26.0	6.0	9.0	17.2
106 170 324	24	1F	22.16	25.0	22.92	14.0	19.5	26.0	6.0	9.0	20
106 170 326	26	1F	24.07	28.0	24.83	16.0	19.5	26.0	6.0	10.0	25
106 170 328	28	1F	25.98	32.0	26.74	18.0	19.5	26.0	6.0	11.0	31
106 170 330	30	1F	27.89	32.0	28.65	20.0	19.5	26.0	6.0	12.5	35
106 170 332	32	1F	29.80	36.0	30.56	22.0	19.5	26.0	6.0	13.5	41
106 170 336	36	1F	33.62	39.0	34.38	26.0	20.0	30.0	6.0	15.0	60
106 170 340	40	1F	37.44	42.0	38.20	28.0	20.0	30.0	6.0	16.5	72
106 170 344	44	1F	41.26	48.0	42.02	33.0	20.0	30.0	6.0	20.0	95
106 170 348	48	8	45.08	-	45.84	33.0	20.0	30.0	8.0	20.0	101
106 170 360	60	8	56.54	-	57.30	33.0	20.0	30.0	8.0	20.0	151
106 170 372	72	8	67.99	-	68.75	33.0	20.0	30.0	8.0	20.0	212

HTD TIMING BELT PULLEYS



Material : Up to Ø56mm - Steel 9 SMn 28 Pb
 Over Ø56mm & up to 40 teeth - Steel C43
 Over 40 teeth - Aluminium

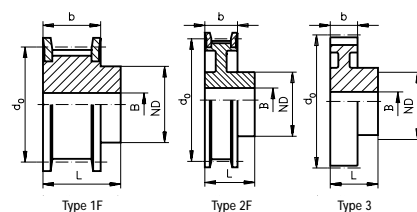
Pitch : 5mm, Width : 9mm

Order Code	Teeth	Type	External Diameter		d ₀	ND	L	Pilot Bore	Max Bore B	Weight (g)
			Crown Gear	Flanged Wheel						
106 172 212	12	1F	17.96	23.0	19.10	13.0	20.0	4.0	8.0	27
106 172 214	14	1F	21.14	25.0	22.28	14.0	20.0	6.0	9.0	34
106 172 215	15	1F	22.73	28.0	23.87	16.0	20.0	6.0	10.0	44
106 172 216	16	1F	24.32	28.0	25.46	16.5	20.0	6.0	10.5	49
106 172 218	18	1F	27.51	32.0	28.65	20.0	20.0	6.0	12.5	69
106 172 220	20	1F	30.69	36.0	31.83	23.0	22.5	6.0	13.5	96
106 172 221	21	1F	32.28	38.0	33.42	24.0	22.5	6.0	14.0	108
106 172 222	22	1F	33.87	39.0	35.01	25.5	22.5	6.0	15.0	118
106 172 224	24	1F	37.06	42.0	38.20	27.0	22.5	6.0	16.0	142
106 172 226	26	1F	40.24	44.0	41.38	30.0	22.5	6.0	18.0	168
106 172 228	28	1F	43.42	48.0	44.56	30.5	22.5	6.0	18.0	192
106 172 230	30	1F	46.60	51.0	47.75	35.0	22.5	6.0	21.0	232
106 172 232	32	1F	49.79	54.0	50.93	38.0	22.5	6.0	23.0	267
106 172 236	36	1F	56.16	60.0	57.30	38.0	22.5	6.0	23.0	325
106 172 240	40	1F	62.52	71.0	63.66	38.0	22.5	6.0	23.0	396
106 172 244	44	3	68.89	-	70.03	38.0	25.5	8.0	23.0	142
106 172 248	48	3	75.25	-	76.39	45.0	22.5	8.0	28.0	179
106 172 260	60	3	94.35	-	95.49	45.0	25.5	8.0	28.0	227
106 172 272	72	3	113.45	-	114.59	45.0	25.5	8.0	28.0	281

Pitch : 5mm, Width : 15mm

Order Code	Teeth	Type	External Diameter		d ₀	ND	L	Pilot Bore	Max Bore B	Weight (g)
			Crown Gear	Flanged Wheel						
106 172 312	12	1F	17.96	23.0	19.10	13.0	26.0	-	8.0	37
106 172 314	14	1F	21.14	25.0	22.28	14.0	26.0	6.0	9.0	46
106 172 315	15	1F	22.73	28.0	23.87	16.0	26.0	6.0	10.0	60
106 172 316	16	1F	24.32	28.0	25.46	16.5	26.0	6.0	10.5	64
106 172 318	18	1F	27.51	32.0	28.65	20.0	26.0	6.0	12.5	89
106 172 320	20	1F	30.69	36.0	31.83	23.0	26.0	6.0	13.5	118
106 172 321	21	1F	32.28	38.0	33.42	24.0	26.0	6.0	14.0	130
106 172 322	22	1F	33.87	39.0	35.01	25.5	26.0	6.0	15.0	144
106 172 324	24	1F	37.06	42.0	38.20	27.0	28.0	6.0	16.0	181
106 172 326	26	1F	40.24	44.0	41.38	30.0	28.0	6.0	18.0	215
106 172 328	28	1F	43.42	48.0	44.56	30.5	28.0	6.0	18.0	252
106 172 330	30	1F	46.60	51.0	47.75	35.0	28.0	6.0	21.0	298
106 172 332	32	1F	49.79	54.0	50.93	38.0	28.0	8.0	23.0	344
106 172 336	36	1F	56.16	60.0	57.30	38.0	28.0	8.0	23.0	420
106 172 340	40	1F	62.52	71.0	63.66	38.0	28.0	8.0	23.0	467
106 172 344	44	3	68.89	-	70.03	38.0	30.0	8.0	23.0	182
106 172 348	48	3	75.25	-	76.39	38.0	30.0	8.0	23.0	198
106 172 360	60	3	94.35	-	95.49	50.0	30.0	8.0	30.0	312
106 172 372	72	3	113.45	-	114.59	50.0	30.0	8.0	30.0	387

HTD TIMING BELT PULLEYS



Material : Up to Ø56mm - Steel 9 SMn 28 Pb
 Over Ø56mm & up to 72 teeth - Steel C43
 Over 72 teeth - Cast Iron

Pitch : 8mm, Width : 20mm

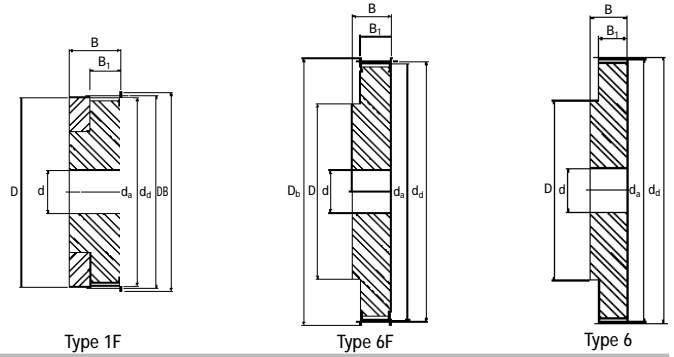
Order Code	Teeth	Type	External Diameter		d ₀	ND	L	Pilot Bore	Max Bore B	Weight (g)
			Crown Gear	Flanged Wheel						
106 174 111	22	1F	54.65	60	56.02	43	-	12	25	535
106 174 112	24	1F	59.75	66	61.12	45	-	12	28	645
106 174 113	26	1F	64.85	70	66.21	48	-	12	30	753
106 174 114	28	1F	70.08	75	71.30	50	-	15	30	859
106 174 115	30	1F	75.13	82.5	76.39	55	-	15	32	1017
106 174 116	32	1F	80.16	87	81.49	60	-	15	35	1188
106 174 117	34	1F	85.22	91	86.58	66	-	15	42	1358
106 174 118	36	1F	90.30	97	91.67	70	-	15	42	1547
106 174 119	38	1F	95.39	102	96.77	75	-	15	45	1744
106 174 120	40	1F	100.49	106	101.86	75	-	15	45	1902
106 174 122	44	1F	110.67	120	112.05	75	-	15	45	2268
106 174 124	48	1F	120.86	128	122.23	75	-	15	45	2661
106 174 128	56	2F	141.23	150	142.60	80	116	15	45	2853
106 174 132	64	2F	161.60	168	162.97	80	137	15	45	3282
106 174 136	72	2F	181.97	192	183.35	80	158	15	45	3824
106 174 140	80	3	202.35	-	203.72	90	180	15	50	4317
106 174 145	90	3	227.81	-	229.18	90	204	15	50	5041

Pitch : 8mm, Width : 30mm

Order Code	Teeth	Type	External Diameter		d ₀	ND	L	Pilot Bore	Max Bore B	Weight (g)
			Crown Gear	Flanged Wheel						
106 174 211	22	1F	54.65	60	56.02	43	-	12	25	683
106 174 212	24	1F	59.75	66	61.12	45	-	12	28	827
106 174 213	26	1F	64.85	70	66.21	48	-	12	30	979
106 174 214	28	1F	70.08	75	71.30	50	-	15	30	1112
106 174 215	30	1F	75.13	82.5	76.39	55	-	15	32	1314
106 174 216	32	1F	80.16	87	81.49	60	-	15	35	1521
106 174 217	34	1F	85.22	91	86.58	70	-	15	42	1742
106 174 218	36	1F	90.30	97	91.67	70	-	15	42	1981
106 174 219	38	1F	95.39	102	96.77	75	-	15	45	2232
106 174 220	40	1F	100.49	106	101.86	75	-	15	45	2472
106 174 222	44	1F	110.67	120	112.05	75	-	15	45	2948
106 174 224	48	1F	120.86	128	122.23	75	-	15	45	3471
106 174 228	56	2F	141.23	150	142.60	90	116	15	50	4005
106 174 232	64	2F	161.60	168	162.97	90	137	15	50	4556
106 174 236	72	2F	181.97	192	183.35	95	158	15	55	5408
106 174 240	80	3	202.35	-	203.72	100	180	15	60	5712
106 174 245	90	3	227.81	-	229.18	100	204	15	60	6645

METRIC TIMING BELT PULLEYS

- To suit polyurethane timing belts (see page 80)
- Material : Aluminium



Section T 2.5 Pitch : 2.5mm for belt width 4 & 6mm

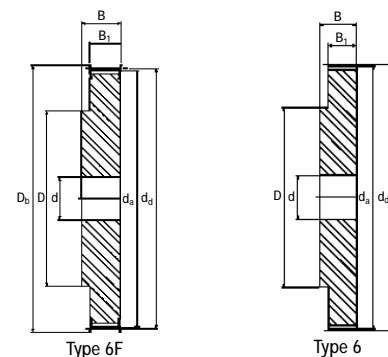
Order Code	Teeth	Type	d_d	d_a	D_B	b_1	B	D	Pilot Bore d	Finished Bore d_{max}	Weight (kg)
106 192 012	12	1F	9.55	9.00	13.0	9	16	12	-	3	0.003
106 192 014	14	1F	11.14	10.60	15.0	9	16	14	-	4	0.004
106 192 015	15	1F	11.94	11.40	15.0	9	16	15	-	4	0.005
106 192 016	16	1F	12.73	12.20	16.0	9	16	16	-	5	0.005
106 192 018	18	6F	14.32	13.80	17.5	10	16	9.5	4	6	0.006
106 192 019	19	6F	15.12	14.60	18.0	10	16	9.5	4	6	0.007
106 192 020	20	6F	15.92	15.40	19.5	10	16	10	4	6	0.008
106 192 022	22	6F	17.51	17.00	23.0	10	16	10	4	6	0.009
106 192 024	24	6F	19.10	18.55	23.0	10	16	12	4	6	0.012
106 192 025	25	6F	19.90	19.35	23.0	10	16	12	4	8	0.013
106 192 026	26	6F	20.70	20.15	25.0	10	16	13	4	8	0.014
106 192 028	28	6F	22.28	21.75	25.0	10	16	13	4	8	0.016
106 192 030	30	6F	23.87	23.35	28.0	10	16	16	6	10	0.018
106 192 032	32	6F	25.47	24.95	32.0	10	16	16	6	10	0.020
106 192 036	36	6F	28.65	28.10	36.0	10	16	20	6	12	0.026
106 192 040	40	6F	31.83	31.30	38.0	10	16	20	6	12	0.032
106 192 044	44	6F	35.02	34.50	42.0	10	16	24	6	14	0.040
106 192 048	48	6	38.20	37.70	-	10	16	26	6	15	0.048
106 192 060	60	6	47.75	47.25	-	10	16	34	8	18	0.073

Section T 5 Pitch : 5mm for belt width 10mm

Order Code	Teeth	Type	d_d	d_a	D_B	b_1	B	D	Pilot Bore d	Finished Bore d_{max}	Weight (kg)
106 192 210	10	6F	15.92	15.05	19.5	15	21	8	-	5	0.012
106 192 212	12	6F	19.01	18.25	23.0	15	21	10	-	6	0.016
106 192 214	14	6F	22.29	21.45	25.0	15	21	13	-	8	0.019
106 192 215	15	6F	23.88	23.05	28.0	15	21	16	6	10	0.021
106 192 216	16	6F	25.47	24.60	32.0	15	21	18	6	11	0.025
106 192 218	18	6F	28.65	27.80	32.0	15	21	19	6	12	0.031
106 192 219	19	6F	30.25	29.40	36.0	15	21	22	6	12	0.036
106 192 220	20	6F	31.83	31.00	36.0	15	21	23	6	14	0.038
106 192 222	22	6F	35.12	34.25	38.0	15	21	24	6	15	0.046
106 192 224	24	6F	38.21	37.40	42.0	15	21	26	6	15	0.054
106 192 225	25	6F	39.80	39.00	44.0	15	21	26	6	15	0.058
106 192 226	26	6F	41.47	40.60	44.0	15	21	26	6	16	0.062
106 192 227	27	6F	42.98	42.20	48.0	15	21	30	8	18	0.064
106 192 228	28	6F	44.62	43.75	48.0	15	21	32	8	18	0.071
106 192 230	30	6F	47.76	46.95	51.0	15	21	34	8	18	0.075
106 192 232	32	6F	50.94	50.10	54.0	15	21	38	8	22	0.088
106 192 236	36	6F	57.31	56.45	63.0	15	21	38	8	22	0.114
106 192 240	40	6F	63.66	62.85	66.0	15	21	40	8	23	0.138
106 192 242	42	6F	66.87	66.0	71.0	15	21	40	8	24	0.180
106 192 244	44	6	70.07	69.20	-	15	21	45	8	26	0.185
106 192 248	48	6	76.42	75.55	-	15	21	50	8	28	0.200
106 192 260	60	6	95.52	94.65	-	15	21	65	8	35	0.307

METRIC TIMING BELT PULLEYS

- To suit polyurethane timing belts (see page 80)
- Material : Aluminium



Section T 5 Pitch : 5mm for belt width 16mm

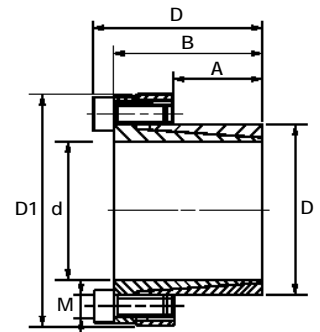
Order Code	Teeth	Type	d_d	d_a	D_B	b_1	B	D	Pilot Bore d	Finished Bore d_{max}	Weight (kg)
106 192 410	10	6F	15.92	15.05	19.5	21	27	8	-	5	0.016
106 192 412	12	6F	19.01	18.25	23.0	21	27	10	-	6	0.002
106 192 414	14	6F	22.29	21.40	25.0	21	27	13	-	8	0.026
106 192 415	15	6F	23.88	23.05	28.0	21	27	16	6	10	0.029
106 192 416	16	6F	25.47	24.60	32.0	21	27	18	6	11	0.035
106 192 418	18	6F	28.65	27.80	32.0	21	27	19	6	12	0.043
106 192 419	19	6F	30.25	29.40	36.0	21	27	22	6	12	0.049
106 192 420	20	6F	31.83	31.00	36.0	21	27	23	6	14	0.053
106 192 422	22	6F	35.12	34.25	38.0	21	27	24	6	15	0.054
106 192 424	24	6F	38.21	37.40	42.0	21	27	26	6	15	0.076
106 192 425	25	6F	39.80	39.00	44.0	21	27	26	6	15	0.081
106 192 426	26	6F	41.47	40.60	44.0	21	27	26	6	16	0.085
106 192 427	27	6F	42.98	42.20	48.0	21	27	30	8	18	0.090
106 192 428	28	6F	44.62	43.75	48.0	21	27	32	8	18	0.092
106 192 430	30	6F	47.76	46.95	51.0	21	27	34	8	18	0.105
106 192 432	32	6F	50.94	50.10	54.0	21	27	38	8	22	0.123
106 192 436	36	6F	57.31	56.45	63.0	21	27	38	8	22	0.160
106 192 440	40	6F	63.66	62.85	66.0	21	27	40	8	23	0.193
106 192 442	42	6F	66.87	66.0	71.0	21	27	40	8	24	0.205
106 192 444	44	6	70.07	69.20	-	21	27	45	8	26	0.228
106 192 448	48	6	76.42	75.55	-	21	27	50	8	28	0.280
106 192 460	60	6	95.52	94.65	-	21	27	65	8	35	0.430

7

PULLEY CLAMPING ELEMENTS

This keyless shaft-pulley connection eliminates play between the shaft and the hub and distributes the power transmission over the entire surface whereas with a key connection, the transmission is concentrated on a limited area only. This allows savings in materials because the shaft diameters can be designed smaller and making these elements ideal for heavy transmissions, with overload or continuous reversing, or where required, with more hubs mounted on a single shaft.

Simple mounting and dismounting means easy and quick changing on the shaft; the high pressure between the contact surfaces helps avoid corrosion and, years after installation, allows a quick removal of the pulley.



Order Code	D	d max	D1	A	B	L (Nm)	Nr. of Screws	M	T _S	p (N/mm ²)
106 026 014	26	20	40.5	14	27.5	31.5	6	4	5	100
106 038 014	38	30	57	14	33	39	4	6	17	104
106 038 027	38	30	57	27	46	52	6	6	17	81
106 052 027	52	42	70.5	27	46	52	8	6	17	79
106 072 037	72	60	96.5	37	60	68	10	8	41	99

Order Code	Bore dia d																							
	11	12	14	15	16	18	19	20	22	24	25	28	30	32	35	38	40	42	45	48	50	55	60	
106 026 014	T(Nm)	80	87	102	108	116	130	138	145															
	F (kN)	14	14	14	14	14	14	14	14															
106 038 014	T(Nm)							210	110	242	265	276	309	331										
	F (kN)							22	22	22	22	22	22	22										
106 038 027	T(Nm)							314	331	364	397	413	465	479										
	F (kN)									34	34	34	34	34	34	34								
106 052 027	T(Nm)									529	552	618	662	706	772	839	883	926						
	F (kN)											44	44	44	44	44	44	44	44	44				
106 072 037	T(Nm)											1462	1567	1671	1828	1985	2089	2194	2350	2506	2611	2872	3133	
	F (kN)											105	105	105	105	105	105	105	105	105	105	105	105	

Key:

T_S = Screw tightening torque

T = Torque transmissible with tightening torque T_S

F = Axial force transmissible with tightening torque T_S

P = Hub surface pressure

TAPER BUSHES

- Metric Bores
- Keyways to DIN 6885 Part 1
- Material : GG 20 - DIN 1961

Inch bores available on request



Size Ref.	1008	1108	1210	1215	1310
Length	22.30	22.30	25.40	38.10	25.40
Weight at min Dia	0.12	0.16	0.28	0.39	0.32
Tightening Torque Nm	5.7	5.7	20	20	20

Order Code	Bore	Order Code	Bore	Order Code	Bore	Order Code	Bore	Order Code	Bore
125 100 810	10	125 110 810	10	125 121 011	11	125 121 511	11	125 131 014	14
125 100 811	11	125 110 811	11	125 121 012	12	125 121 512	12	125 131 016	16
125 100 812	12	125 110 812	12	125 121 014	14	125 121 514	14	125 131 018	18
125 100 814	14	125 110 814	14	125 121 016	16	125 121 516	16	125 131 019	19
125 100 816	16	125 110 816	16	125 121 018	18	125 121 518	18	125 131 020	20
125 100 818	18	125 110 818	18	125 121 019	19	125 121 519	19	125 131 022	22
125 100 819	19	125 110 819	19	125 121 020	20	125 121 520	20	125 131 024	24
125 100 820	20	125 110 820	20	125 121 022	22	125 121 522	22	125 131 025	25
125 100 822	22	125 110 822	22	125 121 024	24	125 121 524	24	125 131 028	28
125 100 824	24	125 110 824	24	125 121 025	25	125 121 525	25	125 131 030	30
125 100 825	25	125 110 825	25	125 121 028	28	125 121 528	28	125 131 032	32
		125 110 828	28	125 121 030	30	125 121 530	30	125 131 035	35
				125 121 032	32	125 121 532	32		

Size Ref.	1610	1615	2012	2517	3020
Length	25.40	38.10	31.80	44.50	50.80
Weight at min Dia	0.41	0.60	0.75	1.06	2.50
Tightening Torque Nm	20	20	31	49	92

Order Code	Bore	Order Code	Bore	Order Code	Bore	Order Code	Bore	Order Code	Bore
125 161 014	14	125 161 514	14	125 201 214	14	125 251 716	16	125 302 025	25
125 161 016	16	125 161 516	16	125 201 216	16	125 251 718	18	125 302 028	28
125 161 018	18	125 161 518	18	125 201 218	18	125 251 719	19	125 302 030	30
125 161 019	19	125 161 519	19	125 201 219	19	125 251 720	20	125 302 032	32
125 161 020	20	125 161 520	20	125 201 220	20	125 251 722	22	125 302 035	35
125 161 022	22	125 161 522	22	125 201 222	22	125 251 724	24	125 302 038	38
125 161 024	24	125 161 524	24	125 201 224	24	125 251 725	25	125 302 040	40
125 161 025	25	125 161 525	25	125 201 225	25	125 251 728	28	125 302 042	42
125 161 028	28	125 161 528	28	125 201 228	28	125 251 730	30	125 302 045	45
125 161 030	30	125 161 530	30	125 201 230	30	125 251 732	32	125 302 048	48
125 161 032	32	125 161 532	32	125 201 232	32	125 251 735	35	125 302 050	50
125 161 035	35	125 161 535	35	125 201 235	35	125 251 738	38	125 302 055	55
125 161 038	38	125 161 538	38	125 201 238	38	125 251 740	40	125 302 060	60
125 161 040	40	125 161 540	40	125 201 240	40	125 251 742	42	125 302 065	65
125 161 042	42	125 161 542	42	125 201 242	42	125 251 745	45	125 302 070	70
				125 201 245	45	125 251 748	48		
				125 201 248	48	125 251 750	50		
				125 201 250	50				