

This Drawing is the property of J.S.T.(U.K.) Ltd.
It must not be copied or used for manufacturing
without written permission from J.S.T.(U.K.) Ltd.

**UNCONTROLLED
CUSTOMER ISSUE**

Page 1 / 2

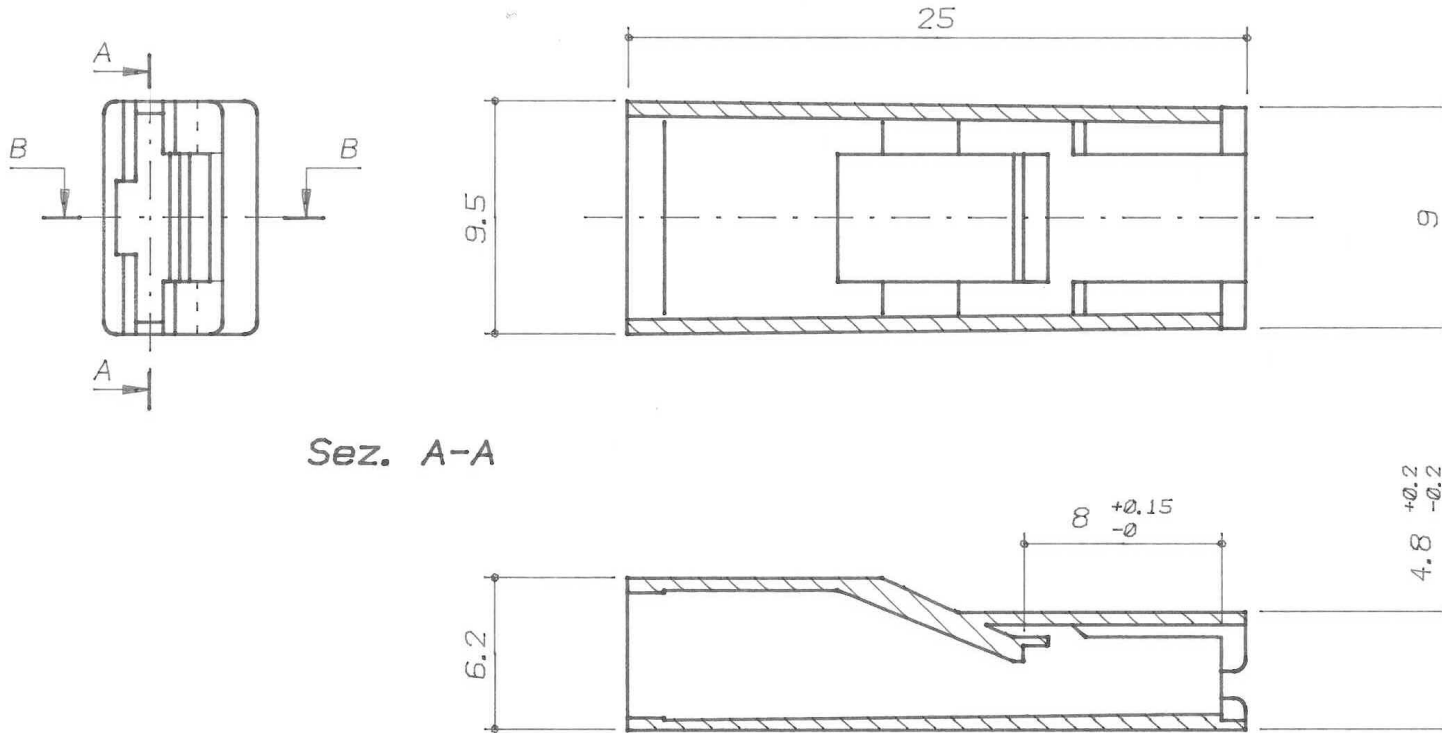
CS-63N004V0	63N004V0	PA66	UL94V-0	Natural	110	--	
CS-63N004STY	63N004STY	PA46	UL94V-2	Natural	150	--	
01022-250 Red	63N304	PA66	UL94V-2	Red	110	E172855 (M)	
01022-250 Green	63N404	PA66	UL94V-2	Green	110	E172855 (M)	
01022-250 Brown	63NMR04	PA66	UL94V-2	Brown	110	E172855 (M)	
01022-250 Blue	63N604	PA66	UL94V-2	Blue	110	E172855 (M)	
01022-250 Black	63N504	PA66	UL94V-2	Black	110	E172855 (M)	
01022-250	63N004	PA66	UL94V-2	Natural	110	E172855 (M)	
JST Part Number	Mfg Number	Material	Flame Class	Colour	Max Operating Temp (°C)	UL Card No.	//

Revision Record		
	Add suffixes; 304,004STY, 004V0	31.10.02
	Add suffixes; 004,504,604,MR04,404	31.10.02
	Modification Detail	Date
<i>JST</i>		

Part Description & General Details:		
Housing for 6.3 (.250) receptacle. Applicable JST terminal; STO-**(*)-250*(-*)		
Series:	63 Series	
Drawing Ref:	CS63N004-241194	
Issues by:	ZG	31.10.02
Approved by:	AR	31.10.02

This Drawing is the property of J.S.T.(U.K.) Ltd.
It must not be copied or used for manufacturing
without written permission from J.S.T.(U.K.) Ltd.

**UNCONTROLLED
CUSTOMER ISSUE**



Sez. A-A

Revision Record		
	Modification Detail	Date
	Add suffixes; 304,004STY, 004V0	31.10.02
	Add suffixes; 004,504,604,MR04,404	31.10.02



Part Description & General Details:		
Housing for 6.3 (.250) receptacle. Applicable JST terminal; STO-**(*)-250*(-*)		
Series:	63 Series	
Drawing Ref:	CS63N004-241194	
Issues by:	ZG	31.10.02
Approved by:	AR	31.10.02