

## AluPlus ToolCase

### Tool cases in aluminium look

These top-of-the-range cases – practical and sturdy aids for craft and hobby applications.

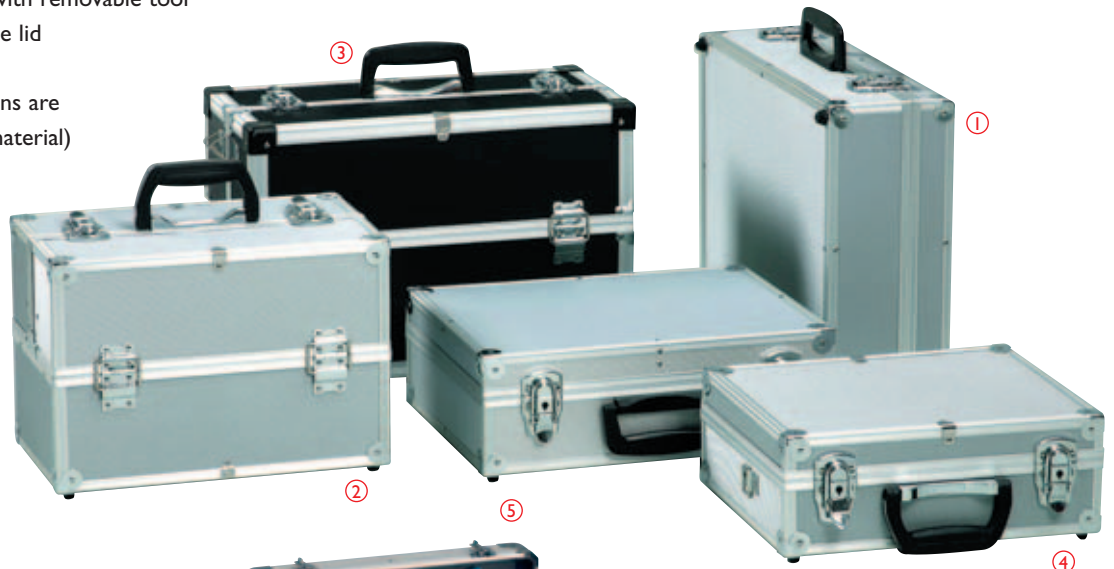
- + Individual partitioning
- + Partly equipped with removable carrying belt
- + Some types equipped with removable tool plate integrated into the lid
- + Key-lockable
- + Customer's specifications are possible (colour, size, material)



Sturdy hinges and edges



All cases are lockable

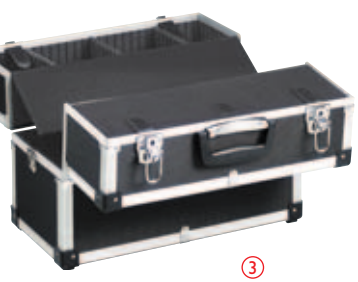


Our range ›AluPlus ToolCase‹ is being extended continuously. Please ask for our special ›AluPlus‹ brochure which contains many other products!

**Neu:**  
Innenausstattung speziell für den Elektriker geeignet



**Practical:**  
Removable tool plate integrated into the lid



**Useful:**  
Trays for small parts folding up like a fan

AluPlus ToolCase		Tool cases						
		1	2	3	4	5	6	7
		AluPlus AluPlus ToolCase 18	AluPlus AluPlus ToolCase 14	AluPlus AluPlus ToolCase 18	AluPlus AluPlus ToolCase 13	AluPlus AluPlus ToolCase 16	Electrician's AluPlus ToolCase 18	Electrician's AluPlus ToolCase 22
External dimensions	mm	466 x 355 x 160	370 x 233 x 278	455 x 225 x 330	340 x 309 x 138	395 x 325 x 140	467 x 375 x 168	550 x 295 x 435
Usable dimensions	mm	440 x 310 x 135	310 x 145 x 140	420 x 195 x 145	320 x 262 x 110	370 x 280 x 85	440 x 305 x 145	470 x 220 x 345
Toolholder integrated		x	-	-	x	x	special toolholders	special toolholders
Tray for small parts		-	x	x	-	-	(see illustration)	(see illustration)
Packing unit		2	2	2	4	4	1	1
Item no./barcode		□ 420200(7)	□ 420300(4)	■ 420310(3)	□ 420250(2)	□ 420100(0)	■ 420210(6)	■ 420350(9)

\* Barcode = 4005187 + item no. without the leading "4" + control number (0)

