

Description and Handling

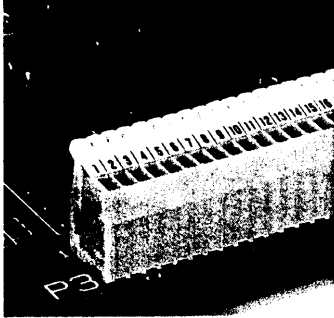
Terminal block strips with cage-clamp spring

Series 233 and 234

WAGO Front-entry

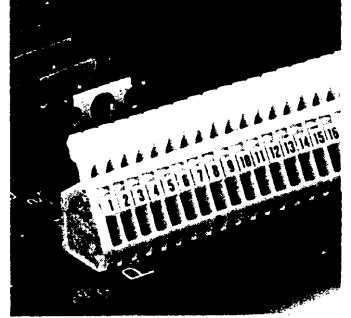
Series 234

Marking with self-adhesive marker strips

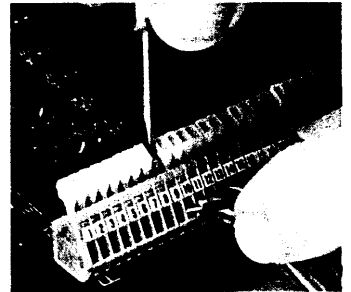
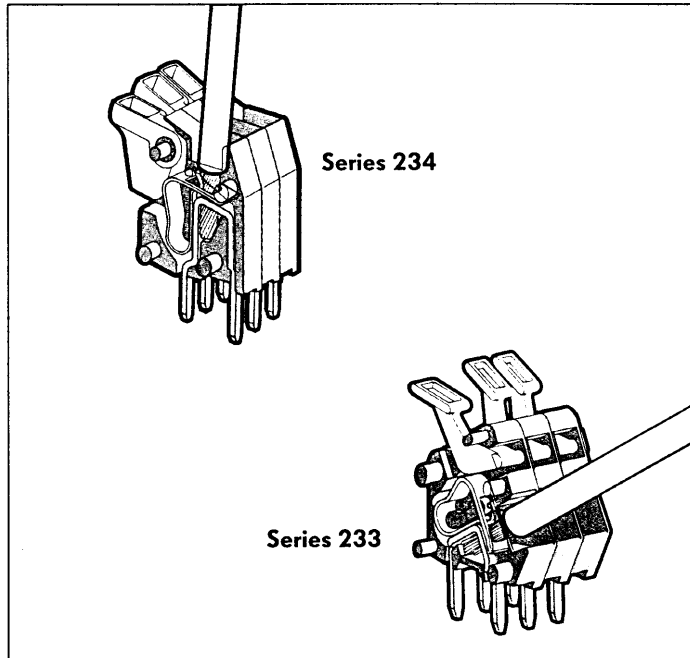


Series 233

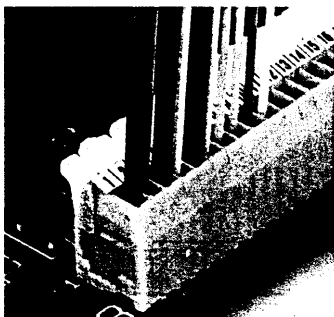
Marking with self-adhesive marker strips



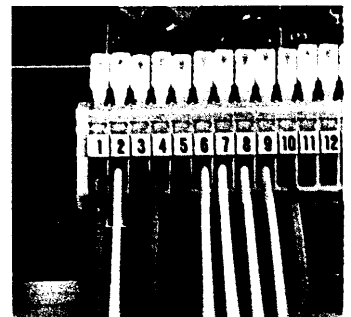
Connection/ Removal of conductors



Connection/ Removal of conductors



Nominal cross section AWG 20 (0.5 mm²),
alternate connection AWG 18 (0.75 mm²)
possible



Nominal cross section AWG 20 (0.5 mm²),
alternate connection AWG 18 (0.75 mm²)
possible

The cage-clamp spring clamps the following copper conductors:

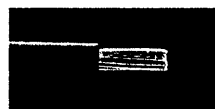
For aluminium conductors please refer to the remarks on pages 40 and 41!



solid



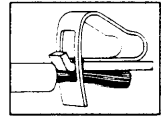
stranded*



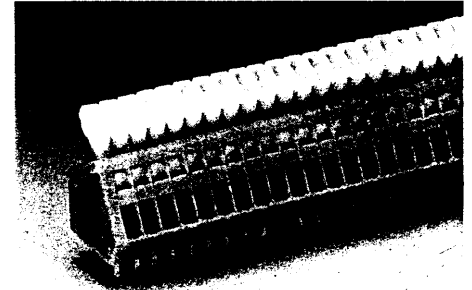
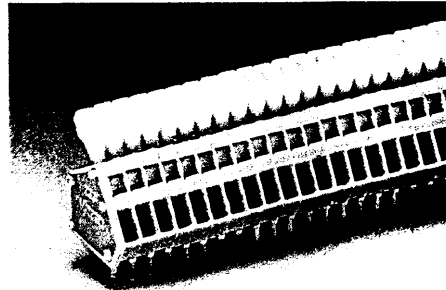
flexible*

Terminal block strips with cage-clamp spring Pitch 0-098 in (2.5 mm) and 0-1 in (2.54 mm), series 233

WAGO Front-entry



<p>Pitch 0-098 in (2.5 mm) AWG 28-20 ① 0.08 – 0.5 mm² ① 125 V, 4 A ② 125/250 V~, Gr. B/A 150 V, 4 A ② 6 A Stripped length 0-236 in (5 – 6 mm) * ② ③ ④ ⑤ ⑥ ⑦ ⑧ ⑨ ⑩ ⑪ ⑫ ⑬ ⑭ ⑮ ⑯ ⑰ ⑱ ⑲ ⑳ ㉑ ㉒ ㉓ ㉔ ㉕ ㉖ ㉗ ㉘ ㉙ ㉚ ㉛ ㉜ ㉝ ㉞ ㉟ ㊱ ㊲ ㊳ ㊴ ㊵ ㊶ ㊷ ㊸ ㊹ ㊺ ㊻ ㊼ ㊽ ㊾ ㊿</p>	<p>Pitch 0-1 in (2.54 mm) AWG 28-20 ① 0.08 – 0.5 mm² ① 125 V, 4 A ② 125/250 V~, Gr. B/A 150 V, 4 A ② 6 A Stripped length 0-236 in (5 – 6 mm) * ② ③ ④ ⑤ ⑥ ⑦ ⑧ ⑨ ⑩ ⑪ ⑫ ⑬ ⑭ ⑮ ⑯ ⑰ ⑱ ⑲ ⑳ ㉑ ㉒ ㉓ ㉔ ㉕ ㉖ ㉗ ㉘ ㉙ ㉚ ㉛ ㉜ ㉝ ㉞ ㉟ ㊱ ㊲ ㊳ ㊴ ㊵ ㊶ ㊷ ㊸ ㊹ ㊺ ㊻ ㊼ ㊽ ㊾ ㊿</p>
---	--



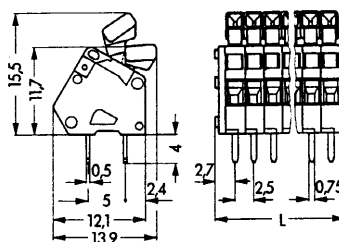
- ① Alternate connection AWG 18 (0.75 mm²) possible
- ② Any other number of poles upon request

No. of poles	Item-No.	Pack.-unit pcs.	No. of poles	Item-No.	Pack.-unit pcs.
Terminal block strips, grey, standard parts ②, 2 solder pins per pole			Terminal block strips, orange, standard parts ②, 2 solder pins per pole		
2	233-202		2	233-502	
3	233-203		3	233-503	
4	233-204		4	233-504	
6	233-206		6	233-506	
8	233-208		8	233-508	
12	233-212		12	233-512	
16	233-216		16	233-516	
24	233-224		24	233-524	
36	233-236		36	233-536	
48	233-248		48	233-548	

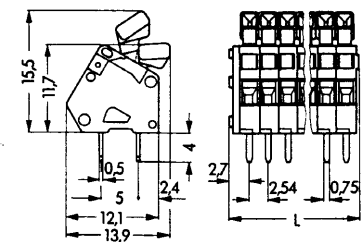
Accessories

Self-adhesive marker strips, 10 strips per card			Self-adhesive marker strips, 10 strips per card		
marking			marking		
1 – 16	233-311	1 card	1 – 16	233-321	1 card
17 – 32	233-312	1 card	17 – 32	233-322	1 card
33 – 48	233-313	1 card	33 – 48	233-323	1 card

Dimensions (in mm)



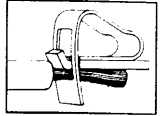
Diameter of drilled holes: 1.1^{+0.1} mm
 L = (No. of poles x 2.5 mm) + 2.3 mm



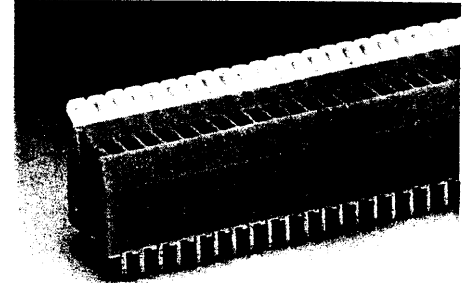
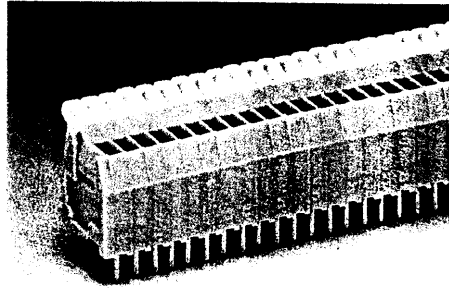
Diameter of drilled holes: 1.1^{+0.1} mm
 L = (No. of poles x 2.54 mm) + 2.3 mm

Terminal block strips with cage-clamp spring Pitch 0-098 in (2.5 mm) and 0-1 in (2,54 mm), series 234

WAGO Front-entry



	Pitch 0-098 in (2.5 mm) AWG 28-20 ① 0.08 – 0.5 mm² ① 125 V 125/250 V~, Gr. B/A 150 V 6 A Stripped length 0-236 in (5 – 6 mm) <small>* BV</small>	Pitch 0-1 in (2.54 mm) AWG 28-20 ① 0.08 – 0.5 mm² ① 125 V 125/250 V~, Gr. B/A 150 V 6 A Stripped length 0-236 in (5 – 6 mm) <small>BV</small>
--	--	---



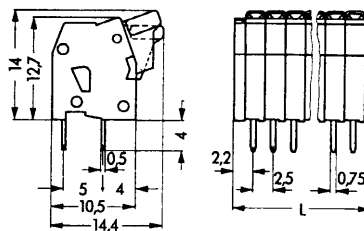
- ① Alternate connection AWG 18 (0.75 mm²) possible
- ② Any other number of poles upon request

No. of poles	Item-No.	Pack.-unit pcs.	No. of poles	Item-No.	Pack.-unit pcs.
Terminal block strips, grey, standard parts ②, 2 solder pins per pole			Terminal block strips, orange, standard parts ②, 2 solder pins per pole		
2	234-202		2	234-502	
3	234-203		3	234-503	
4	234-204		4	234-504	
6	234-206		6	234-506	
8	234-208		8	234-508	
12	234-212		12	234-512	
16	234-216		16	234-516	
24	234-224		24	234-524	
36	234-236		36	234-536	
48	234-248		48	234-548	

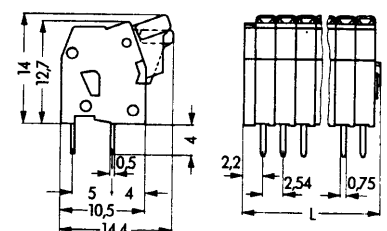
Accessories

marking	Item-No.	Pack.-unit pcs.	marking	Item-No.	Pack.-unit pcs.
Self-adhesive marker strips, 10 strips per card			Self-adhesive marker strips, 10 strips per card		
1 - 16	233-311	1 card	1 - 16	233-321	1 card
17 - 32	233-312	1 card	17 - 32	233-322	1 card
33 - 48	233-313	1 card	33 - 48	233-323	1 card

Dimensions (in mm)



Diameter of drilled holes: $1.1^{+0.1}$ mm
 $L = (\text{No. of poles} \times 2.5 \text{ mm}) + 2.2 \text{ mm}$



Diameter of drilled holes: $1.1^{+0.1}$ mm
 $L = (\text{No. of poles} \times 2.54 \text{ mm}) + 2.2 \text{ mm}$