

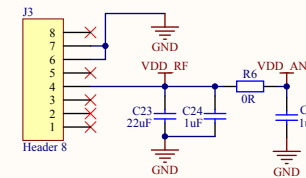
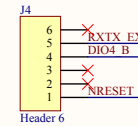
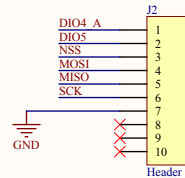
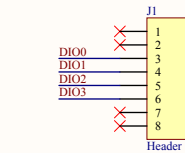
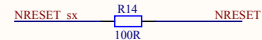
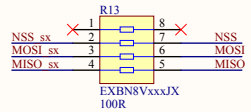
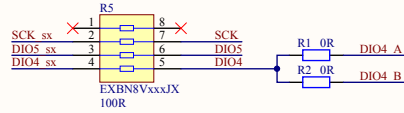
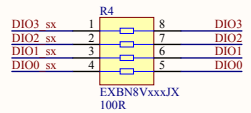
RF0\_LF: +14dBm @ 433MHz

RF Switch LF:

PA\_Boost\_HF: +20dBm @ 915MHz

RF Switch HF:

**mbed compatible connectors:**



**SX1276MB1LAS**

Title <b>SX1276 433/915MHz mbed shield</b>		
Size A3	Number <b>PCB_E31V02A - SEMTECH</b>	Revision <b>V1a</b>
Date: 17.02.2015	Sheet of 1/1	
File: K:\users\...SX1276_e31v02a_no_SAW_Sch...By:EMr	Author:EMr	