

Instrument Manager Instructions

Overview:

Instrument manager provides relevant bundled software installation instruction signal sources, which includes:

[Software Installation](#)

[Driver Installation](#)

[Instrument Manager and Instrument Connection](#)

[Virtual Panel Control Program](#)

Software Installation

Hardware Requirements

- Hardware configuration which satisfies Windows system requirements
- 1024 x 768 or higher display resolution

System Requirements

- Supports Win2000, WinXP, Win Vista, Win7, and Win8
- System which needs to be pre-installed: .Net Framework 4 Client Profile.

Other Requirement

- Original USB cable should be used to connect with the device.

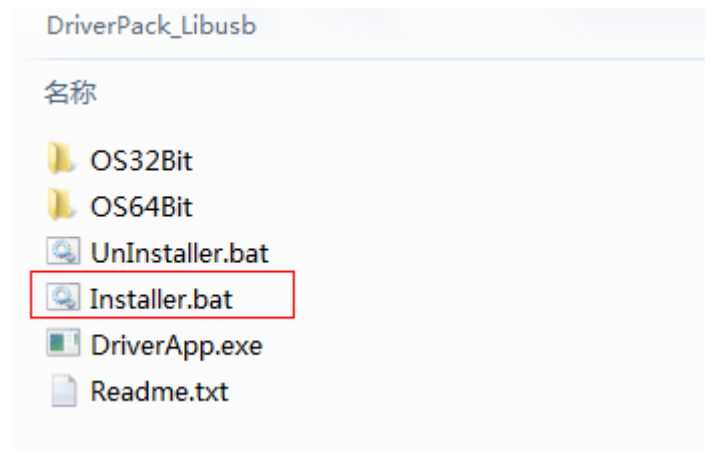
Software Installation:

- Run "[Devices Manager Installer.exe](#)" and install it step by step.

Driver Installation

USB Driver Installation:

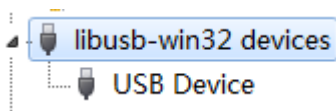
Find the driver installation: [..\DriverPack_Libusb.](#) Run **Installer.bat** to start the driver installation guide. Please follow the tip and click "next step" to install.



If any other prompt occurs through the process, click "ignore" and continue.

Successful Installation Checking Method:

1. Start device manager. The following prompt means installation is successful.



2. Unrecognized device is no longer indicated after the device is connected to computer through USB, means the device driver has been installed correctly.
3. Connection with control software also means the driver has been installed successfully.

Instrument Manager Usage and Instrument Connection

1. Find Device:

Start instrument manger and select the communication type. Click the "Find" button or right click to select the communication type name. Select "Scan" in the popup menu to find the all connected network devices.



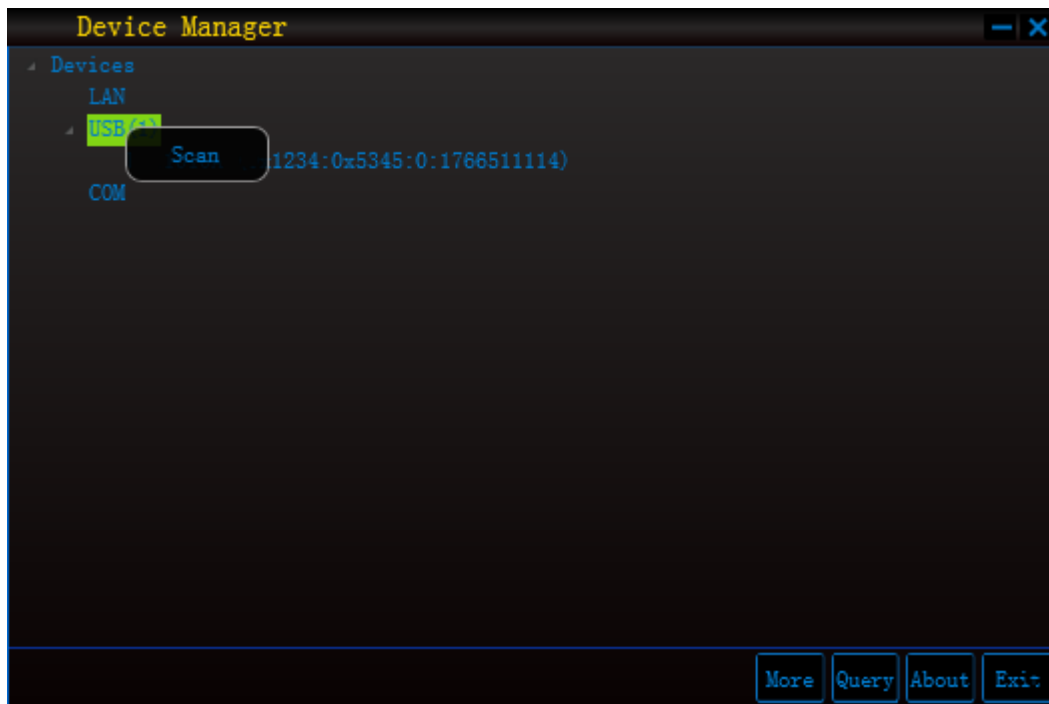
Picture 1: DP-1



Picture 2: DP-2

2. Connect Device:

For different devices, the control software and relevant bundled software will also be different. Left click to select the device, and then right click to select the software you would like to start in the popup menu.



Picture 3: DP-3



Picture 4: DP-4

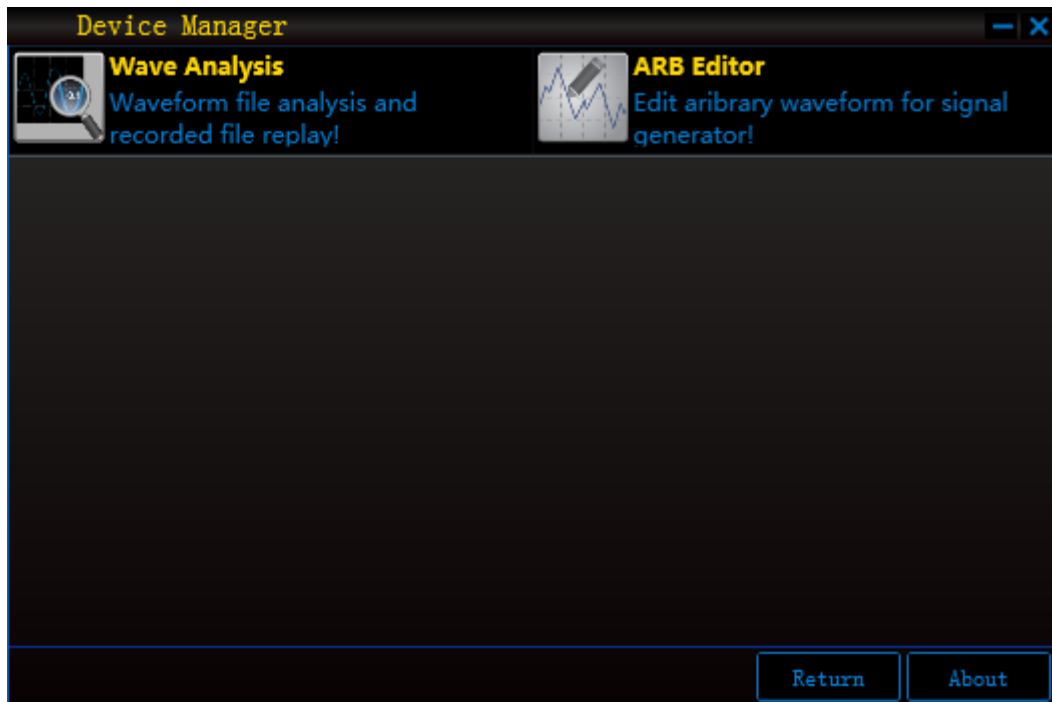
3. Start Assistant Software:

If you need to directly start other assistant software, click the “More” button to enter “Software” list.

Click to start.



Picture 5: DP-5



Picture 6: DP-6

You can also start these additional software by [Connect Device](#) method of Chapter 2.

Virtual Panel Control Program

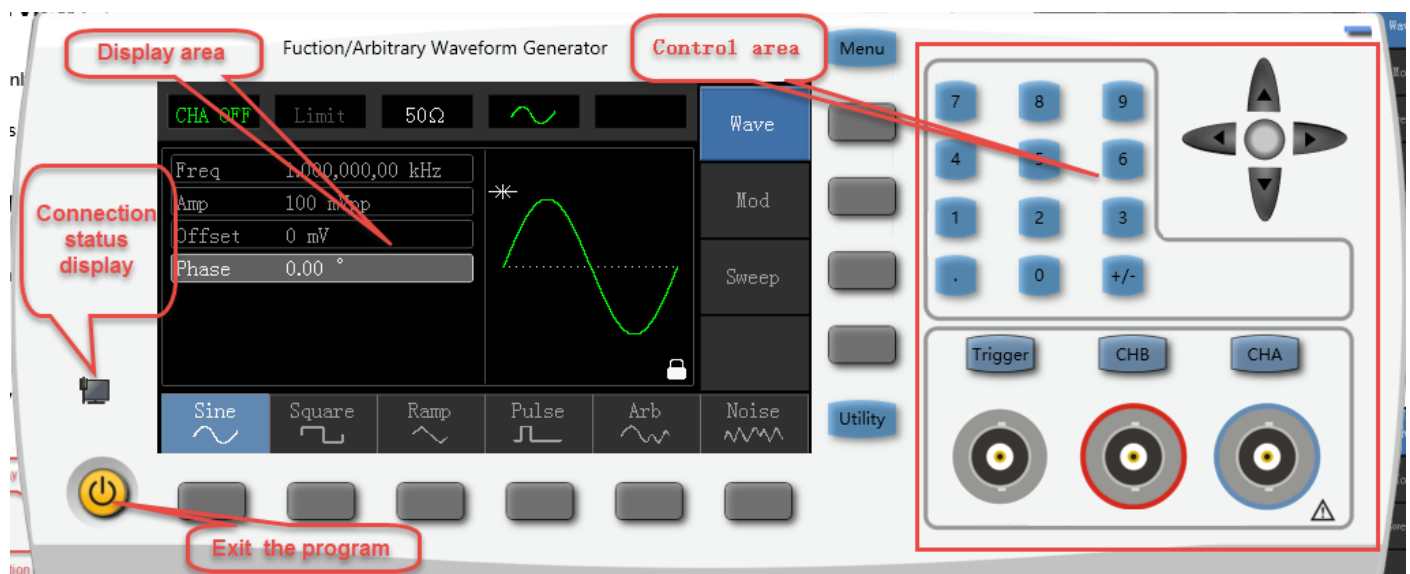
Overview:

Now only support signal source to control through virtual panel. Software interfaces of different signal sources are a little different.

Start:

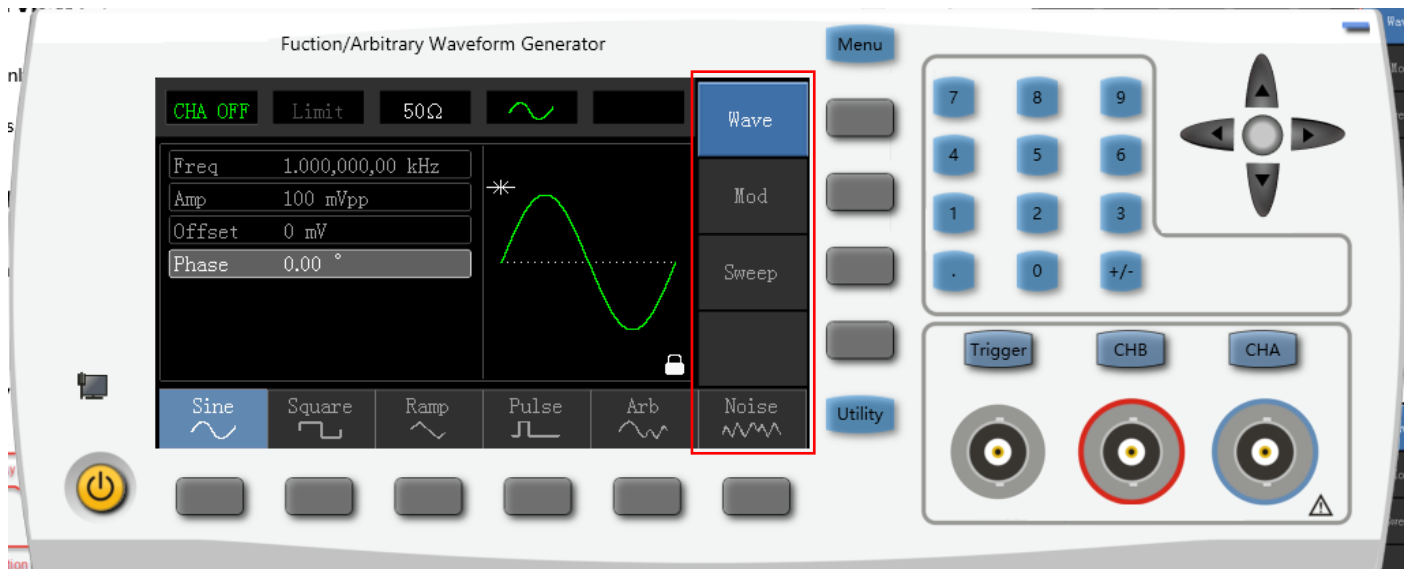
Only support to start the software through instrument manager and check: [connection device](#)

Preview:

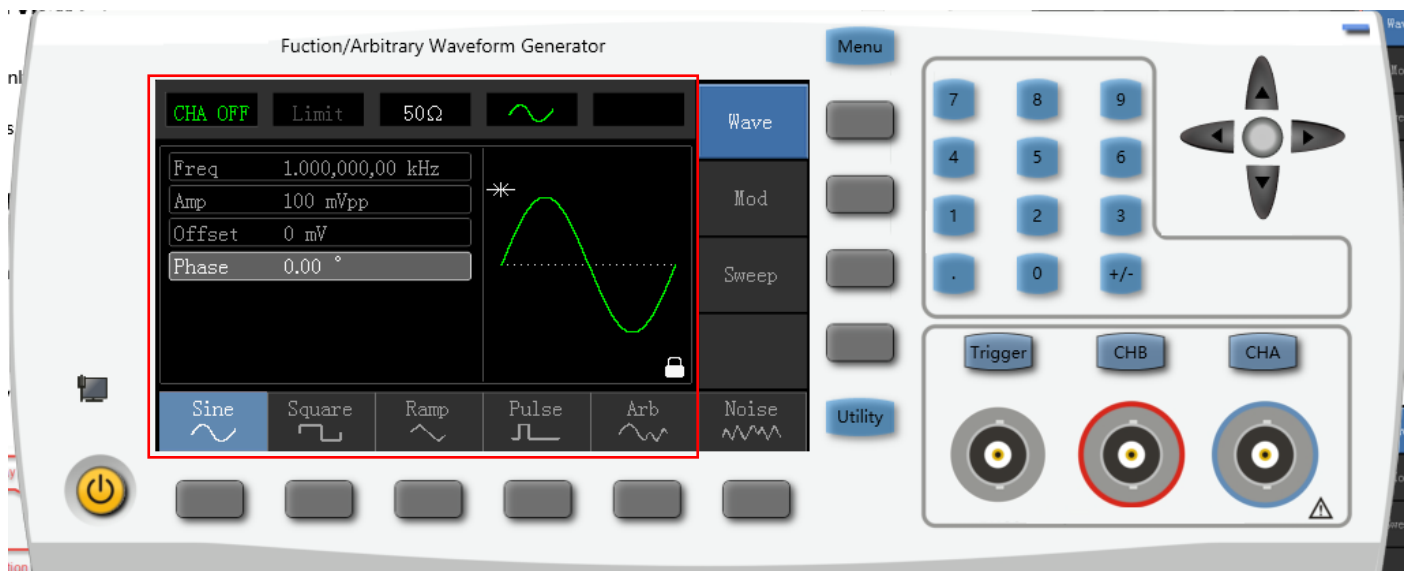


Control:

- Operate the button and model on the panel directly through mouse and keyboard shortcut key;
- Click the right menu in "screen display area" to realize quick operation as the following picture shows.



- Click the area as the following picture shows to simulate the function of Enter button.

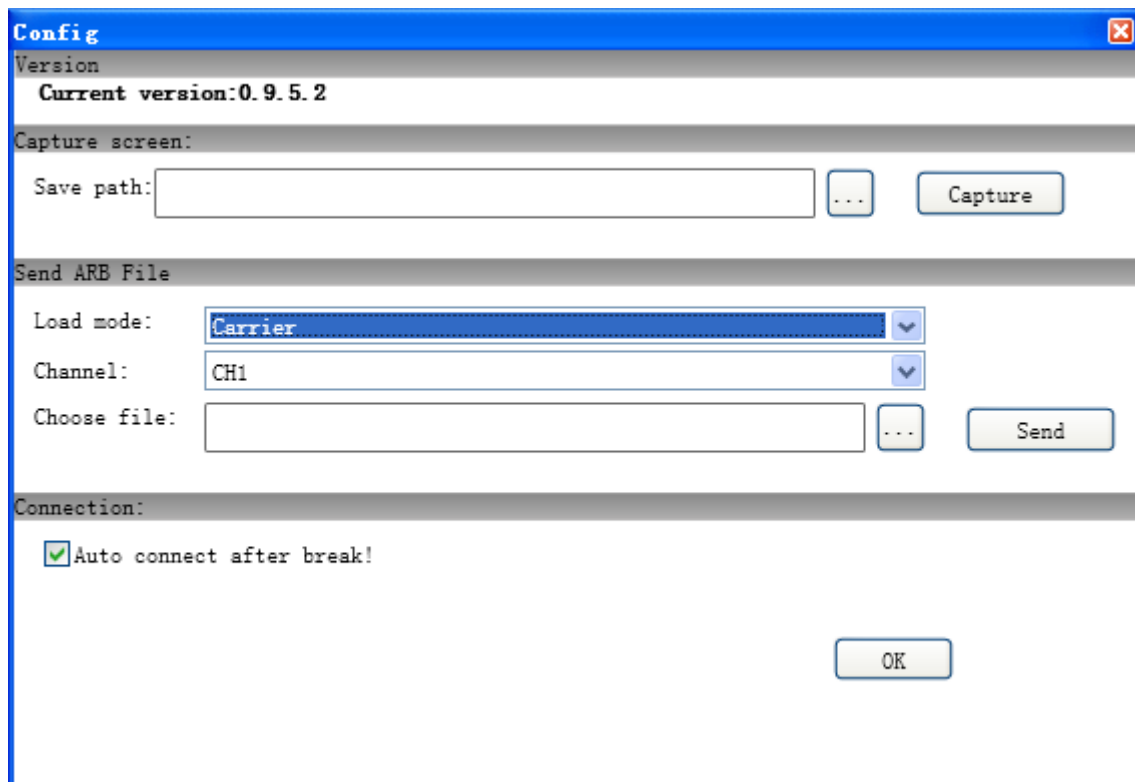


Additional Function:

Right click in any place of panel. In the popup menu select "screen shot" to quickly capture screen and save screen shot to disk. You can also select "more" to use more functions.



Configuration Interface:



Function Introduction:

- **Capture Screen Image:**

It is the image save path after capturing screen. The "screen shot" document of the right-click menu is saved in this catalogue.

- **Send Arbitrary Wave Document:**

Select the loading mode of arbitrary wave. There are two modes: carrier wave and modulated wave

Select the Channel to be Loaded;

Select the document to be loaded and click "send" button to send wave document to the device.

- **Connected to Device**

If you select the reconnection function after accidental disconnection, the connection will be rebuilt.

Copyright Statement

This user manual has not obtained the company's prior written authorization. No person or company may publish or change in any form.

Thank You!